



**SIGNATURE**  
PROPERTY LONDON

## Gillett Road, Thornton Heath

Guide Price £225,000 - £250,000

🛏 1 🚿 1 🚗 1

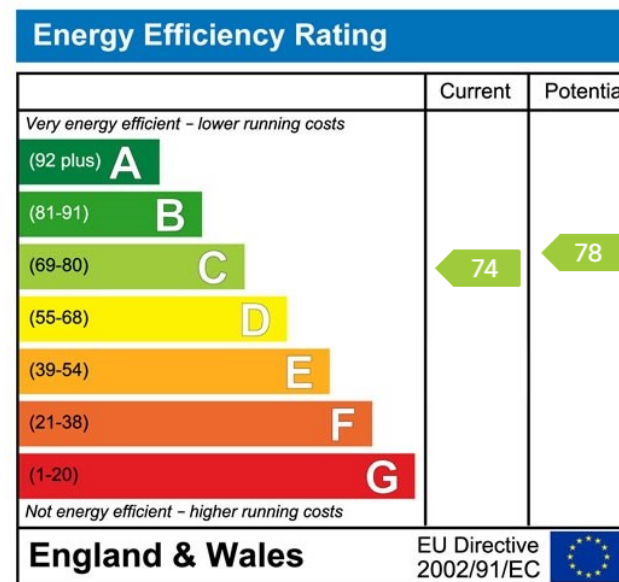
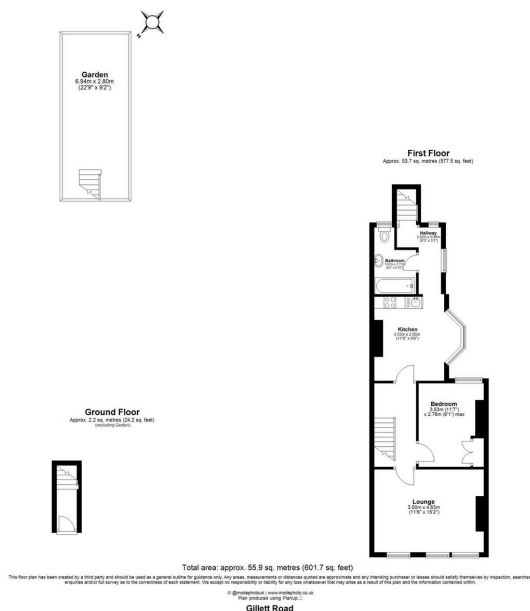


- Guide Price £225,000 – £250,000
- Excellent Buy-to-Let Investment Opportunity
- First Floor Position with Period Character
- Separate Kitchen with Bay Window & Original Parquet Flooring
- Private Rear Garden with Direct Access
- 46-Year Lease – Cash Buyers Only
- Spacious One-Bedroom Victorian Conversion Flat
- Bright Reception Room with Two Double-Glazed Windows
- Good Size Double Bedroom with Fitted Wardrobes
- Convenient Location in Thornton Heath Close to Shops & Transport



Guide Price £225,000 – £250,000. Cash buyers only. A bright and spacious one-bedroom first-floor Victorian conversion flat with private rear garden, ideally positioned on a popular residential road in Thornton Heath. The property offers a generous reception room with excellent natural light, a separate kitchen with bay window and original parquet flooring, a good-size double bedroom with fitted wardrobes, and a modern bathroom suite.

With a 46-year lease, this property is priced accordingly and presents a fantastic buy-to-let or investment opportunity. Conveniently located close to a wide range of local shops, cafés, and amenities, as well as green spaces including Grangewood Park. Excellent transport links are available via Thornton Heath railway station, providing direct access into Central London.



Signature Property London  
 Tel: 020 4597 5603  
 Mob: 07943 995 890  
 Email: progression@signaturepropertylondon.co.uk

Company No: 15953048 VAT No: 493 3280 76

