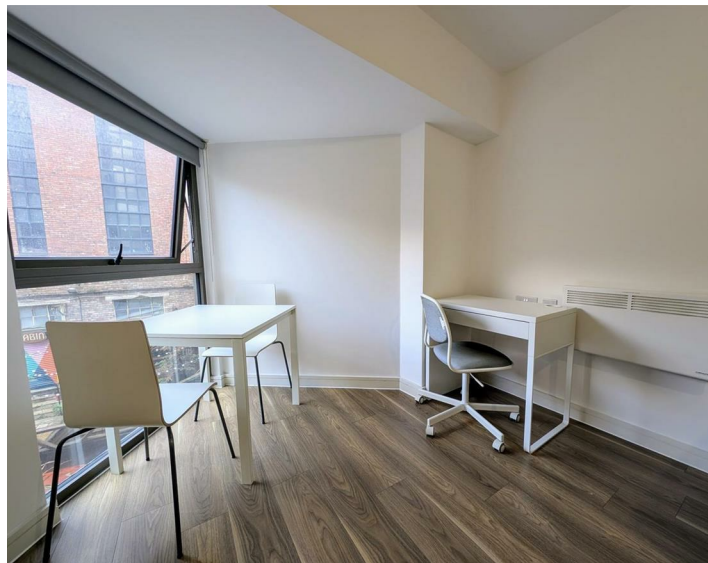




Apartment 4 2 Nation Way, Liverpool, L1 4LB  
£625 Per Month

www.  
cityresidential  
.co.uk



## About the Property

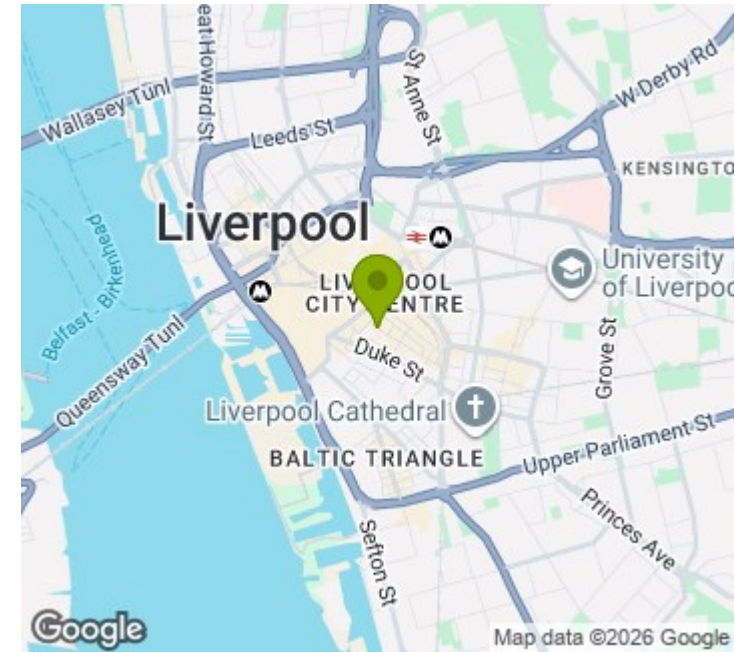
Available Now!!

This immaculate and well presented studio apartment in the heart of Liverpool City Centre. Situated in Wolstenholme Square, it is ideally located for all the amenities the city centre has to offer and is just a short walk from all transport links within the city. The accommodation further benefits from double glazing, intercom entry system and integrated white goods in the kitchen.

The development is serviced by a lift to all floors and there is no parking.

Please call us now to secure a viewing.

- Studio Apartment
- Fully Furnished
- Great Location
- EPC - B
- Council Tax Band - A
- Deposit Payable £721



## Energy Efficiency Rating

	Current	Potential
Very energy efficient - lower running costs		
(92 plus) <b>A</b>		
(81-91) <b>B</b>	<b>88</b>	<b>88</b>
(69-80) <b>C</b>		
(55-68) <b>D</b>		
(39-54) <b>E</b>		
(21-38) <b>F</b>		
(1-20) <b>G</b>		
Not energy efficient - higher running costs		
<b>England &amp; Wales</b>	EU Directive 2002/91/EC	



City Residential  
 81/87 Victoria Street, The Old Haymarket, Liverpool L1 6DG  
 T: 0151 231 6100 F: 0151 231 6105  
 E: sales@cityresidential.co.uk



WWW.  
**cityresidential**  
 .co.uk