



Lett Road, London E15

£300,000 Leasehold







Description

This one-bedroom apartment in Edge Apartments offers a practical and comfortable home in the heart of Stratford. The building provides useful facilities for residents including a communal roof garden on the fourth floor and bicycle storage, making everyday living straightforward and convenient.

Located on the third floor with lift access, the apartment includes a private balcony where you can enjoy some outdoor space. At 483 square feet, the layout makes good use of the available space with a sensible design that works well for modern living. Residents can also make use of the shared roof garden when they want some fresh air.

Just a short walk away, Stratford station delivers exceptional connectivity with the Central, Jubilee, and Elizabeth lines, London Overground, DLR, and National Rail services, placing the City, Canary Wharf, and the West End within easy reach. Westfield Stratford City and the Queen Elizabeth Olympic Park are equally accessible on foot, offering world-class shopping, dining, and leisure facilities.

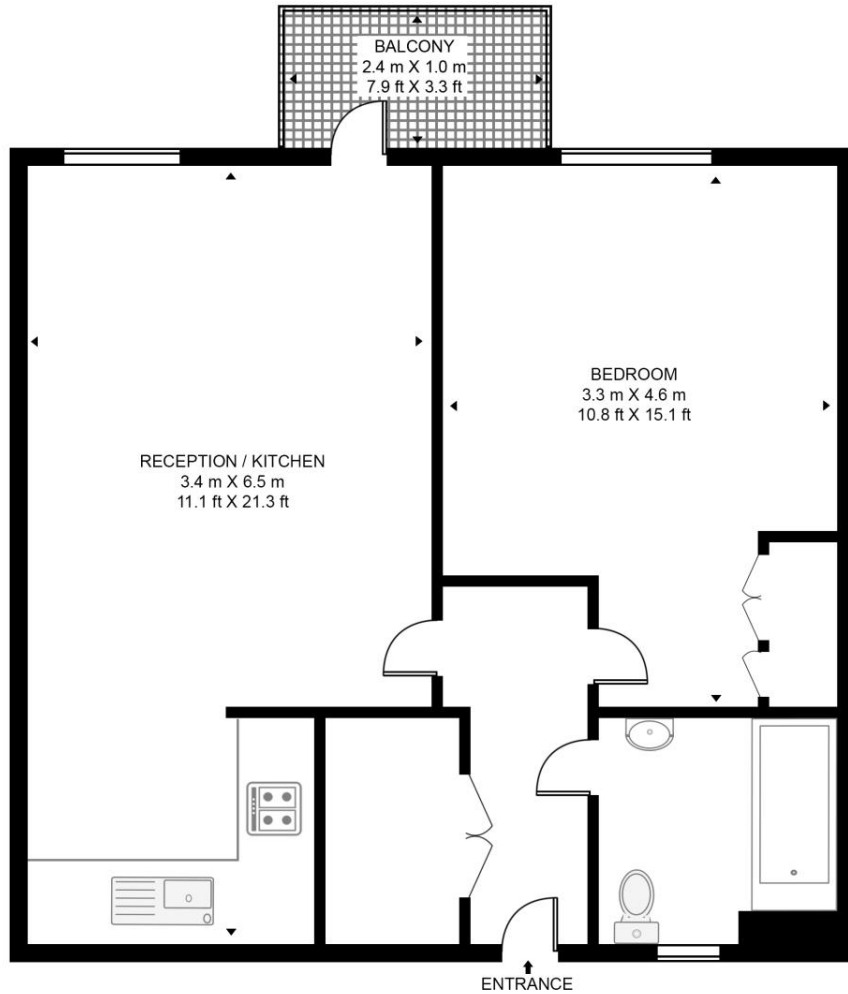
- Modern one-bedroom apartment
- 3rd Floor with lift
- Private balcony
- Communal roof garden
- Bicycle storage
- Short walk to Stratford station and Westfield
- Investment opportunity
- Approx. 483 sq. ft (44.9 sq. m)
- EPC Rating B

Floorplan

483 sq ft | 45 sq m

EDGE APARTMENTS

APPROXIMATE GROSS INTERNAL FLOOR AREA 483 SQ.FT (44.9 SQ.M)



THIRD FLOOR



HDVA

This floor plan has been defined by the RICS Code of Measurement. This floor plan and all others are for approximate representative purposes only and upon usage is agreed to as such by the client.

WWW: hdvirtualart.com | TEL: 0203.974.1567 | EMAIL: info@hdvirtualart.com

Stratford
5 Station Street,
London E15 1DA
+4420 3147 1500
Lettingsstratford@eu.jll.com

Urban living, your way.

jll.co.uk/residential

© 2019 Jones Lang LaSalle IP, Inc. All rights reserved. All information contained herein is from sources deemed reliable; however, no representation or warranty is made to the accuracy thereof.

