



25 Court Farm Road

Whitchurch, Bristol, BS14 0EH

£1,500 Per Month



PLEASE DO NOT CALL AGENT AND IF YOU WOULD LIKE TO APPLY, PLEASE EMAIL AGENT THROUGH THE PORTAL REQUESTING AN APPLICATION FORM

Nestled in the charming area of Whitchurch, Bristol, this well-presented semi-detached house at 25 Court Farm Road offers a delightful living experience. With three bedrooms, this home is perfect for a professional or retired couple, or a small family seeking comfort and convenience.

Upon entering, you will find a spacious reception room that invites natural light, creating a warm and welcoming atmosphere. The property boasts two reception rooms at the rear, providing ample space for relaxation and entertaining. The fitted kitchen is equipped with an integral dishwasher, while a utility area adds to the practicality of the home.

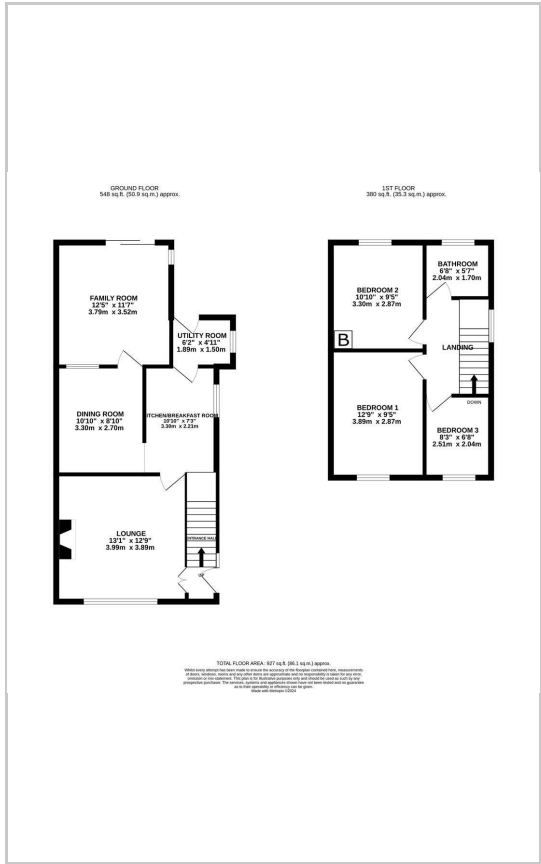
The large master bedroom features built-in storage, additionally, there is a good-sized double bedroom and a single bedroom, offering flexibility for various living arrangements. The well-appointed bathroom completes the interior, providing a comfortable space for your daily routines.



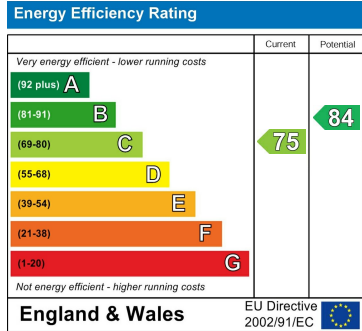
Area Map



Floor Plans



Energy Efficiency Graph



These particulars, whilst believed to be accurate are set out as a general outline only for guidance and do not constitute any part of an offer or contract. Intending purchasers should not rely on them as statements of representation of fact, but must satisfy themselves by inspection or otherwise as to their accuracy. No person in this firm's employment has the authority to make or give any representation or warranty in respect of the property.