



Mansfield Road, Glapwell CHESTERFIELD S44 5QA



welcome to

Mansfield Road, Glapwell CHESTERFIELD

****Guide Price £210,000 - £220,000**** A well presented semi-detached home with spacious lounge, kitchen/diner, conservatory, three comfortable bedrooms and modern shower-room. Externally the property offers ample off-street parking, a generous garden with summer-house and countryside views.

Entrance Porch

Double glazed exterior door opens into a welcoming entrance porch with dual aspect double glazed windows bringing in natural light. With space to remove and store coats and shoes and door to:

Entrance Hall

Central entrance hall with carpeted stairs to the first floor, radiator, laminate flooring and doors to:

Living Room

The living room feels bright and inviting with a sweeping double glazed bay window to the front elevation bathing the space in natural light and soaking in the countryside views. The focal point of the living room is a living flame effect gas fire set in a traditional surround, fitting for the age and style of property. With laminate flooring, feature picture rail and radiator.

Kitchen/Diner

The spacious kitchen diner is the perfect hub for busy family life or for those with a love of entertaining. The kitchen is fitted with a selection of wall, base and drawer units with stylish white cabinet doors, complimented with expanses of grey, granite effect counter-tops. A stainless steel sink and drainer unit sits beneath a double glazed window providing a pleasant outlook over the garden. The kitchen offers space for a suite of free-standing appliances including cooker, washing machine and american style fridge/freezer. With laminate flooring, radiator and French doors to:

Conservatory

The addition of a conservatory adds another dimension to this home, ideal for use as a formal dining area or a second sitting room from which to enjoy the garden year-round. With tiled flooring,

ceiling fan and fitted blinds and French doors to the garden.

First Floor Landing

Carpeted stairs ascend to a central landing area with double glazed window to the side elevation, loft access and doors to:

Bedroom One

A generous double bedroom with ample floor-space for free-standing furnishings to taste. With fitted carpet, radiator and double glazed window to the front elevation taking in the countryside views.

Bedroom Two

A second comfortable double, ideal for visiting guests. With fitted carpet, radiator and double glazed window to the rear.

Bedroom Three

The third bedroom is a generous single, currently utilised as a spacious home office. With fitted carpet, radiator and double glazed window to the front - also allowing it to take in the countryside views, perfect for working from home!

Shower Room

The modern shower room is well appointed with a walk in chrome and glass corner shower unit, complimentary pedestal hand-wash basin and low level WC. The shower-room is fully tiled and features a radiator and frosted double glazed window to the rear.

Outside

The property sits back from the road at the head of a private driveway providing off-street parking for several vehicles. The driveway is flanked by mature hedge boundaries fitting of the semi-rural



positioning of the property. To the rear, the property offers a substantial garden laid predominantly to lawn with a patio area for entertaining. At the head of the garden sits a substantial summer-house which is perfect for summer parties, or could be used as a home office space if required.



view this property online williamhbrown.co.uk/Property/CSF104257



welcome to

Mansfield Road, Glapwell CHESTERFIELD

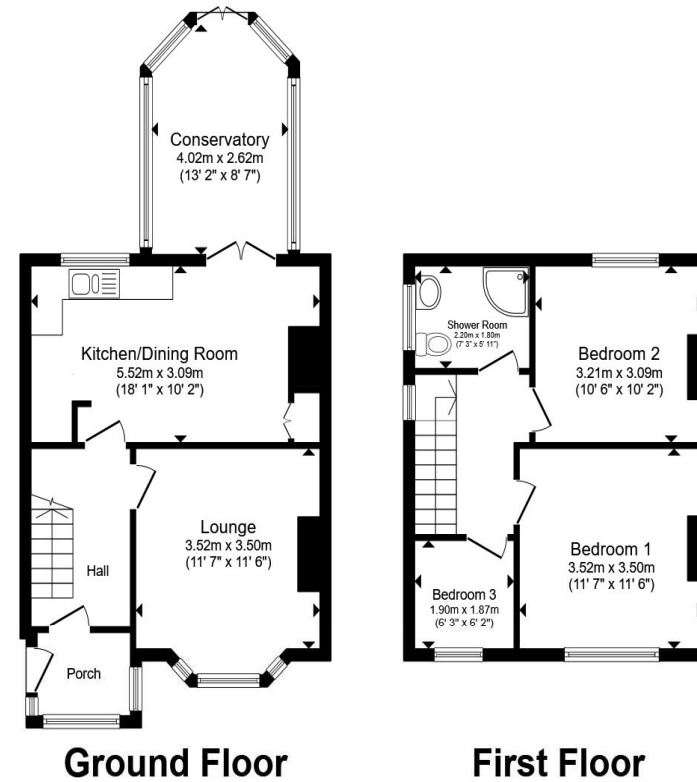
- **Guide Price £210,000 - £220,000**
- Council Tax Band B
- Well Presented Throughout
- Ample Off-Street Parking
- Generous Garden

Tenure: Freehold EPC Rating: D

Council Tax Band: B

guide price

£210,000



Total floor area 87.1 m² (937 sq.ft.) approx

This floor plan is for illustrative purposes only. It is not drawn to scale. Any measurements, floor areas (including any total floor area), openings and orientation are approximate. No details are guaranteed, they cannot be relied upon for any purpose and they do not form part of any agreement. No liability is taken for any error, omission or misstatement. A party must rely upon its own inspection(s). Powered by www.propertybox.io



[view this property online williamhbrown.co.uk/Property/CSF104257](http://williamhbrown.co.uk/Property/CSF104257)



Property Ref:
CSF104257 - 0003

1. MONEY LAUNDERING REGULATIONS Intending purchasers will be asked to produce identification documentation at a later stage and we would ask for your co-operation in order that there is no delay in agreeing the sale. 2. These particulars do not constitute part or all of an offer or contract. 3. The measurements indicated are supplied for guidance only and as such must be considered incorrect. Potential buyers are advised to recheck measurements before committing to any expense. 4. We have not tested any apparatus, equipment, fixtures or services and it is in the buyers interest to check the working condition of any appliances. 5. Where an EPC, or a Home Report (Scotland only) is held for this property, it is available for inspection at the branch by appointment. If you require a printed version of a Home Report, you will need to pay a reasonable production charge reflecting printing and other costs. 6. We are not able to offer an opinion either written or verbal on the content of these reports and this must be obtained from your legal representative. 7. Whilst we take care in preparing these reports, a buyer should ensure that his/her legal representative confirms as soon as possible all matters relating to title including the extent and boundaries of the property and other important matters before exchange of contracts.

William H Brown is a trading name of Sequence (UK) Limited which is registered in England and Wales under company number 4268443, Registered Office is Cumbria House, 16-20 Hockliffe Street, Leighton Buzzard, Bedfordshire, LU7 1GN. VAT Registration Number is 500 2481 05.

william h brown



01246 204492



chesterfield@williamhbrown.co.uk



6 Glumangate, CHESTERFIELD, Derbyshire, S40 1TP



williamhbrown.co.uk