

FERN COTTAGE, 2 BENNET HOUSE, CULROSS KY12 8JH

HARPER & STONE
ESTATE & LETTING AGENTS





FERN COTTAGE, 2 BENNET HOUSE

CULROSS, FIFE KY12 8JH

PROPERTY FEATURES

- Beautiful 18th century semi-detached cottage
- Located in the historical Royal Burgh of Culross
- Furnished
- Two bedrooms
- Well appointed kitchen and bathroom
- Generous lounge with open fire
- Beautifully presented
- All white goods included
- Available from July 2026

Harper & Stone are delighted to bring to the rental market Fern Cottage, 2 Bennet House in Culross, positioned in an enviable location just adjacent to Culross Palace in the centre of the burgh.

Entry to the property is through a solid wood front door with two glazed panels into a small entry hall. At the left is a useful storage cupboard. To the right is the main lounge, which has a beautiful feature open fireplace with black stone surround. This room boasts decorative cornicing and a press cupboard with shelving. A window to the front allows a natural flow of light.

Off the lounge is the modern kitchen including dining table. Appliances include a four-burner electric hob and oven, under counter fridge, dishwasher and microwave. A deep cupboard houses the washing machine.

Returning to the hall, up the half turn stair are two generous bedrooms. Bedroom 2 is the first on the left, with a large window to the rear and







FERN COTTAGE, 2 BENNET HOUSE

featuring twin beds. Bedroom 1 is a good sized double, and benefits from a feature open fireplace with decorative surround and a fitted wardrobe.

The family bathroom comprises a three-piece suite of bath with shower over, WC and pedestal sink as well as a towel radiator.

Early viewing recommended.

Viewings are strictly by appointment only via Harper & Stone.

Landlord Registration: FIF-1708103-25
LARN181005

No pets preferred/No HMO

Council Tax Band D

EER Band C

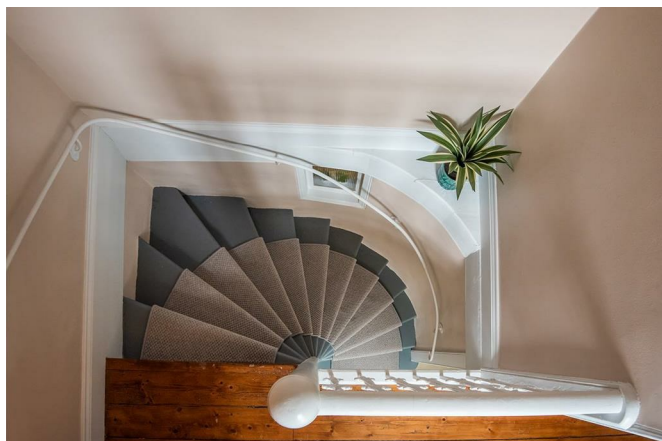
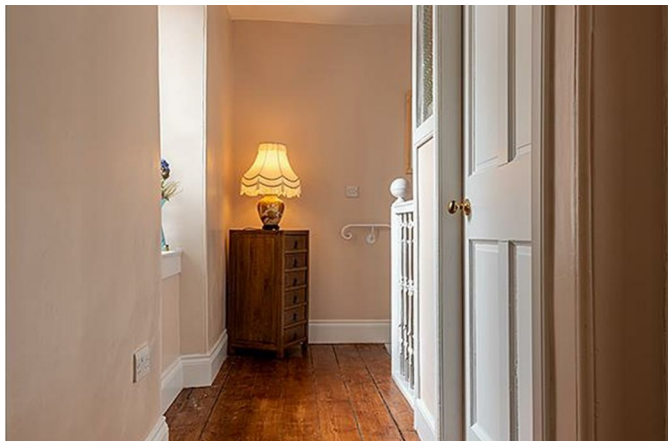
Water: Mains

Sewage: Mains

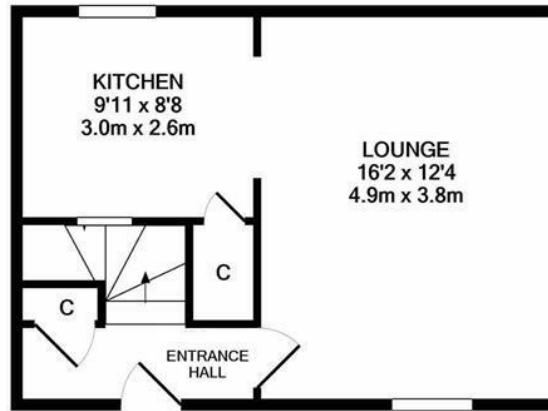
Heating: Mains

What3words

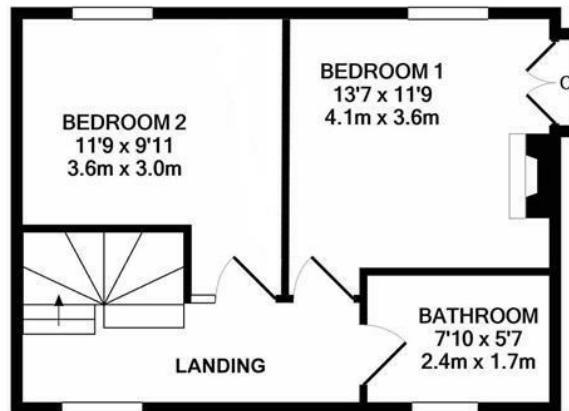
Navigation: [///waltz.meanwhile.lightbulb](https://www.what3words.com/?w3w=waltz.meanwhile.lightbulb)







GROUND FLOOR



1ST FLOOR