

# Tapestry Apartments

1 Canal Reach, N1C

£9,250 per month  
(£2,134.62 per week)

A stunning three bedroom triplex townhouse with lovely interior courtyard and additional balcony in the multi-award winning Tapestry Apartments.

Residents at Tapestry Apartments also have full advantage of amenities such as 24-hour concierge service, gym, communal roof garden, dining and entertainment suite, and residents' lounge.

**CHESTERTONS**



# Tapestry Apartments

1 Canal Reach, N1C

- Townhouse
- Three Bedrooms
- Courtyard
- Balcony
- Parking
- 24 Hour Concierge
- Residents' Lounge and Dining Room
- Residents' Fitness Suite & Roof Garden



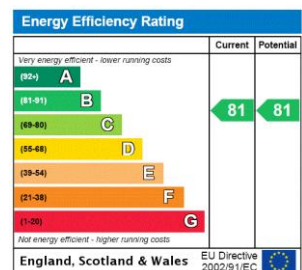
SHORT LET. A stunning three bedroom triplex townhouse with lovely interior courtyard and additional balcony in the multi-award winning Tapestry Apartments.

Residents at Tapestry Apartments also have full advantage of amenities such as 24-hour concierge service, gym, communal roof garden, dining and entertainment suite, and residents' lounge.

There is also a private parking space included.

Nearby transport links include St. Pancras International and King's Cross Station (Northern, Victoria, Hammersmith & City,

**Minimum Term:** 1 months  
**Deposit Required:** £10,673.08  
**Local Authority:**  
**Council Tax Band:** G  
**EPC Rating:** B  
**Furnished**



**Chestertons Marylebone Lettings**

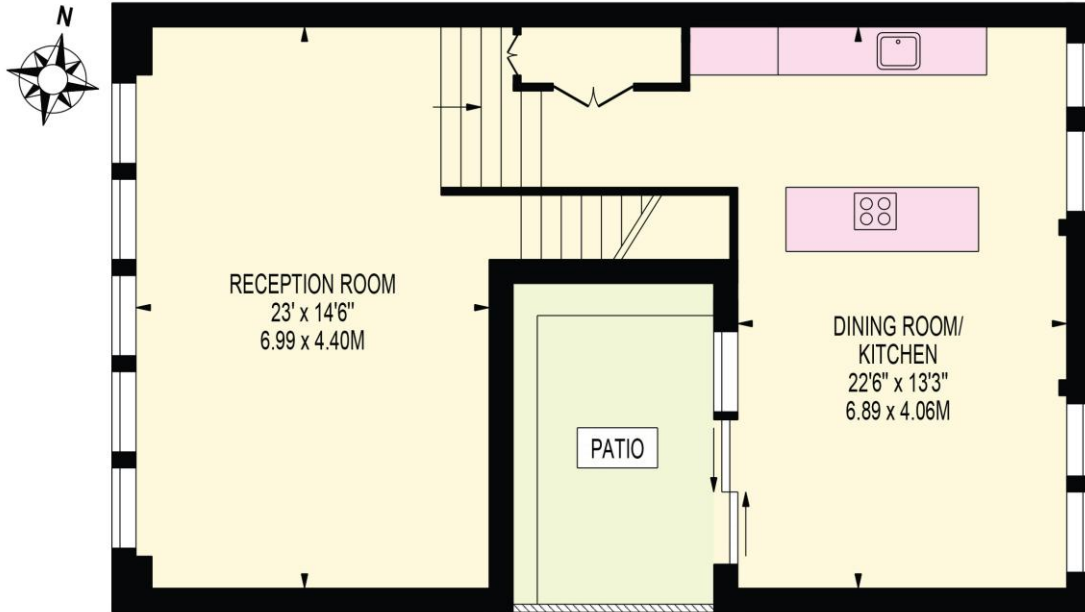
20a Paddington Street  
 London  
 W1U 5QP  
 marylebonelettingsusers@chestertons.co.uk

chestertons.co.uk

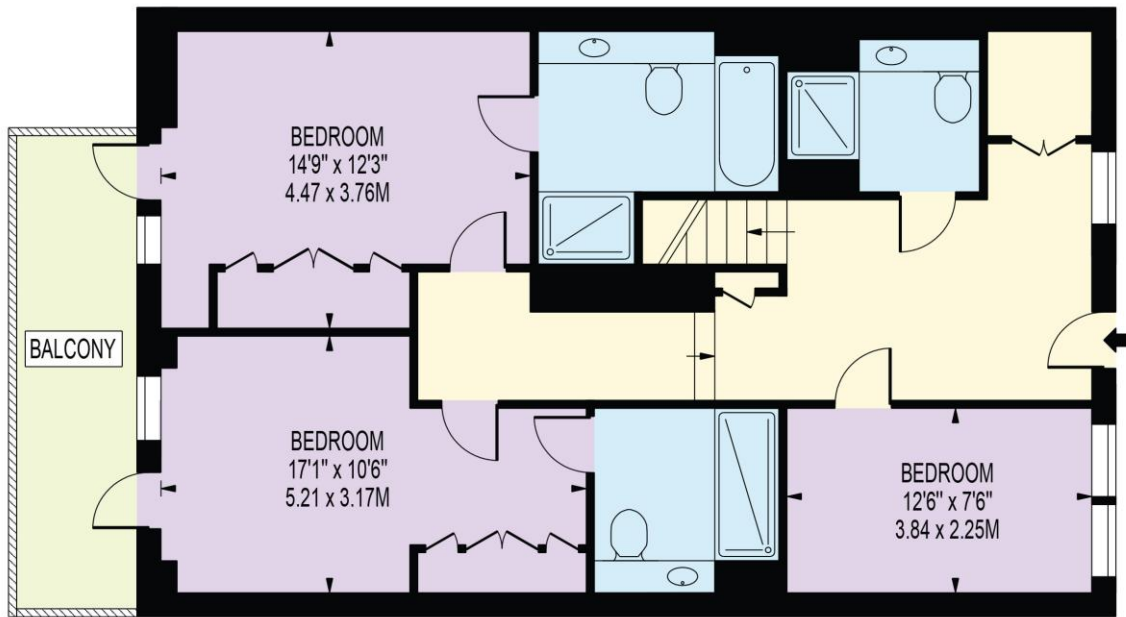
Additional tenant charges apply (fees apply to non-AST tenancies only)  
 Tenancy Agreement Fee: £300  
 References per Tenant/Guarantor: £60  
 Inventory check (approx. £100 – £250 inc. VAT)  
 chestertons.co.uk/property-to-rent/applicable-fees

# TAPESTRY APARTMENTS

APPROXIMATE GROSS INTERNAL FLOOR AREA: 1602 SQ FT - 148.83 SQ M



NINTH FLOOR



EIGHTH FLOOR

FOR ILLUSTRATION PURPOSES ONLY

THIS FLOOR PLAN SHOULD BE USED AS A GENERAL OUTLINE FOR GUIDANCE ONLY AND DOES NOT CONSTITUTE IN WHOLE OR IN PART AN OFFER OR CONTRACT. ANY INTENDING PURCHASER OR LESSEE SHOULD SATISFY THEMSELVES BY INSPECTION, SEARCHES, ENQUIRIES AND FULL SURVEY AS TO THE CORRECTNESS OF EACH STATEMENT. ANY AREAS, MEASUREMENTS OR DISTANCES QUOTED ARE APPROXIMATE AND SHOULD NOT BE USED TO VALUE A PROPERTY OR BE THE BASIS OF ANY SALE OR LET.