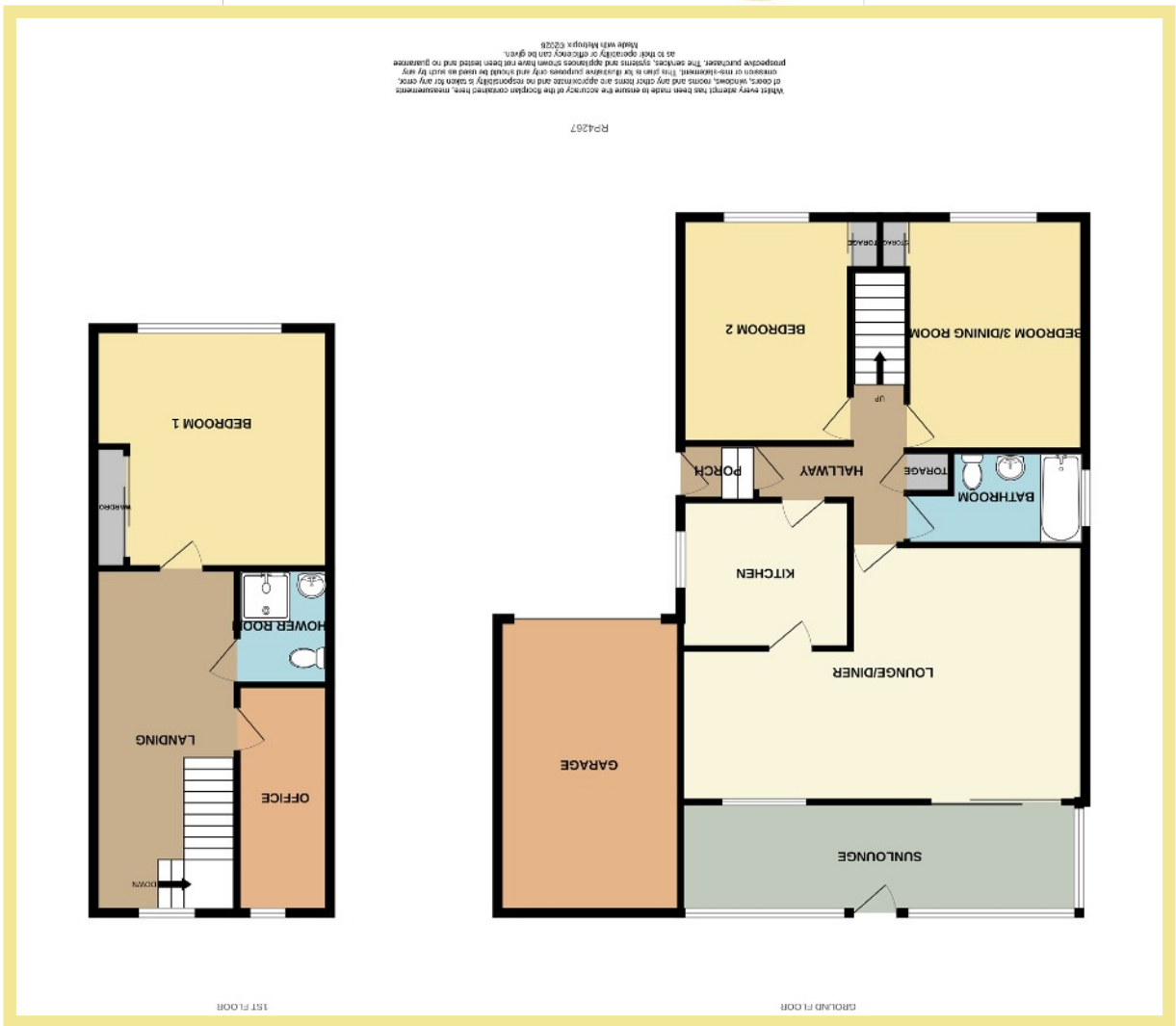


We endeavor to make our sales details accurate and reliable but they should not be relied on as statements or representations of fact and they do not constitute any part of an offer or contract. The seller does not make any representation or give any warranty in relation to the property and we have no authority to do so on behalf of the seller. Services, fittings and equipment referred to in the sales details have not been tested (unless otherwise stated) and no warranty can be given as to their condition. We strongly recommend that all the information which we provide about the property is verified by yourself or your advisers. Please contact us before viewing the property. If there is any point of particular importance to you we will be pleased to provide additional information or to make further enquiries. We will also confirm that the property remains available. This is particularly important if you are contemplating traveling some distance to view the property.

www.fletcherpoole.com



8 Dinerth Crescent
Rhos on Sea
Conwy
LL28 4HJ



THREE BEDROOM DETACHED DORMER BUNGALOW WITH FARREACHING VIEWS. SITUATED IN A QUIET, DESIRABLE RESIDENTIAL LOCATION

Description

This three bedroom detached dormer bungalow is situated in a quiet, desirable residential area. Convenient for the local shops, college & other amenities. A short drive from both Llandudno & Colwyn Bay.

Outside to the front there is ample off-road parking on the block-paved driveway, carport & garage with a small low maintenance garden area.

The rear garden is enclosed with far reaching views towards the Little Orme from the paved patio seating area and a well established area with trees, plants & shrubs.

The accommodation comprises of:- Entrance porch, hallway with built-in storage, L-shaped lounge/diner with sliding doors into the sunlounge which runs the width of the property at the rear, kitchen, 2 double bedrooms (1 currently used as a dining room) and bathroom complete the ground floor.

Stairs lead up to the first floor where there is a large bedroom enjoying the views towards the mountains, shower room and office.

Benefitting from gas central heating & UPVC double glazed windows. This property must be viewed not only to appreciate the spacious layout but also it's quiet, yet convenient location.

- ✓ THREE BEDROOM DETACHED DORMER BUNGALOW
- ✓ FAR REACHING VIEWS
- ✓ LARGE SUNLOUNGE
- ✓ AMPLE OFF-ROAD PARKING
- ✓ CARPORT & GARAGE
- ✓ ENCLOSED REAR GARDEN
- ✓ SITUATED CLOSE TO THE LOCAL SHOPS & AMENITIES
- ✓ FREEHOLD

Lounge/Diner

23' 6" x 15' 2" (7.16m x 4.62m)



Kitchen

9' 11" x 8' 8" (3.02m x 2.64m)



Sun Lounge

23' 1" x 6' 6" (7.03m x 1.99m)



Dining Room/Bedroom

13' 3" x 10' 2" (4.03m x 3.09m)

Bedroom Two

13' 3" x 9' 11" (4.03m x 3.03m)

Bathroom

9' 11" x 5' 5" (3.03m x 1.65m)

Bedroom One

14' x 13' 10" (4.27m x 4.21m)



Shower Room

6' 11" x 5' 5" (2.11m x 1.65m)

Office

13' 9" x 5' 3" (4.19m x 1.61m)

Garage

Location

Rhos on Sea is a very popular seaside resort famous for its shops and amenities. It is located between the larger resorts of Colwyn Bay and Llandudno and is also close to the A55 dual carriageway for easy access to Chester and the motorways beyond.

Directions

From the Rhos On Sea office turn left down Penrhyn Avenue, continue along past the cricket club on the left, turn left onto Church Road, proceed to the T junction turn right onto Llandudno Road, pass the church on the right, take the third left turn onto Marston Road, right onto Dinerth Avenue and first left onto Dinerth Crescent.

Council Tax Band: F (provided on www.voa.gov.uk)
Energy Performance Rating Band: TBC
Tenure: Freehold.

3 Bedroom Detached Dormer Bungalow

8 Dinerth Crescent
Rhos on Sea
Conwy
LL28 4HJ

£310,000

Reference Number:RP4266
15/4/2026

Fletcher & Poole,
1A Penrhyn Avenue, Rhos on Sea, LL28 4PS

Registered Company
Number 4687367

Valuation

Thinking of moving in the near future please do not hesitate to ask for a FREE sales valuation

Viewing

By appointment contact:

tel: 01492 549178

email: rhosonsea@fletcherpoole.com
web: www.fletcherpoole.com

