



2, Stoney Acres, Dorrington, Shrewsbury, SY5 7ED
£1,650 Per Month



2, Stoney Acres, Dorrington, Shrewsbury, SY5 7ED

£1,650 Per Month

VIRTUAL TOUR AVAILABLE: Superb, spacious new build semi detached three bedroom house finished to an exceptional standard on the edge of a new luxury holiday park development on the outskirts of Dorrington, a short distance to the south of Shrewsbury just off the A49.

Available: 23/07/26

Description

Comprising: Large living area leading to open kitchen including island, integrated appliances, dining area and double doors to rear, utility leading to separate cloakroom. Stairs to first floor landing, large master bedroom including dressing area and ensuite shower room, two further double bedrooms, bathroom including separate shower. Air source heat pump, double glazing. Blinds and curtain poles included. Secure gated parking, rear garden laid to lawn. EPC B



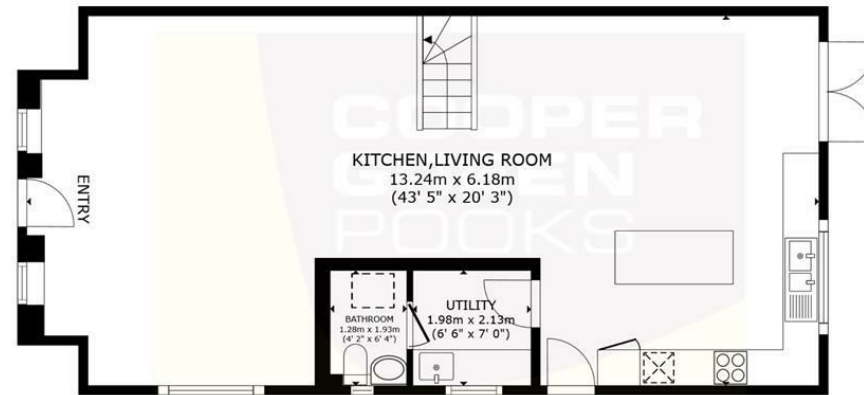
Unfurnished

Council Tax Band: New Build

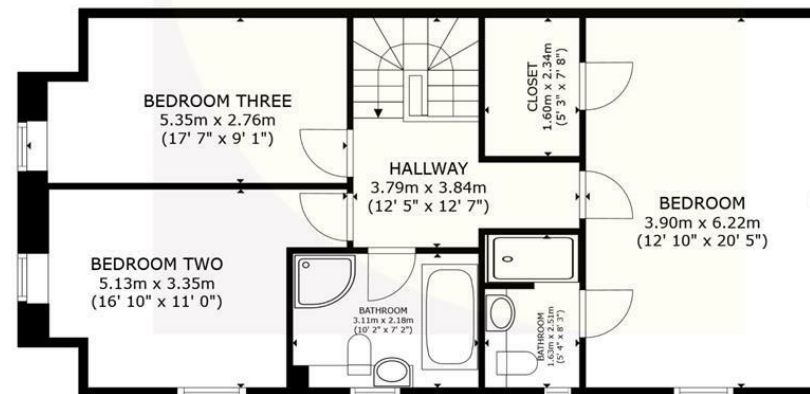
Available: 23rd July 2026

EPC: B

Floor Plans



FLOOR 1



FLOOR 2

GROSS INTERNAL AREA
FLOOR 1 79.9 m² (860 sq.ft.) FLOOR 2 79.9 m² (860 sq.ft.)
TOTAL : 159.8 m² (1,720 sq.ft.)
SIZES AND DIMENSIONS ARE APPROXIMATE, ACTUAL MAY VARY.

These particulars, whilst believed to be accurate are set out as a general outline only for guidance and do not constitute any part of an offer or contract. Intending purchasers should not rely on them as statements of representation of fact, but must satisfy themselves by inspection or otherwise as to their accuracy. No person in this firm's employment has the authority to make or give any representation or warranty in respect of the property.