



Carlton Hill, NW8

£1,850,000

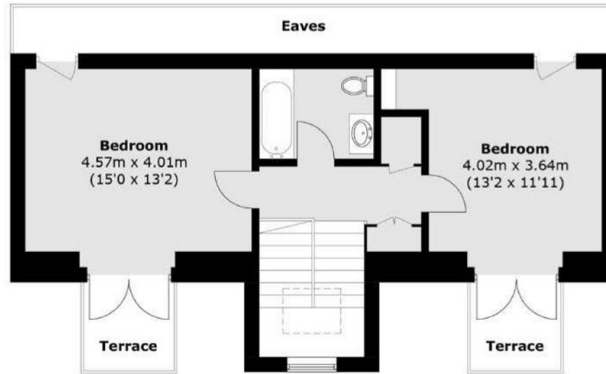
A stylish three-bedroom duplex apartment set within an elegant stucco-fronted residence. Recently refurbished, it offers bright modern interiors, a spacious reception with open-plan kitchen, and two south-facing balconies. Residents also enjoy access to a communal garden, terrace, and private parking.

Located in the heart of St John's Wood, Carlton Hill is a peaceful tree-lined street surrounded by period homes. The area offers easy access to St John's Wood High Street, Regent's Park, and Maida Vale. Excellent transport links include St John's Wood (Jubilee line) and Maida Vale (Bakerloo line) stations, both within walking distance.

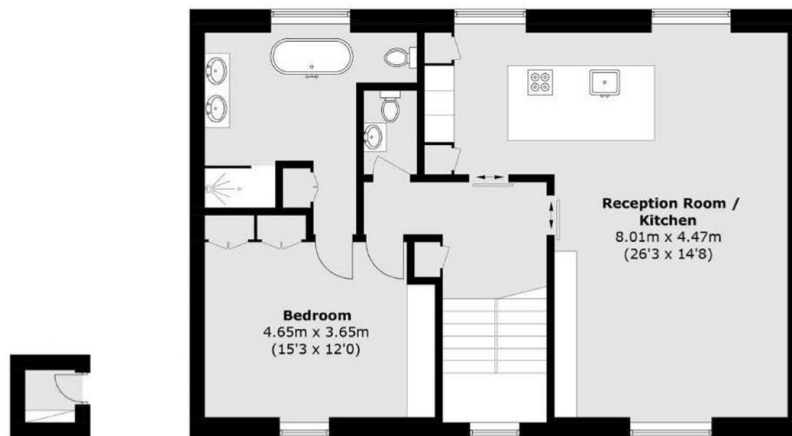
Features

- Arranged Over 1,539 Sq Ft
- Chain Free
- Three Bedrooms
- Two Balconies
- Off Street Parking
- Communal Garden

Carlton Hill, London, NW8



Third Floor



First Floor

Second Floor

Total gross area of 167.6 sq m (1,804 sq ft).

Terrace 6.5 sq m (70 sq ft).

Total area excluding reduced height area below 1.5m of 143 sq m (1,539 sq ft).