



**Crowthorne Close, SW18**

**£845,000**

**Dexters**



## Crowthorne Close, SW18

A well-presented five bedroom family home arranged over three floors, offering just under 1,200 sq. Ft of flexible living space including an integral garage, a private south-facing patio garden and off street parking. The ground floor features a bright kitchen/dining room with direct access to the garden, a separate reception room and guest WC, while the upper floors provide four bedrooms and two bathrooms, ideal for families or those working from home.

Situated on a quiet residential close in the heart of Southfields, the property is moments from the green open spaces of Wimbledon Park. The area is well known for its excellent local schools, village-style cafés, restaurants and convenient access to Wimbledon Village, Putney and Wandsworth Town.

Within easy reach of Southfields Underground station (District Line), providing excellent connections into Central London and the City. Earlsfield mainline station is also nearby for direct services to London Waterloo.

### Features

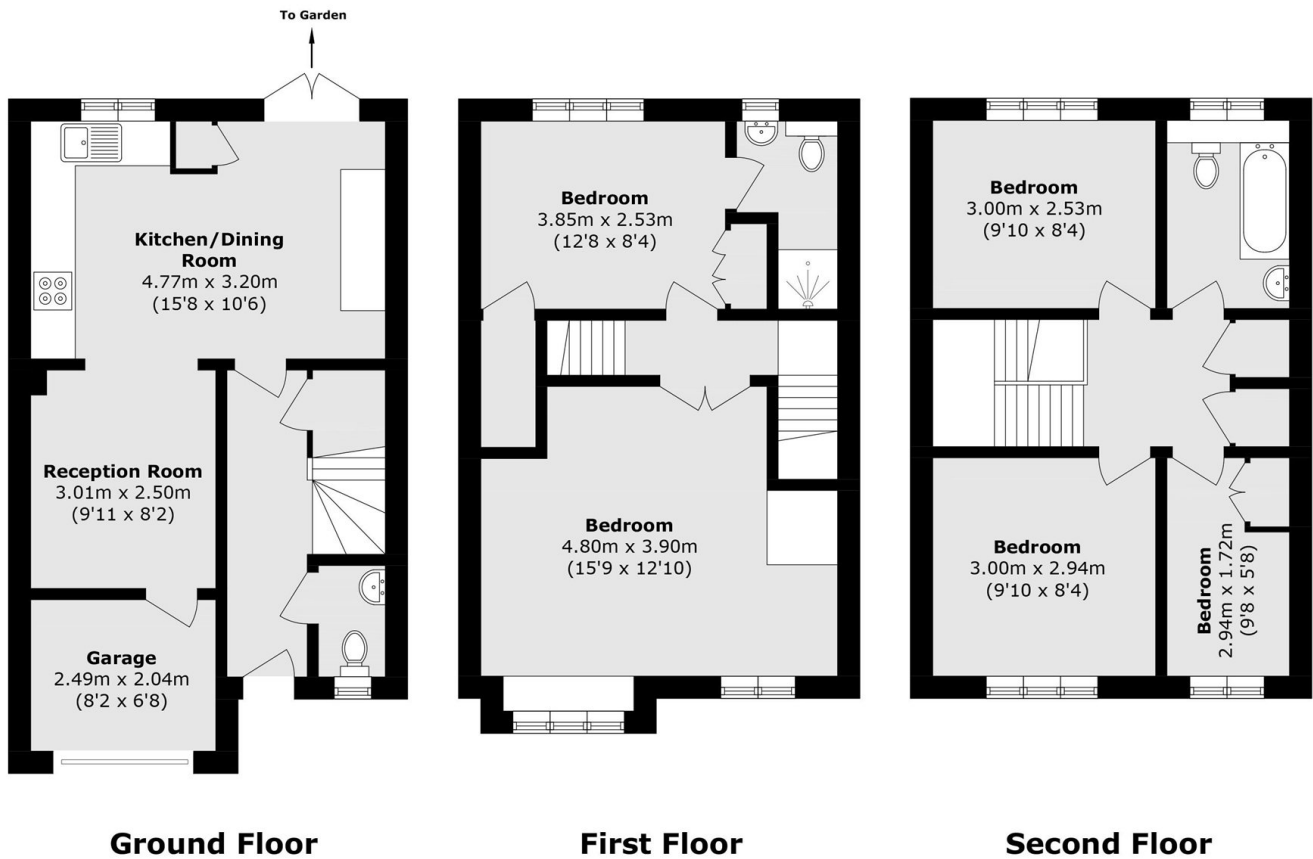
- Freehold
- 1182 sq. ft
- Five Bedrooms
- Two Bathrooms
- Off Street Parking
- Private Garden







# Crowthorne Close, London, SW18



Total area (approx.): 109.9 sq. m (1182.9 sq. ft)  
(Including Garage)