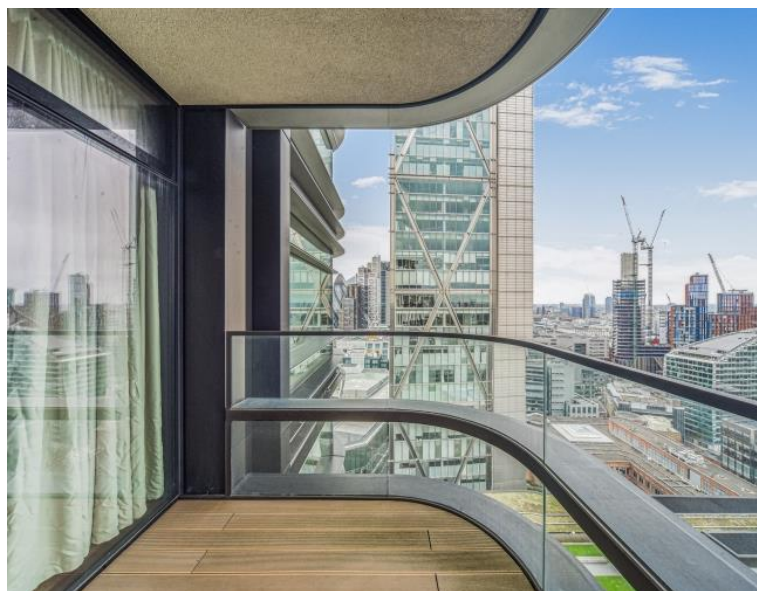


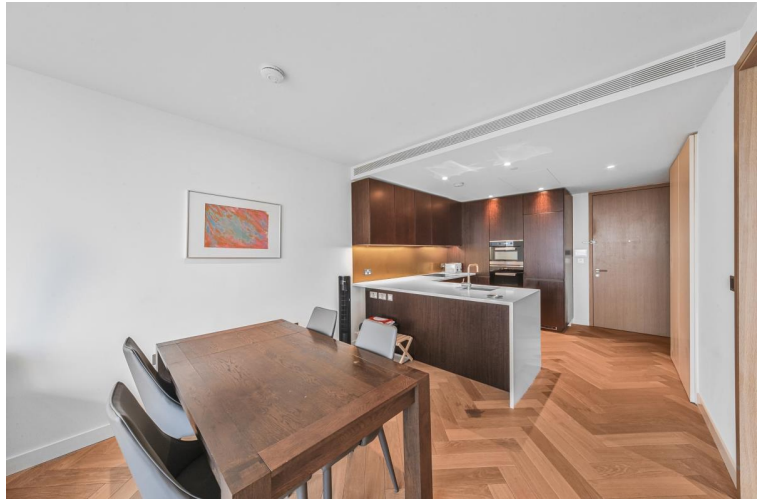
## Worship Street, London EC2A

Price £840 per week - Furnished









## Description

A rare opportunity to rent a 30th floor 1 bedroom apartment in the popular Principal Tower, EC2.

This stunning 1 bedroom apartment is offered fully furnished and boasts stunning South Western views of the City skyline. The property comprises a spacious open plan reception with fully fitted kitchen, double bedroom with fitted wardrobes, luxury Porcelain bathroom, under floor heating, large balcony, comfort cooling and heating and oak herringbone flooring. The apartment has been furnished to an exceptional standard.

Principal Tower is situated in the Shoreditch and City corridor, close to both Liverpool Street Station (0.3 miles) and Shoreditch High Street Station (0.3 miles). The development has excellent on site amenities which include a pool with Jacuzzi, spa, gymnasium, residents' lounge/bar, private cinema room and 24 hour concierge.

We understand that cooling / heating is delivered via a communal system for which separate charges apply.

Council tax band: E. Rent is payable on a monthly basis and you may be required to pay more than a month's rent in advance, depending on your circumstances. You will be required to pay a 1 week holding deposit following a successful offer. Tenancies with annual rents up to £50,000 will require a 5 weeks' security deposit, while those exceeding this threshold will require a 6 weeks' deposit. Utility bills, council tax, telephone line and broadband are not included in the rent. As well as paying the rent, you may also be required to make some additional permitted payments. If your tenancy does not qualify as an AST, additional fees may apply. Please visit [jll.co.uk/fees](http://jll.co.uk/fees) for details of fees that may be payable when renting a property. To check broadband and mobile phone coverage please visit Ofcom here [ofcom.org.uk/phones-telecoms-and-internet/advice-for-consumers/advice/ofcom-checker](http://ofcom.org.uk/phones-telecoms-and-internet/advice-for-consumers/advice/ofcom-checker)

- 1 Bedrooms
- 1 Bathrooms
- 30th floor
- Private balcony
- On-site leisure facilities including pool, spa and cinema
- 24 hour concierge
- 0.3 miles from Liverpool Street Station
- Approx 546 sq ft (50.7 sq m)
- Furnished
- EPC: B

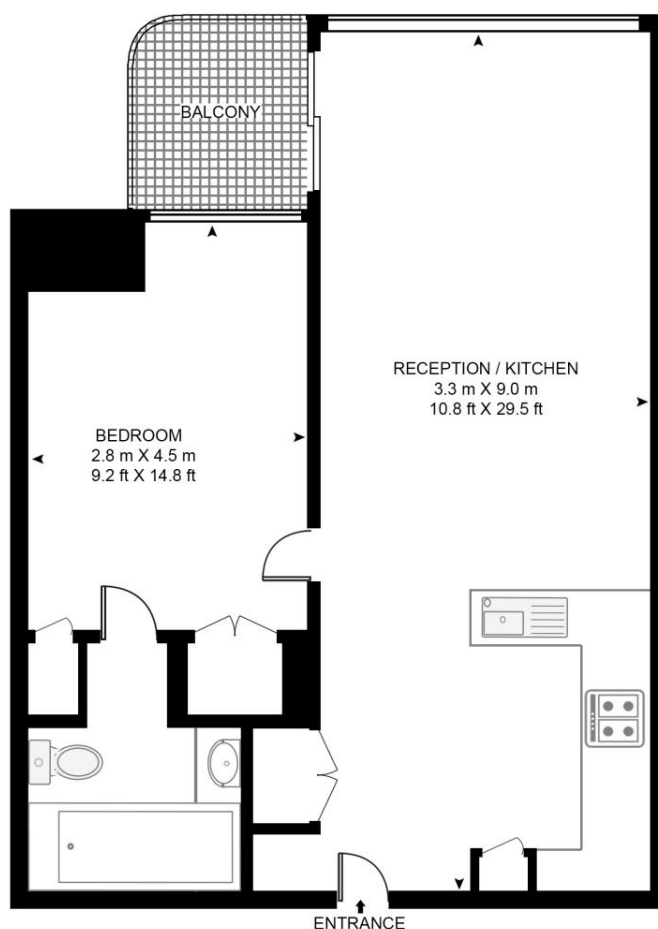


# Floorplan

546 sq ft | 51 sq m

## PRINCIPAL TOWER, PRINCIPAL PLACE

APPROXIMATE GROSS INTERNAL FLOOR AREA 546 SQ.FT (50.7 SQ.M)



## THIRTIETH FLOOR



This floor plan has been defined by the RICS Code of Measurement. This floor plan and all others are for approximate representative purposes only and upon usage is agreed to as such by the client.

WWW: [hdvirtualart.com](http://hdvirtualart.com) | TEL: 0203.974.1567 | EMAIL: [info@hdvirtualart.com](mailto:info@hdvirtualart.com)

City  
25 Walbrook The Walbrook  
Building,  
London EC4N 8AF  
+4420 7337 4000

*Urban living, your way.*

[jll.co.uk/residential](http://jll.co.uk/residential)

© 2019 Jones Lang LaSalle IP, Inc. All rights reserved. All information contained herein is from sources deemed reliable; however, no representation or warranty is made to the accuracy thereof.

