



Modern two bedroom third floor flat in the heart of Southend-on-Sea, offering spacious open-plan living, excellent storage, off-street parking and secure entry - available on a 25% shared ownership basis, making it an ideal first-time purchase.

- Two-bedroom third-floor flat in central Southend
- Bright open-plan kitchen/living space
- Modern three-piece bathroom suite
- Lift access to all floors
- Allocated Off-Street Parking
- Offered with 25% shared ownership - ideal for first-time buyers
- Two generously sized bedrooms
- Ample internal storage throughout the property
- Secure entry phone system
- Prime location close to train stations, shops and the seafront

## Victoria Avenue

Southend-on-Sea

**£60,000**

25% Shared Ownership



# Victoria Avenue



Situated on the third floor of a contemporary development, this stylish two bedroom flat provides comfortable, low-maintenance living in a prime town centre location. The property features a bright and spacious open-plan kitchen/living area, perfect for entertaining or relaxing. Two generously sized bedrooms offer excellent flexibility for sharers, couples, or those working from home. A modern three-piece bathroom and ample built-in storage throughout complete the internal layout. With lift access, a secure entry phone system, allocated off-street parking and a clean, well-maintained communal environment, this home delivers convenience and modern design in equal measure. Offered on a 25% shared ownership basis, it's an exceptional opportunity for first-time buyers to step onto the property ladder.

Ideally located in the vibrant centre of Southend-on-Sea, the flat benefits from immediate access to a wide range of amenities including shops, cafés, restaurants and entertainment venues. Both Southend Victoria and Southend Central train stations are within walking distance, providing direct connections to London, making this location ideal for commuters. The iconic seafront, leisure facilities and beautiful coastal walks are also just a short stroll away, offering a perfect balance of urban living and seaside charm.

## Two Bedroom Third Floor Flat

### Entrance Hall

### Kitchen/Living Area

24'5 x 11'1

### Dining Area

13'5 x 7'5

### Bedroom One

15'1 x 8'7

### Bedroom Two

11'7 x 10'8

### Bathroom

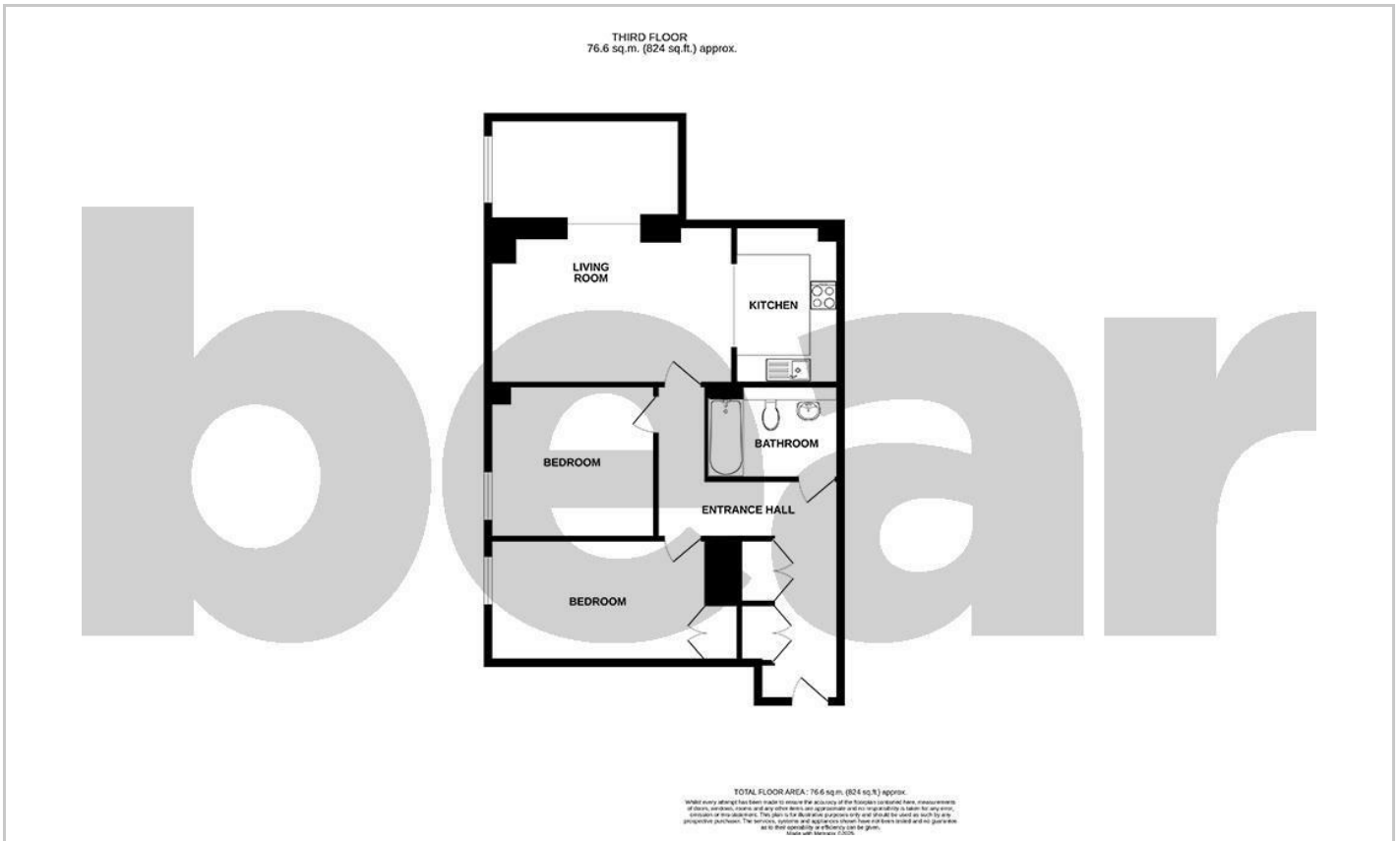
9'3 x 6'7

### Storage

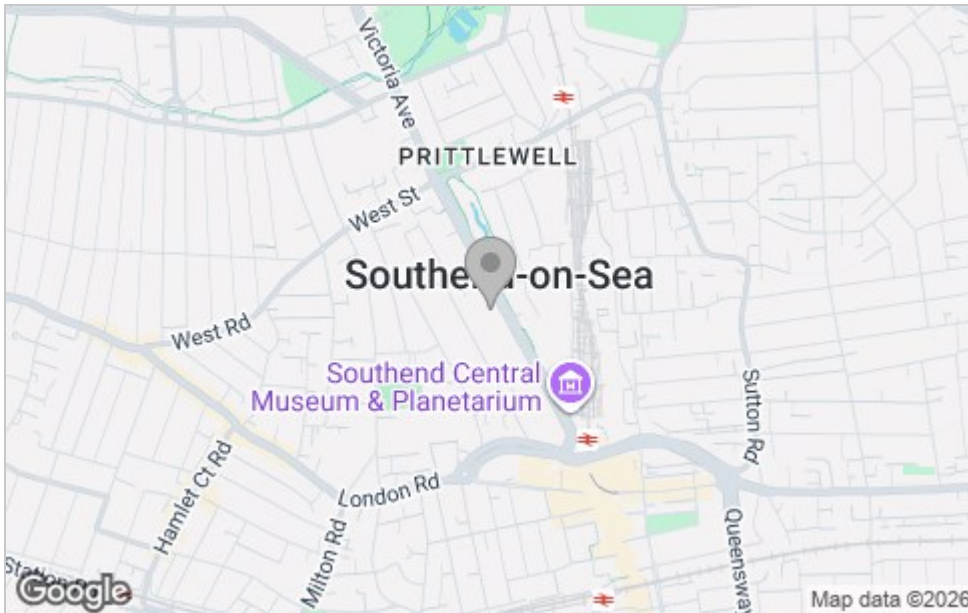
### Off-Street Parking



## Floor Plan



## Area Map



## Viewing

Please contact our Southend-on-Sea Office on 01702 811211 if you wish to arrange a viewing appointment for this property or require further information.

These particulars, whilst believed to be accurate are set out as a general outline only for guidance and do not constitute any part of an offer or contract. Intending purchasers should not rely on them as statements of representation of fact, but must satisfy themselves by inspection or otherwise as to their accuracy. No person in this firm's employment has the authority to make or give any representation or warranty in respect of the property.

204 Woodgrange Drive, Southend-on-Sea, Essex, SS1 2SJ

Office: 01702 811211 [info@bearestateagents.co.uk](mailto:info@bearestateagents.co.uk) <https://www.bearestateagents.co.uk>

## Energy Efficiency Graph

