



Price
£550,000

Freehold

4x  2x  1x 

**Kennard Crescent,
Southwater, Horsham,
West Sussex, RH13**

OVER 60?

Secure this property
for up to **59% less!**

cubitt & west
Helping you move forwards



Main features

- Large family home set over three floors
- Off road parking for 2 cars
- Cul-de-sac location
- 4 years remaining on NHBC warranty
- Picturesque location close to local shops and Southwater Country Park

Accommodation

GROUND FLOOR

Entrance Hall
 Cloakroom
 Kitchen/Diner: 16'2 x 9'1 (4.93m x 2.77m)
 Lounge : 20'11 x 16'6 (6.38m x 5.03m)
 Utility Cupboard

FIRST FLOOR

Landing
 Bedroom 1: 22'5 x 13'1 (6.84m x 3.99m)
 En-suite Shower Room
 Bedroom 4: 11'11 x 9'2 (3.63m x 2.80m)
 Family Bathroom

SECOND FLOOR

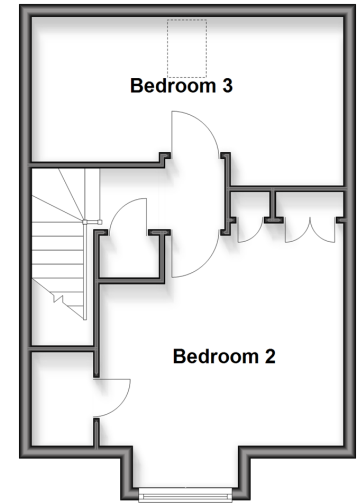
Bedroom 2: 16'7 x 7'4 (5.06m x 2.24m)
 Bedroom 3: 13'6 x 10'9 (4.12m x 3.28m)

OUTSIDE

Off Road Parking for 2 cars
 Front Garden
 Rear Garden

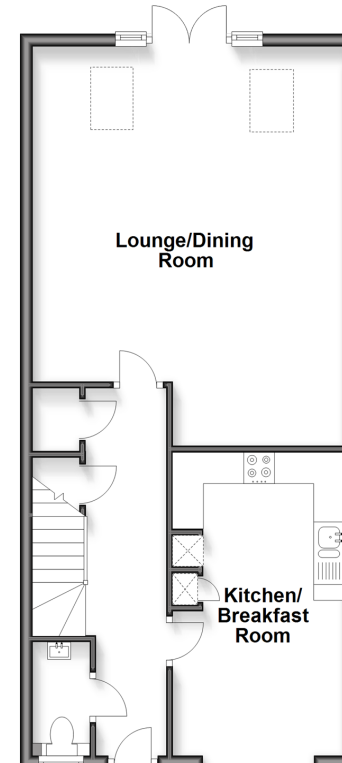
Second Floor

Approx. 35.8 sq. metres (385.6 sq. feet)



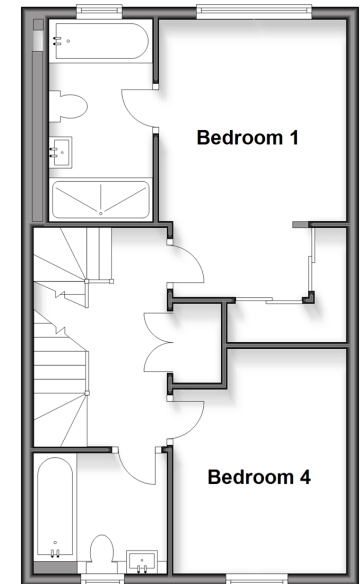
Ground Floor

Approx. 58.2 sq. metres (626.0 sq. feet)



First Floor

Approx. 44.8 sq. metres (482.5 sq. feet)



Call Southwater - 01403 731901 ■ cubittandwest.co.uk

- If buying to rent, please check if Local Authority licensing schemes apply before proceeding
- Through a Homewise Home For Life Plan people aged 60+ can secure this property for up to 59% less, by purchasing a Lifetime Lease



21909419/20260521/CR/NU