



📍 4 Albion Crescent, Corsham, Wiltshire, SN13 0DY

🔗 £2,750 PCM

An absolutely fantastic, five bedroom detached family home with single garage and ample parking situated on a popular residential development close to Corsham town centre. Available now, unfurnished, £2750pcm

- TO LET
- FANTASTIC DETACHED FAMILY HOUSE
- QUALITY PRESENTATION
- FIVE BEDROOMS
- QUIET LOCATION
- SINGLE GARAGE & AMPLE PARKING
- ENCLOSED REAR GARDEN
- COUNCIL TAX BAND F
- UNFURNISHED
- AVAILABLE NOW



🏠 EPC Rating B

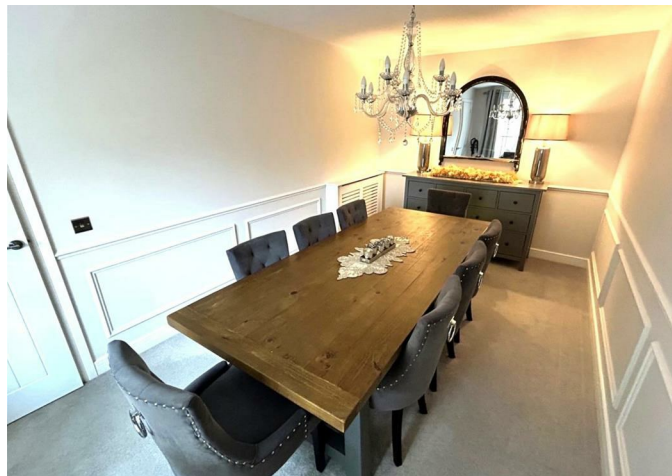


An absolutely fantastic, five bedroom detached family home with single garage and ample parking situated on a popular residential development close to Corsham town centre. Available now, unfurnished, £2750pcm

Quality accommodation comprises entrance hall with w/c. A lovely sitting room to the front with feature bay window, window seat and feature fireplace. Across the hallway from the sitting room is a formal dining room also with a feature bay window. At the rear of the property on the ground floor is a fantastic open plan kitchen/breakfast/diner with central island, breakfast bar, double oven, hob and integrated fridge/freezer washing machine and dishwasher. Just off the kitchen is a dining/family area with doors leading out to the rear garden. There is access to the rear garden from the kitchen.

Situated to the first floor are two double bedrooms, a single bedroom/dressing room/study and the family bathroom with separate shower cubicle. The main bedroom benefits from having two built in wardrobes and a lovely en-suite. To the second floor are two further double bedrooms of which one incorporates office furniture whilst also having fitted wardrobes.

Further benefits include gas fired central heating, double glazing and there is an air conditioning unit in the kitchen/breakfast room. The property occupies a quiet position with great access to the town centre and fast access to the City of Bath. The property available part furnished.





Second Floor

Bedroom 3	4.720m x 2.877m (not incl dormer)	15'5" x 9'5" (not incl dormer)
Bedroom 4	4.720m x 3.025m (not incl dormer) (max) (min)	14'9" x 9'11" (max) (min) (not incl dormer)

First Floor

Bedroom 1	4.317m x 3.530m	14'1" x 11'6"
Bedroom 2	5.000m x 2.818m (max) (max)	16'4" x 9'2" (max) (max)
Study	2.340m x 2.877m (max) (max)	7'8" x 9'5" (max) (max)



1990.5 sq ft

Ground Floor

Kitchen/Breakfast Area	3.974m x 4.943m (min)	13'0" x 16'2" (min)
Family Room	2.794m x 3.322m	9'2" x 10'10"
Living Room	4.370m x 3.322m (not incl bay)	14'4" x 10'10" (not incl bay)
Dining Room	5.191m x 2.818m (not incl bay)	17'0" x 9'2" (not incl bay)

Disclaimer These particulars, whilst believed to be accurate are set out as a general outline only for guidance and do not constitute any part of an offer or contract. Intending purchasers should not rely on them as statements of representation of fact, but must satisfy themselves by inspection or otherwise as to their accuracy. No person in this firm's employment has the authority to make or give any representation or warranty in respect of the property. All measurements and distances are approximate only. Your home is at risk if you do not keep up repayments on a mortgage or other loan secured on it.