

9 Oswald Court, Kirkcaldy

£680 pcm



One bedroom unfurnished ground floor flat in a quiet residential cul de sac. The accommodation comprises spacious lounge, kitchen with appliance, bathroom and large double bedroom. Further benefits include double glazing, recently installed fuel efficient electric heating, secure entry and residents' parking and secure entry.

Council Tax band: A

EPC Energy Efficiency Rating: D

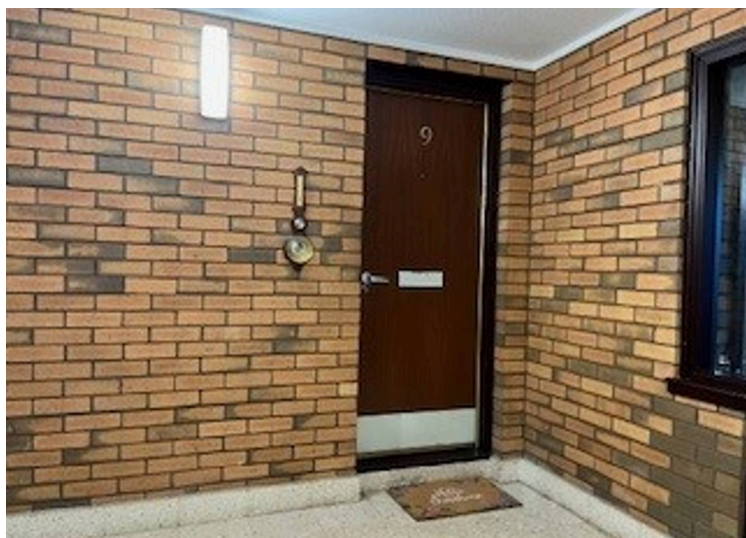
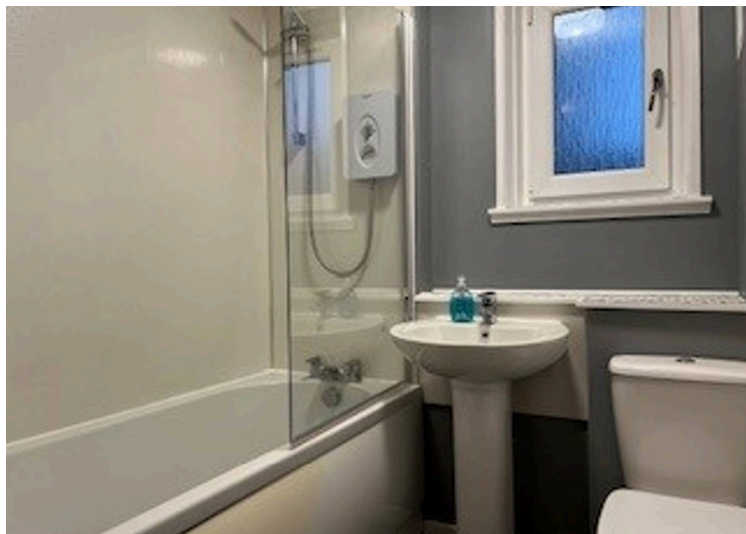
EPC Environmental Impact Rating: F

Spacious Lounge

Kitchen with white goods

Large Double Bedroom

Bathroom with shower



You can include any text here. The text can be modified upon generating your brochure.