



Coventry Road, E1

£375,000

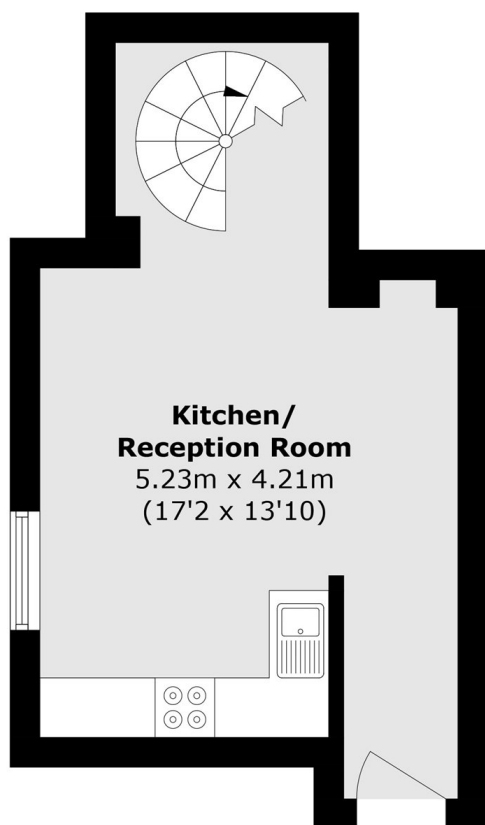
A one bedroom apartment in this sought after church conversion. The property has a large open plan living room with ample space to dine and a fully integrated kitchen. The first floor, reached via the spiral staircase, consists of a large bedroom with in-built storage and the bathroom. The property comes with a share of freehold and a secure entry system.

Steeple Court is set within a sought after location nestled between Bethnal Green (Overground and Central Lines) and Whitechapel (District, Hammersmith & City, Overground and Elizabeth lines) stations for swift commute around the City and beyond. Plenty of amenities are available nearby including bars, restaurants and shopping venues whilst the green spaces of Weavers Fields and Bethnal Green gardens are reachable on foot.

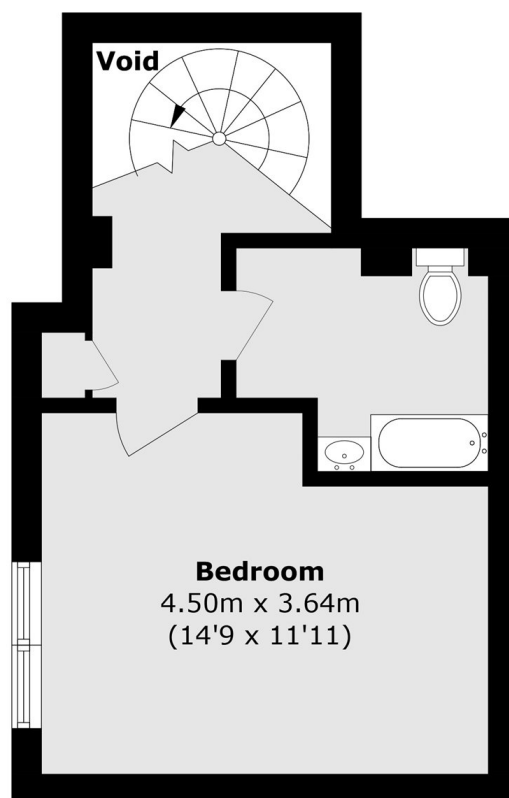
Features

- One Double Bedroom
- Church Conversion
- Share of Freehold
- Feature Spiral Staircase
- Large Bedroom
- Sought After Location

Coventry Road, London, E1



Ground Floor



First Floor

Total area (approx.): 50.6 sq. m (544.6 sq. ft)
(Excluding Void)