



Finland Street, SE16

£400,000

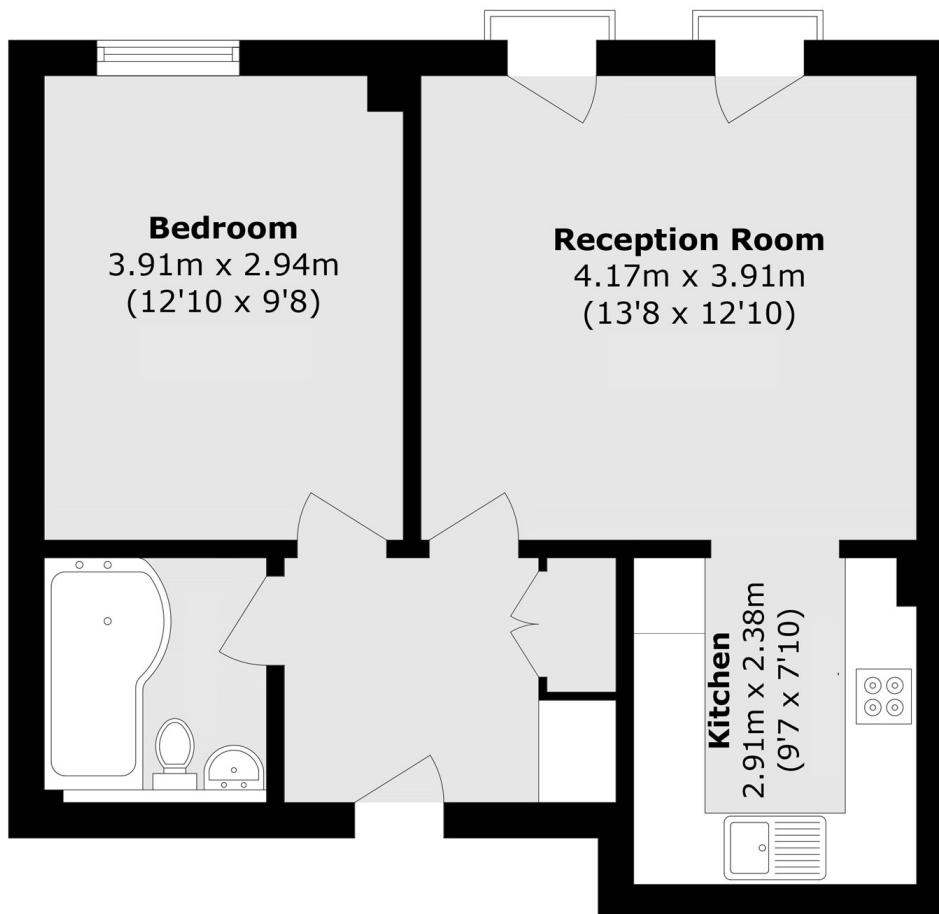
Located moments from the water, this one double bedroom flat is immaculately presented and has a spacious open plan kitchen/ living area, modern bathroom, Juliette balcony and secure allocated parking.

Located only 0.6 miles from Surrey Quays station and 0.8 miles from Canada Water station, Finland Street is surrounded by shops, cafés and riverside restaurants and pubs and is situated alongside Greenland dock and Russia Docks woodland.

Features

- One Double Bedroom
- Excellent Location
- Chain Free
- Secure Allocated Parking
- Juliette Balcony
- Fantastic Condition

Finland Street, London, SE16



Total area (approx.): 46.5 sq. m (500.5 sq. ft)