



Lowfield Road, W3

£670 Per week

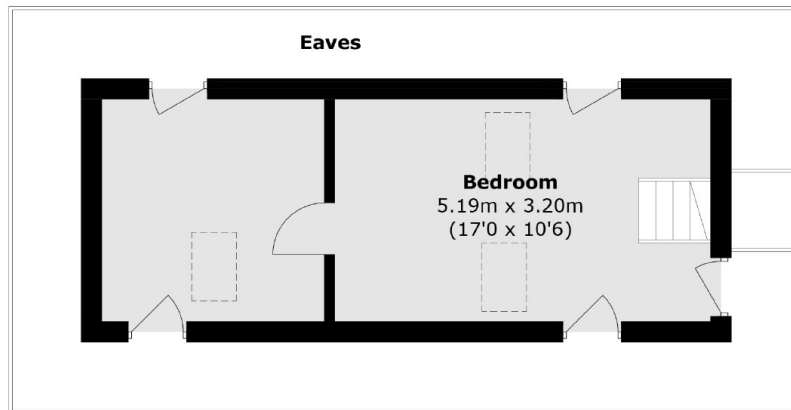
A large four double bedroom bungalow with two bathrooms, a large reception room, private rear garden and off street parking for multiple cars. This property is ideal for professional sharers, students or a family.

Lowfield Road is a short walk away from North Acton Tube Station and Acton Main Line (Elizabeth Line) and overlooks the North Acton playing fields.

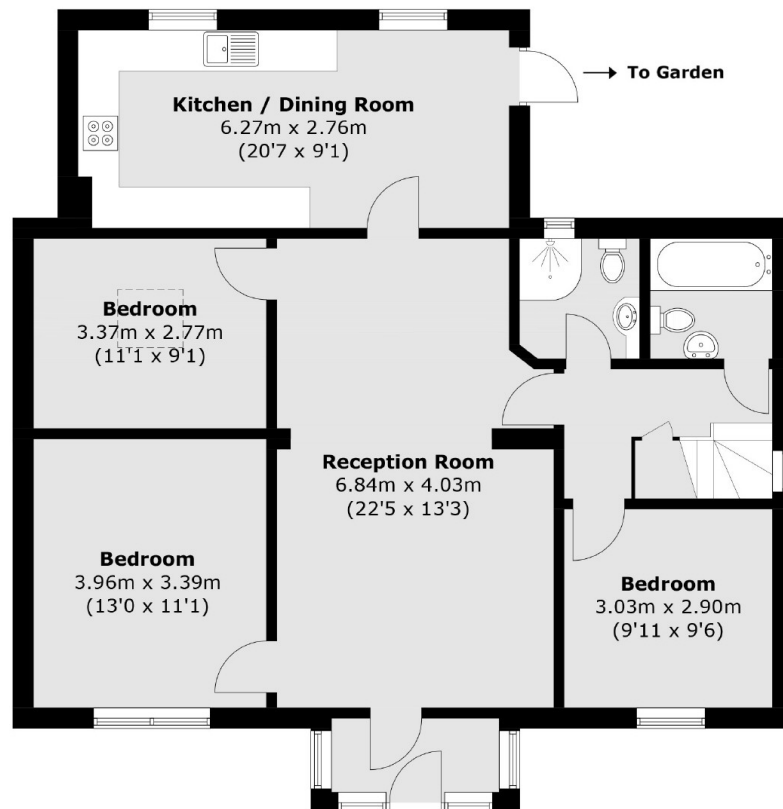
Features

- Four Double Bedrooms
- Two Bathrooms
- Off Street Parking
- Large Reception Room
- Private Garden
- Ample Storage Space

Lowfield Road,
London, W3



First Floor



Ground Floor

Total area (approx.): 125.1 sq. m (1,346.6 sq. ft)
(Excluding Eaves)