



9, Grosvenor Walk, Hertford  
SG14 2PQ  
Guide Price £365,000



[stevenoates.com](http://stevenoates.com)



## 9 Grosvenor Walk, Hertford, Herts, SG14 2PQ

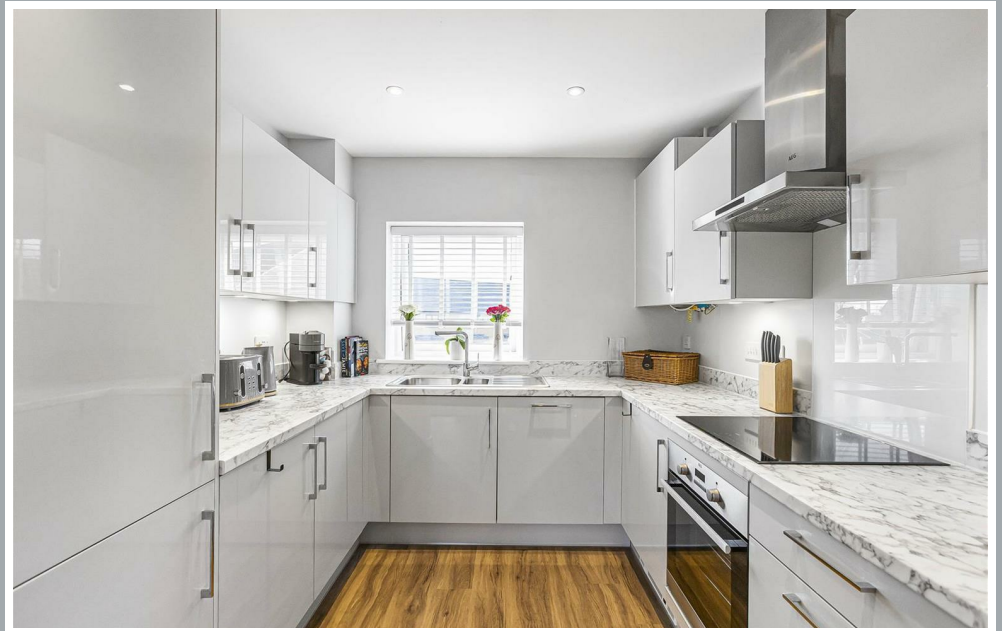
**\*\*Chain Free\*\*** A spacious and beautifully appointed two-bedroom top-floor apartment, situated within the highly sought-after Croudace Homes development, Blakemore Manor. Built in 2024 and offered to the market with no onward chain, this modern apartment provides approximately 914 sq ft of well-designed accommodation. The property comprises a generous entrance hallway, an impressive 18' lounge opening into a contemporary fully fitted kitchen with integrated appliances, two double bedrooms including a principal bedroom with its own en-suite shower room and a family bathroom.

Externally, the apartment benefits from allocated parking for two vehicles, well-maintained communal gardens, access to a loft space, and a valid NHBC certificate, offering additional peace of mind.

The popular Blakesware Manor development is located on the western outskirts of Hertford offering convenient access to Hertford North mainline station which provides services to London's Moorgate and Kings Cross. The development is only a short distance from Panshanger Park which offers excellent dog walks and trails, whilst the quaint village of Hertingfordbury is also a short stroll away which includes the popular White Horse village pub.



70 Fore Street, Hertford, Hertfordshire, SG14 1BY



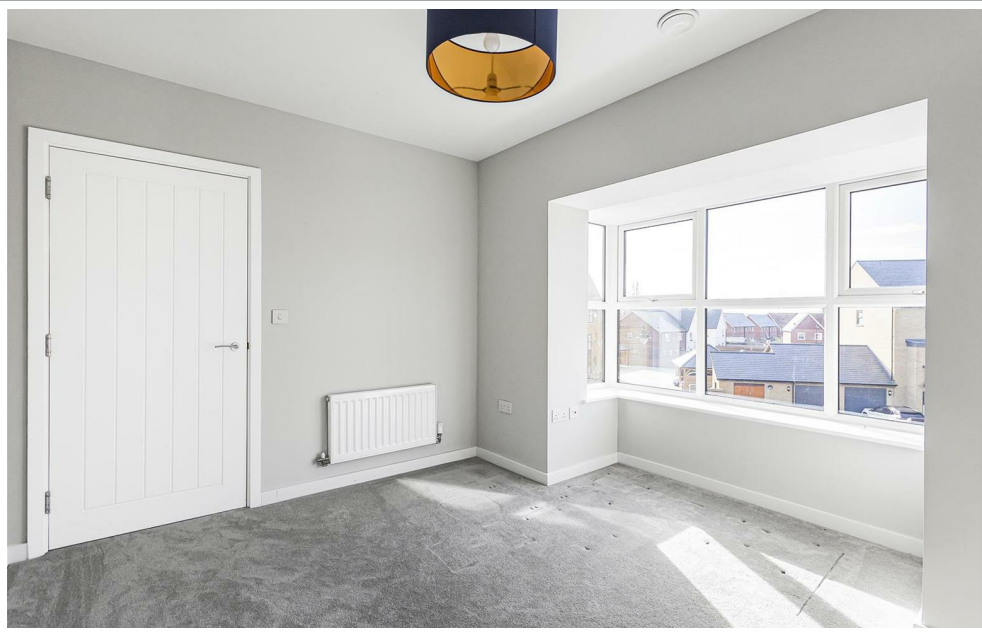
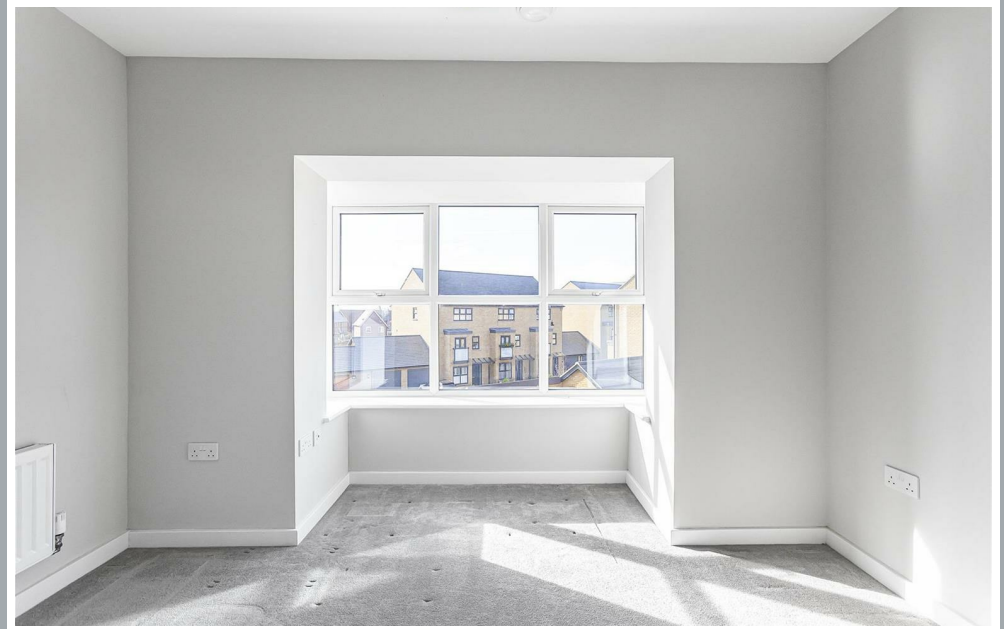
70 Fore Street, Hertford, Hertfordshire, SG14 1BY



70 Fore Street, Hertford, Hertfordshire, SG14 1BY



70 Fore Street, Hertford, Hertfordshire, SG14 1BY



70 Fore Street, Hertford, Hertfordshire, SG14 1BY

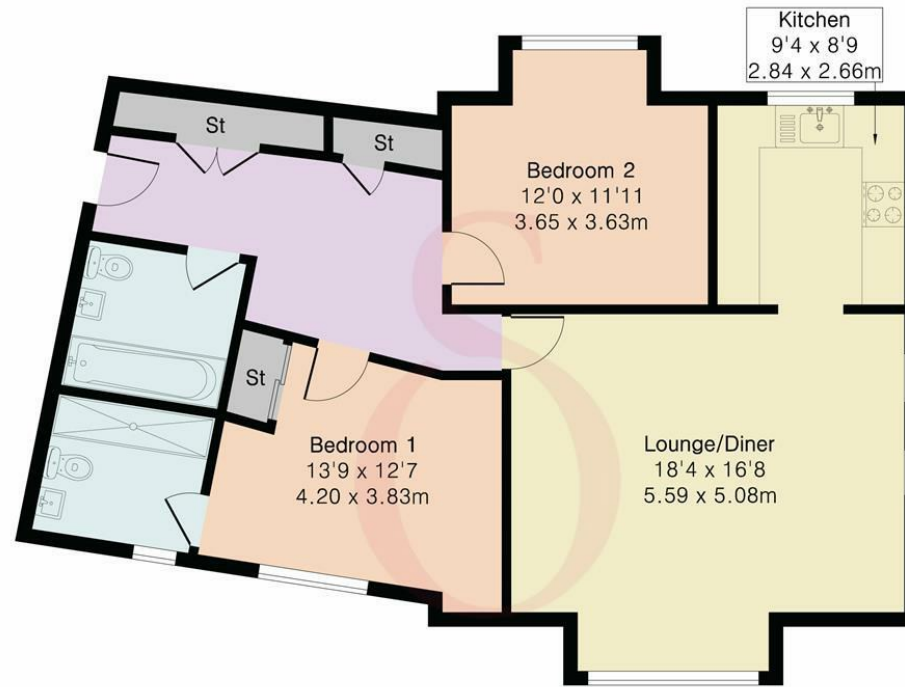


70 Fore Street, Hertford, Hertfordshire, SG14 1BY



70 Fore Street, Hertford, Hertfordshire, SG14 1BY

Approximate Gross Internal Area 914 sq ft - 85 sq m



Second Floor



Floor plan produced in accordance with RICS Property Measurement 2nd Edition. Although Pink Plan Ltd ensures the highest level of accuracy, measurements of doors, windows and rooms are approximate and no responsibility is taken for error, omission or misstatement. These plans are for representation purposes only and no guarantee is given on the total square footage of the property within this plan. The figure icon is for initial guidance only and should not be relied on as a basis of valuation.



These particulars, whilst believed to be accurate are set out as a general outline only for guidance and do not constitute any part of an offer or contract. Intending purchasers should not rely on them as statements of representation of fact, but must satisfy themselves by inspection or otherwise as to their accuracy. No person in this firm's employment has the authority to make or give any representation or warranty in respect of the property.

