



Burbage Close, SE1

£480,000

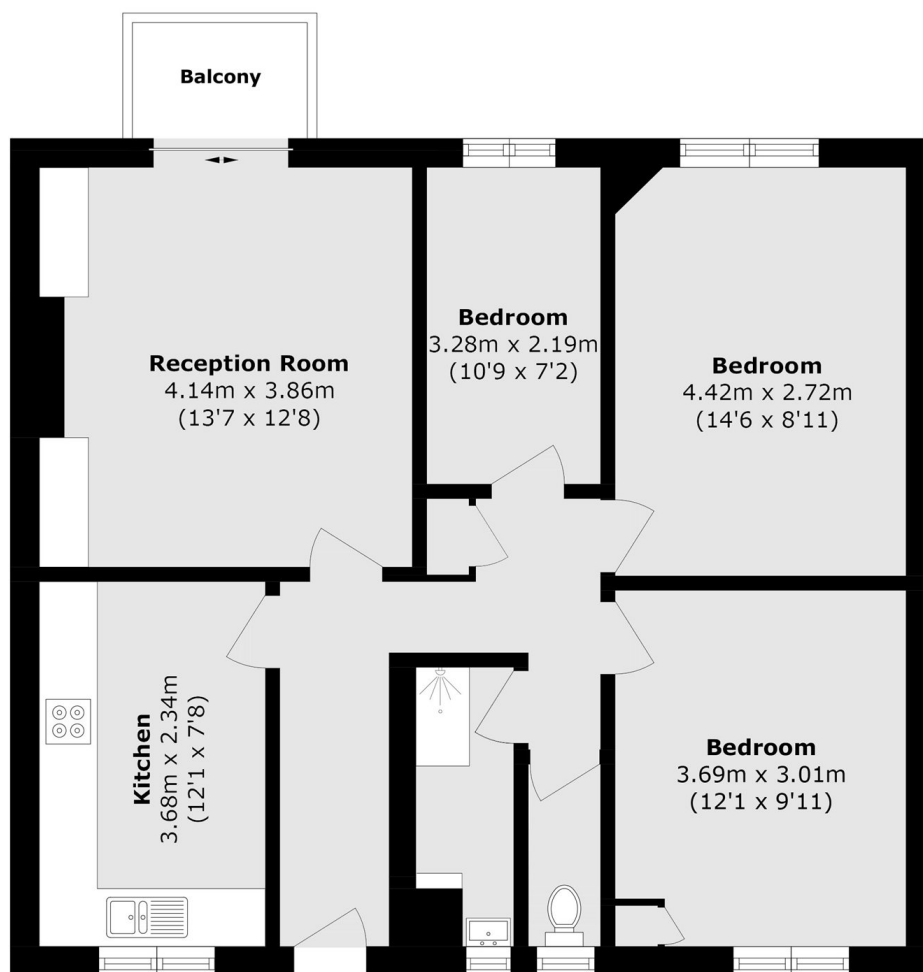
An impressive and attractively proportioned lateral flat, boasting a spacious living room, that opens onto a private south-facing balcony. The property also features a large kitchen-diner, with ample storage, three generously sized bedrooms, and a contemporary shower room, all thoughtfully arranged to create a bright and inviting home.

Burbage Close is a peaceful side street tucked just off Great Dover Street, 0.4 miles from Borough Underground station and within walking distance of London Bridge. The world-famous Borough Market, with its artisan food stalls and lively atmosphere, is just beyond, along with an array of cafés, bars, and restaurants.

Features

Third Floor Flat
Three Bedrooms
Private Balcony
Secure Entry & Lift Access
Permit Parking Available
Chain Free Sale

Burbage Close, London, SE1



Third Floor

Total area (approx.): 72.3 sq. m (778.2 sq. ft)

Balcony area (approx.): 2.1 sq. m (22.6 sq. ft)