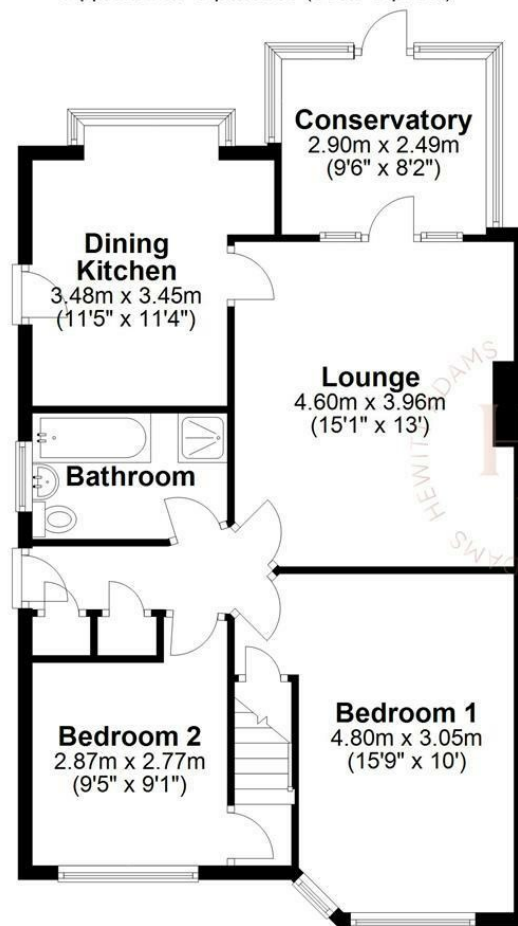




Ground Floor

Approx. 74.7 sq. metres (803.7 sq. feet)



First Floor

Approx. 35.8 sq. metres (385.8 sq. feet)



Total area: approx. 110.5 sq. metres (1189.5 sq. feet)
For illustration purposes only - not to scale

Irby Road, Wirral, CH61 6UX

£300,000

3 Bedroom 1 Reception 1 Bathroom E

****Three Bedroom Bungalow - Popular Heswall Location - Sold With No Chain - Excellent Condition****

Hewitt Adams is delighted to offer to the market with NO ONWARD CHAIN this three bedroom semi-detached dormer bungalow located on the POPULAR Irby Road in Heswall. A short distance from the CENTRE OF HESWALL and a stones throw from a Sainsburys local and a bus stop.

The bungalow comes to the market in EXCELLENT CONDITION having recently been RE-DECORATED, and a new owner could move straight in comfortably.

Another selling point is the SOUTH WESTERLY FACING rear garden.

In brief the accommodation affords; entrance hall, lounge, two ground floor bedrooms, kitchen diner, bathroom. Upstairs there is a further bedroom.

With off-road driveway parking, garage and a SOUTH WESTERLY FACING rear garden.

Call Hewitt Adams on 0151 342 8200 to view.

Front Entrance

Into;

Hall

Radiator, power points

Lounge

15'1" x 12'11" (4.6 x 3.96)

Double glazed patio doors into the conservatory, radiator, power points, log-burner

Bedroom

15'8" x 10'0" (4.8 x 3.05)

Double glazed window, radiator, power points

Bedroom

9'2" x 9'1" (2.8 x 2.77)

Double glazed window, radiator, power points

Kitchen Diner

11'5" x 11'3" (3.48 x 3.45)

Wall and base units, inset sink, integrated oven and hob, space for white goods, side door, double glazed window

Bathroom

Comprising shower, low level W.C, wash hand basin, towel rail. double glazed window

UPSTAIRS

Bedroom

19'1" x 11'8" (5.84 x 3.58)

Double glazed window, radiator, power points

EXTERNALLY

Front Aspect - Driveway, front garden, gated access to the rear garden and garage

Rear Aspect - South Westerly facing sunny rear garden comprising patio and attractive lawned garden with stocked borders and flowerbeds.

Council Tax Band

C

