

Frank Harris & Co.



Beaconsfield Road, SE9

£2,250 pcm

A Unique 2 bedroom terraced house with a recently refurbished kitchen and is offered furnished. A lovely spacious private garden to enjoy. This house is comprised over two stories, ample room for families and sharers alike.



Less than 20 minutes away from Mottingham and New Eltham Stations, both of the South Eastern Railway line, great connections around South East and Central London. Minutes away from Mottingham Sports Ground and Cold Harbour Leisure Centre.

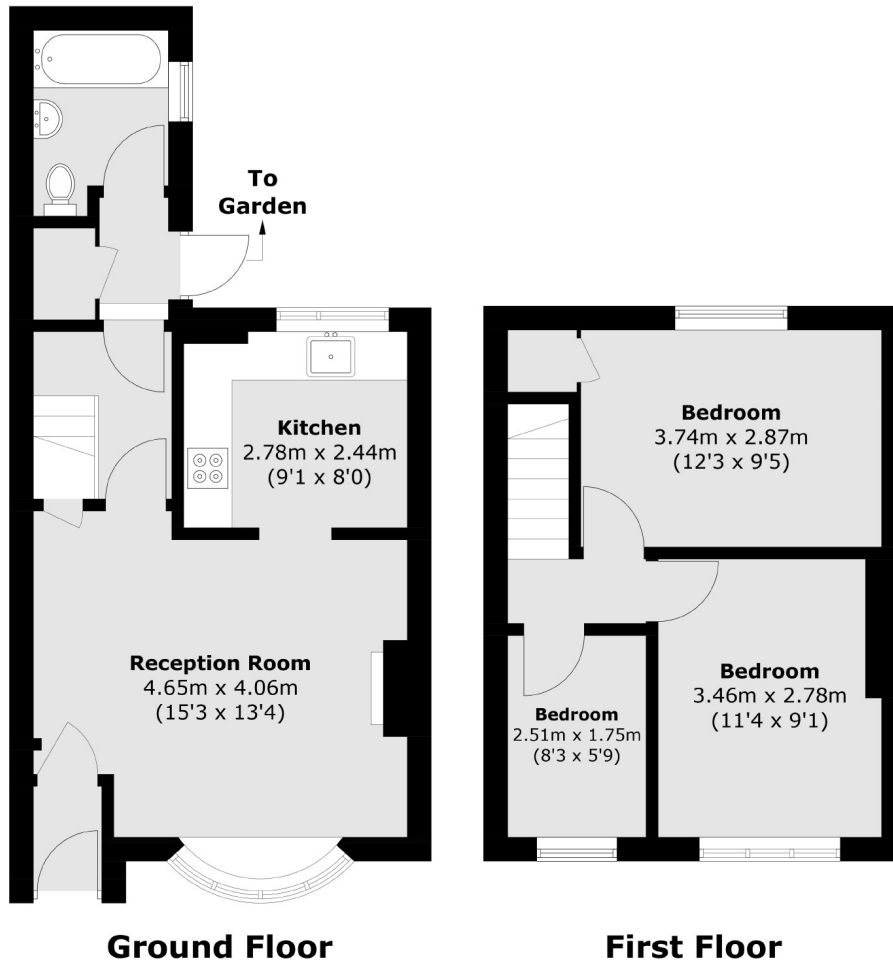
- Two Double Bedrooms • Separate room as study • Split Level •
- One Bathroom • Nearly Refurbished Kitchen • Private Garden •







Frank Harris & Co.



Total area (approx.): 65.5 sq. m (705.0 sq. ft)

Frank Harris & Co. Tower Bridge & Bermondsey
205 Tooley Street, London,
SE1 2JX
020 7234 0880
towerbridgelettings@frankharris.co.uk

Energy Rating: . We aim to make our particulars both accurate and reliable. However they are not guaranteed; nor do they form part of an offer or contract. If you require clarification on any points then please contact us, especially if you're traveling some distance to view. Please note that appliances and heating systems have not been tested and therefore no warranties can be given as to their good working order.

