



Broadoaks Streetsbrook Road, Solihull B91 1QY



welcome to

Broadoaks Streetsbrook Road, Solihull

A fantastic opportunity to acquire a luxury one bedroom first floor apartment in the popular complex of Broadoaks. The property is within close proximity to local amenities, within walking distance of Solihull town centre, railway stations and transport links.

Agent Note

The Council Tax Band is C

Entrance Hall

Storage cupboard with boiler.

Lounge/ Kitchen

22' 6" x 9' 6" (6.86m x 2.90m)

Double glazed window to side, double glazed Juliet balcony to side, fitted kitchen with a range of wall and base units with work surfaces over, spotlights, fridge/freezer, tiled flooring and central heating radiator.

Bedroom One

13' 4" x 8' 10" (4.06m x 2.69m)

Double glazed window to side, fitted wardrobe, spotlights and central heating radiator.

Bathroom

Bath, w.c, wash hand basin, spotlights and heated towel rail.

Parking

One allocated parking space.





view this property online shipways.co.uk/Property/SLY111930



welcome to

Broadoaks Streetsbrook Road, Solihull

- BROADOAKS COMPLEX
- LUXURY ONE BEDROOM APARTMENT
- FIRST FLOOR
- OPEN PLAN KITCHEN/LOUNGE
- LIFT AND STAIR ACCESS

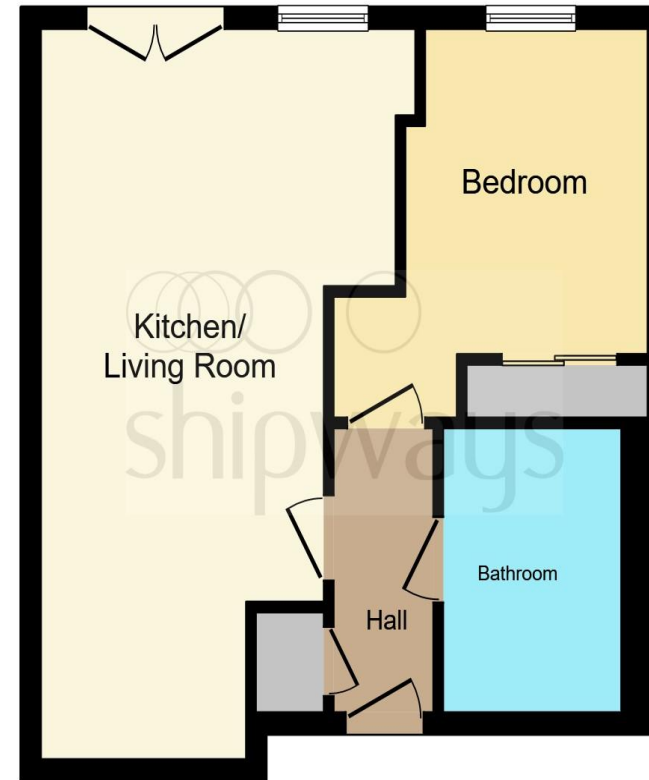
Tenure: Leasehold EPC Rating: D

Council Tax Band: C Service Charge: 1738.00

Ground Rent: 189.00

This is a Leasehold property. We are awaiting further details about the Term of the lease. For further information please contact the branch. Please note additional fees could be incurred for items such as Leasehold packs.

£185,000



This floor plan is for illustrative purposes only. It is not drawn to scale. Any measurements, floor areas (including any total floor area), openings and orientation are approximate. No details are guaranteed, they cannot be relied upon for any purpose and they do not form part of any agreement. No liability is taken for any error, omission or misstatement. A party must rely upon its own inspection(s). Powered by www.focalagent.com

view this property online shipways.co.uk/Property/SLY111930



Property Ref:
SLY111930 - 0005

1. MONEY LAUNDERING REGULATIONS Intending purchasers will be asked to produce identification documentation at a later stage and we would ask for your co-operation in order that there is no delay in agreeing the sale. 2. These particulars do not constitute part or all of an offer or contract. 3. The measurements indicated are supplied for guidance only and as such must be considered incorrect. Potential buyers are advised to recheck measurements before committing to any expense. 4. We have not tested any apparatus, equipment, fixtures or services and it is in the buyers interest to check the working condition of any appliances. 5. Where an EPC, or a Home Report (Scotland only) is held for this property, it is available for inspection at the branch by appointment. If you require a printed version of a Home Report, you will need to pay a reasonable production charge reflecting printing and other costs. 6. We are not able to offer an opinion either written or verbal on the content of these reports and this must be obtained from your legal representative. 7. Whilst we take care in preparing these reports, a buyer should ensure that his/her legal representative confirms as soon as possible all matters relating to title including the extent and boundaries of the property and other important matters before exchange of contracts.



0121 744 4595



shirley@shipways.co.uk



208 Stratford Road, Shirley, SOLIHULL, West Midlands, B90 3AG



shipways.co.uk