

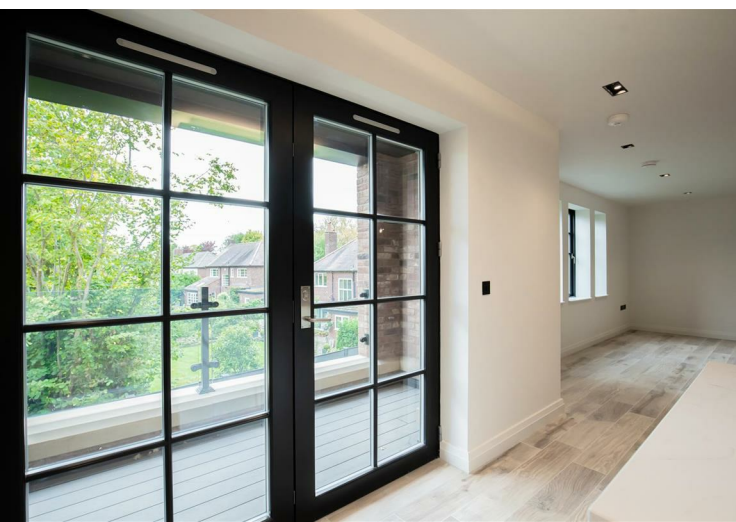
## Fernleigh House, Wilmslow

Wilmslow, SK9 1PA

£4,250 PCM

- Stunning new build 1st floor apartment (with lift)
- Town centre location
- Master bedroom with en-suite
- Modern family bathroom
- Contemporary and high spec finish
- Gated entrance
- Large open plan kitchen, dining, living room
- Two further good sized bedrooms
- Utility Room
- Two allocated parking spaces





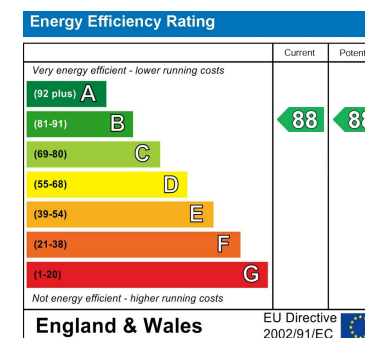




Council Tax Band:  
Tax Band G

Tenure:

Local Authority:  
Cheshire East Council



**Hale Office:**

190A Ashley Road  
Hale  
Cheshire  
WA15 9SF  
Tel: 0161 929 8546

**Wilmslow Office:**

Blackbox  
Beech Lane  
Wilmslow  
Cheshire SK9 5ER  
Tel: 01625 523605

**Email:**

[hale@bensonbunch.co.uk](mailto:hale@bensonbunch.co.uk)  
[info@bensonbunch.co.uk](mailto:info@bensonbunch.co.uk)

**Website:**

[www.bensonbunch.co.uk](http://www.bensonbunch.co.uk)

**Agents Note:** Whilst every care has been taken to prepare these sales particulars, they are for guidance purposes only. All measurements are approximate are for general guidance purposes only and whilst every care has been taken to ensure their accuracy, they should not be relied upon and potential buyers are advised to recheck the measurements