

## Eynham Road, W12

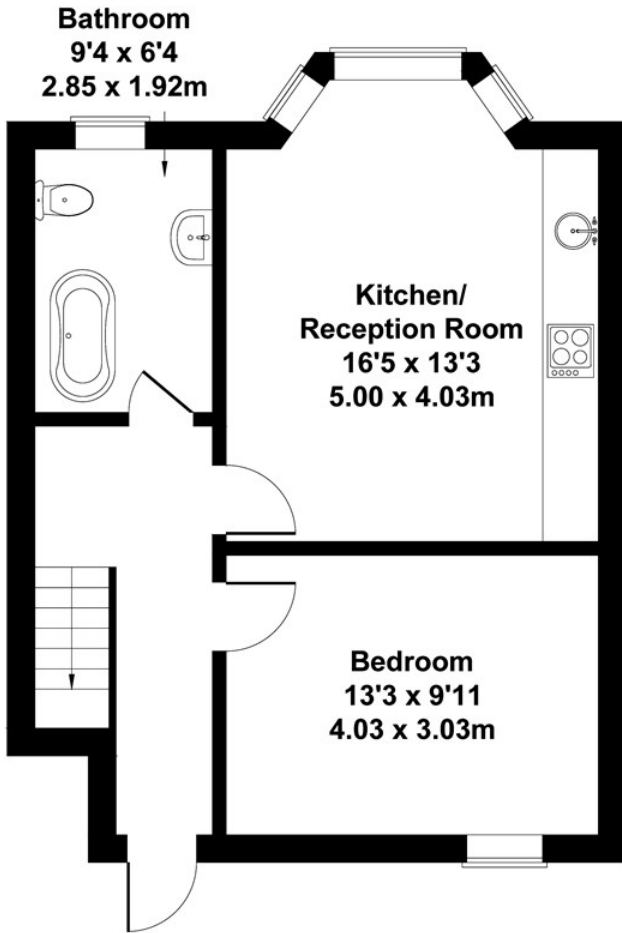
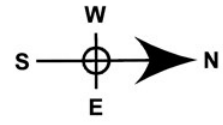
LONG LET. This stunning three bedroom split level flat boasts a modern interior is situated perfectly for local amenities and transport links.

- WALKING DISTANCE TO WESTFIELD
- MODERN INTERIOR
- OPEN PLAN KITCHEN
- THREE BEDROOMS
- TWO BATHROOMS
- CLOSE TO TRANSPORT

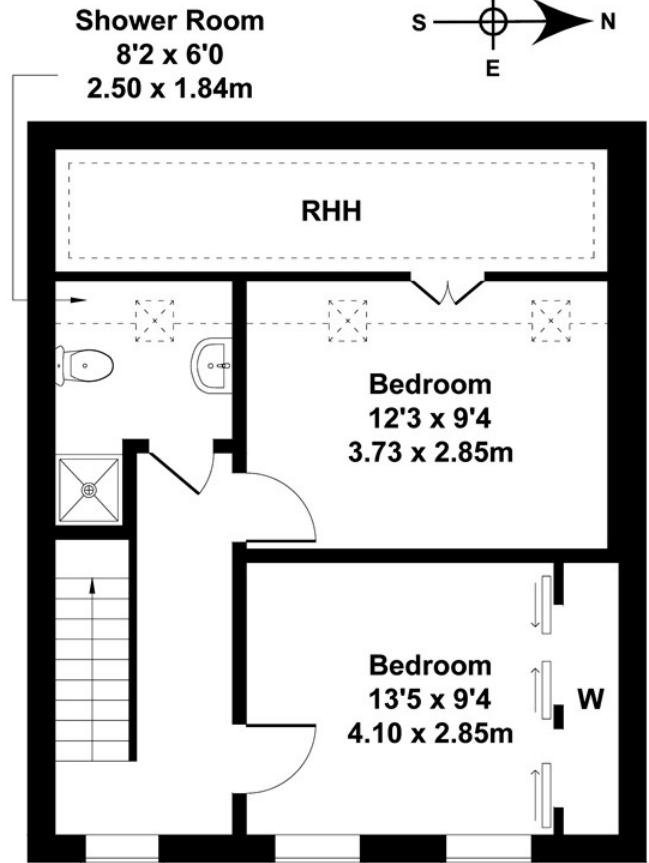
£2,800 PCM

# Eynham Road

Approximate Gross Internal Area  
980 sq ft - 91 sq m



**FIRST FLOOR**



**SECOND FLOOR**

Not to Scale. Produced by The Plan Portal 2021  
**For Illustrative Purposes Only.**

Energy Efficiency Rating		
	Current	Potential
<i>Very energy efficient - lower running costs</i>		
(92 plus) <b>A</b>		
(81-91) <b>B</b>		
(69-80) <b>C</b>		
(55-68) <b>D</b>		
(39-54) <b>E</b>		
(21-38) <b>F</b>		
(1-20) <b>G</b>		
<i>Not energy efficient - higher running costs</i>		
<b>England &amp; Wales</b>	EU Directive 2002/91/EC	