



Guide Price
£600,000

Freehold

2x  1x  1x 

**The Glen, Shirley,
Croydon, Surrey, CR0**

OVER 60?

Secure this property
for up to **59% less!**

cubitt & west
Helping you move forwards



Main features

- Chain Free
- Ready to move into
- Landscaped front and back garden flooded with natural sunlight
- Moments away from local highstreet
- Driveway and side access

Accommodation

GROUND FLOOR

Hallway

Shower Room

Separate Toilet

Kitchen: 10'9 x 9'7 (3.28m x 2.92m)

Lounge: 15'9 x 13'5 (4.80m x 4.09m)

Dining Room : 11'5 x 10'8 (3.48m x 3.25m)

Bedroom 1: 13'6 x 12'2 (4.12m x 3.71m)

Bedroom 2: 13'5 x 11'9 (4.09m x 3.58m)

OUTSIDE

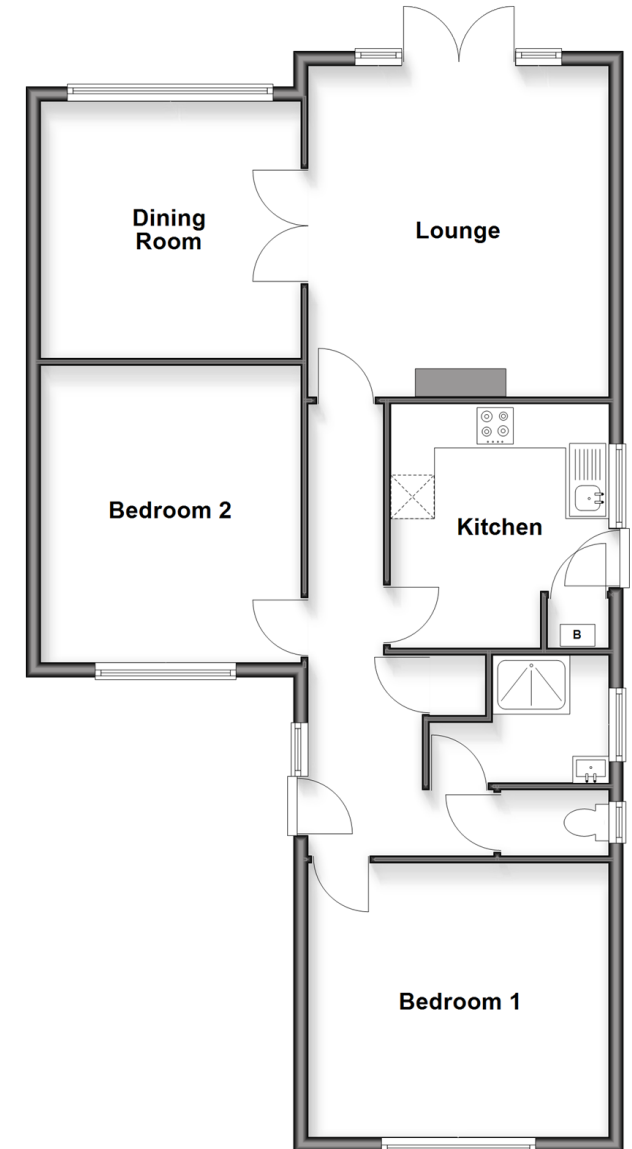
Front Garden

Driveway

Rear Garden

Ground Floor

Approx. 89.6 sq. metres (963.9 sq. feet)



Call Shirley - 020 8654 3037 ■ cubittandwest.co.uk

■ Through a Homewise Home For Life Plan people aged 60+ can secure this property for up to 59% less, by purchasing a Lifetime Lease



21708681/20260320/MS/MS