

Brewster Place Kingston Upon Thames KT1

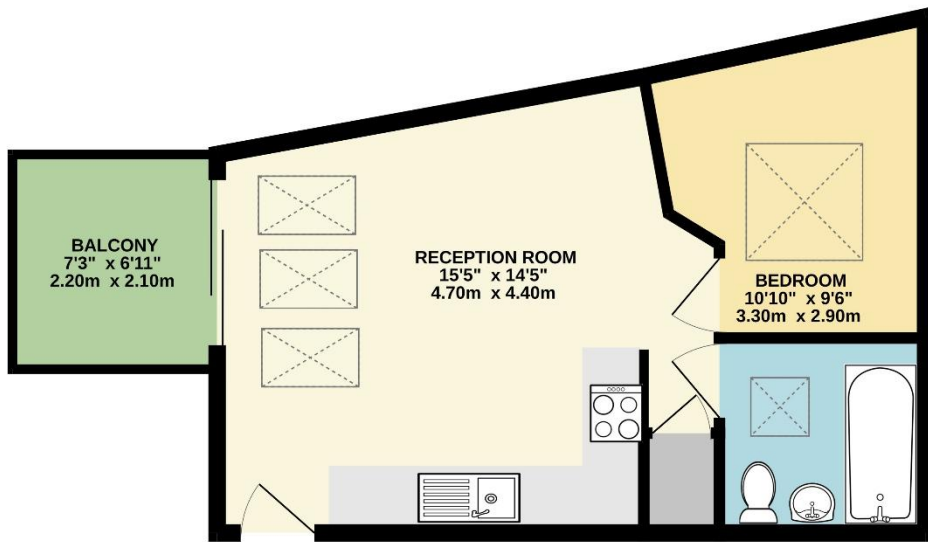


- **Modern One Bedroom Apartment**
- **Open-Plan Reception/Kitchen**
- **Private Roof Terrace**
- **Close to Transport Links**

Price £1,495 pcm

Set within the popular "Triangle" location giving easy access to Kingston, Norbiton and New Malden, a modern one bedroom apartment offered in great condition throughout. There is underfloor heating and the accommodation comprises an open-plan living room and kitchen with door opening out to a private roof terrace and there is also a double bedroom and modern bathroom. There are superb transport links close by and viewings are highly recommended. The property is unfurnished and available now. Security deposit £1,725 (based on the asking price). Council tax band B. EPC rating C.

FIRST FLOOR



TOTAL FLOOR AREA: 360 sq.ft. (33.4 sq.m.) approx.

Whilst every attempt has been made to ensure the accuracy of the floorplan contained here, measurements of doors, windows, rooms and any other items are approximate and no responsibility is taken for any error, omission or mis-statement. This plan is for illustrative purposes only and should be used as such by any prospective purchaser. The services, systems and appliances shown have not been tested and no guarantee as to their operability or efficiency can be given.
Made with Metropix ©2025