



**POOLE
TOWNSEND**

Charney Road, Grange-over-sands, LA11 6BP

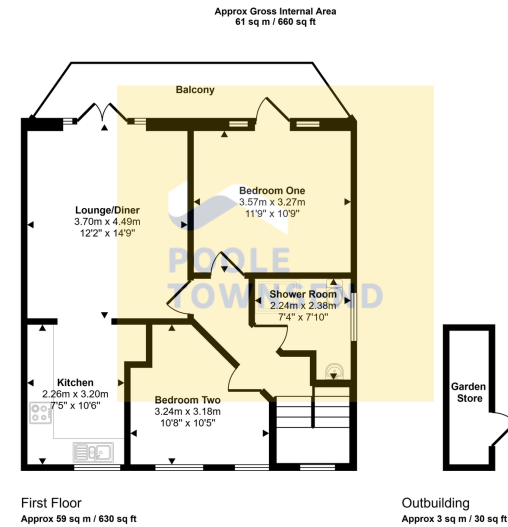
£275,000

🛏️ 2 🪑 1 🚗 1



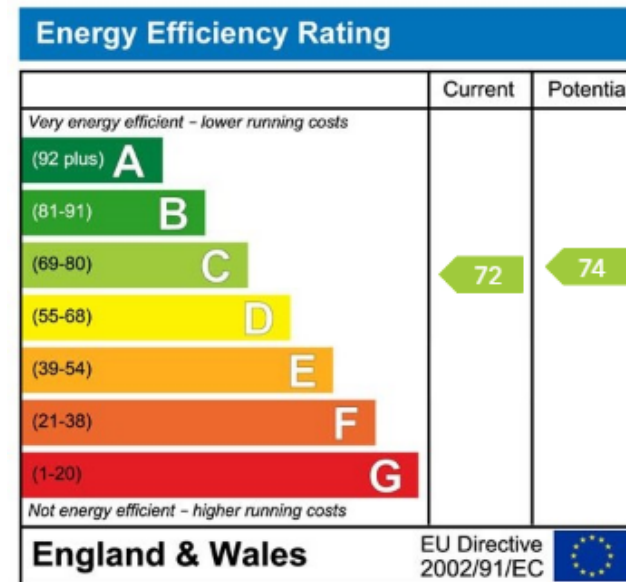
- First-floor apartment in a quiet, leafy residential area of Grange-over-Sands
- Modern fitted kitchen included in the accommodation
- Two good-sized double bedrooms, with the master bedroom also having balcony
- Parking for two cars
- Leasehold
- Spectacular views of Morecambe Bay from the apartment.
- Open-plan lounge/diner with glazed doors opening onto a balcony.
- Stylish shower room, finished to a high standard.
- Low-maintenance paved patio and lockable storage outbuilding for additional parking
- Council Tax Band -





This floorplan is only for illustrative purposes and is not to scale. Measurements of rooms, doors, windows, and any items are approximate and no responsibility is taken for any error, omission or mis-statement. Icons of items such as bathroom suites are representations only and may not look like the real items. Made with Made Snappy 360.

Nestled in a quiet, leafy residential area of Grange-over-Sands, this first-floor apartment enjoys spectacular views of Morecambe Bay and is offered with no onward chain. Naturally bright and generously proportioned, the accommodation features a modern fitted kitchen and an open-plan lounge/diner that features glazed doors opening onto a balcony to take full advantage of the views. The apartment also offers two good-sized double bedrooms, with the master also enjoying balcony access, and a stylish shower room, all finished to a high standard. Externally, there is parking for two cars, a low-maintenance paved patio, and a lockable storage outbuilding, providing practicality alongside attractive outdoor space.



Visit us at
www.pooletownsend.co.uk
enquiries@pooletownsend.co.uk

We are open
 Monday – Friday 9.00 – 5.00
 Saturday 9.00 – 1.00

Barrow 01229 811811
 Ulverston 01229 588111
 Grange 015395 33316
 Kendal 01539 734455
 Milnthorpe 015395 62044