



First Floor Flat Citadel Road, PLYMOUTH,  
£190,000 Leasehold





## First Floor Flat Citadel Road

### PLYMOUTH

Charming 2-bed flat on The Hoe. Open plan kitchen diner with fireplace, character features, and modern comforts. Two double bedrooms, tiled shower room, 2 W/Cs, prime location for city living & seaside retreat. Contact for viewing.

Council Tax band: B

Tenure: Share of Freehold

- One Bedroom First Floor Flat with Guest Room
- Open Plan Kitchen Diner
- Perfect For Those Working From Home
- Character Fireplace and Coving Features
- Two W/Cs
- Tiled Shower Room
- Located Minutes From the City Centre and The Hoe





# First Floor Flat Citadel Road

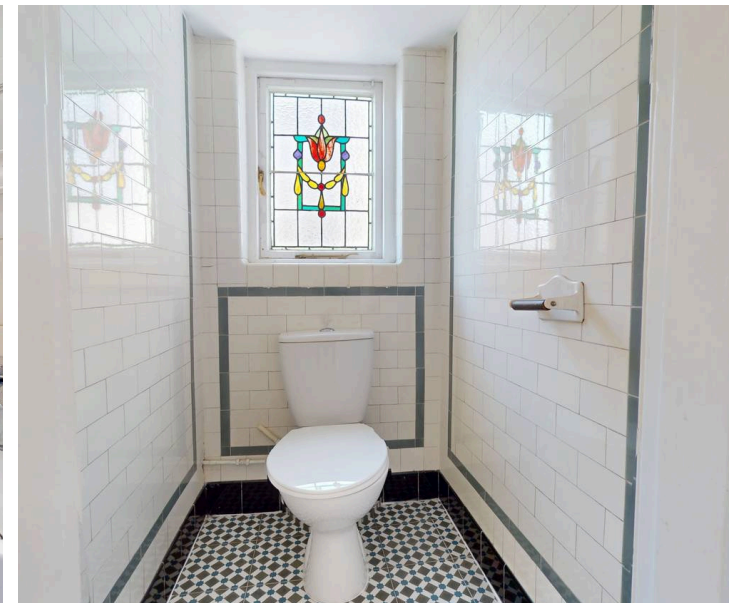
## PLYMOUTH

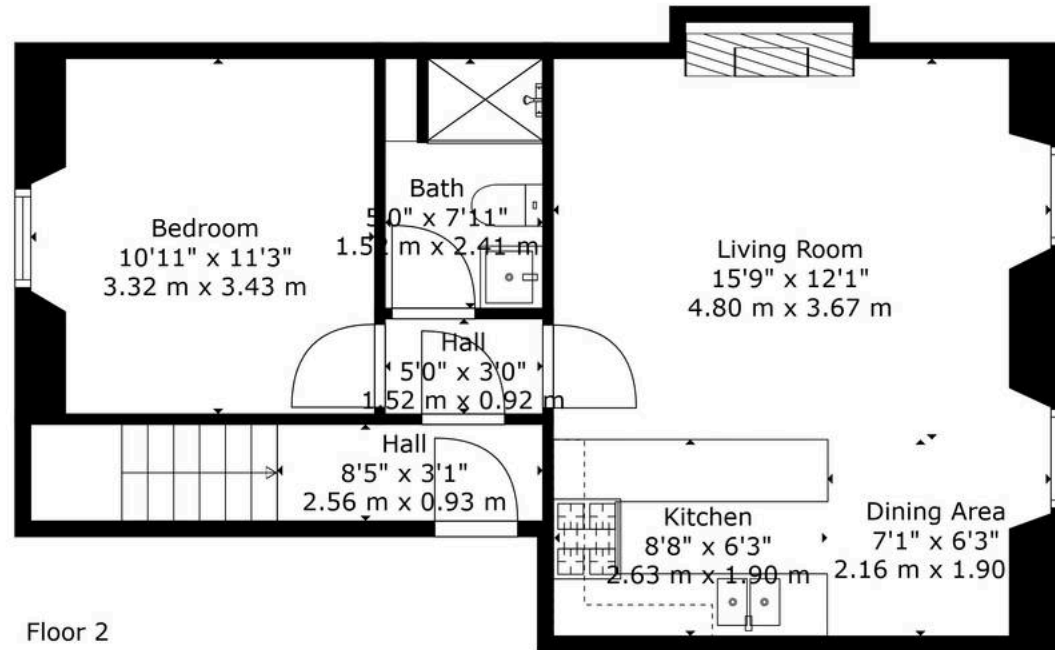
Welcome to this fantastic One bedroom first-floor flat, located just minutes from the bustling city centre and the picturesque Hoe. This charming property, perfect for those working from home, offers a unique blend of character and modern comforts in a prime location.

Step into the open plan kitchen diner, a vibrant space perfect for entertaining guests or relaxing after a long day. The character fireplace adds a touch of warmth and elegance, while the high ceilings and coving features create a sense of sophistication in the room.

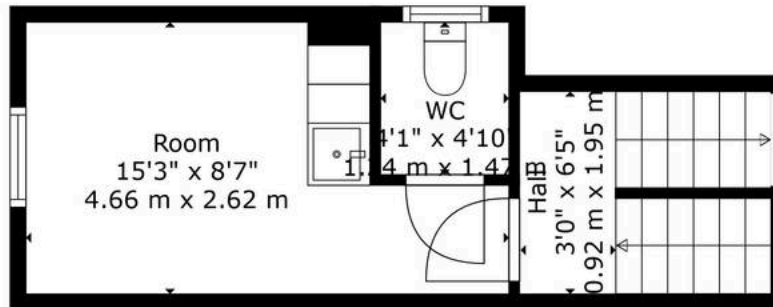
The bedroom provide ample space for rest and relaxation, offering a comfortable retreat from the busy city life. The tiled shower room adds a touch of luxury, providing a modern and convenient space to unwind.

With two W/Cs, this flat provides added convenience for residents and visitors alike. The layout is thoughtfully designed to enhance functionality and comfort, with the addition of a separate guest room making every-day living a breeze.





Floor 2



Floor 1





## Atwell Martin

Atwell Martin, 65 Southside Street – PL1 2LA

01752 202121

[plymouthsales@atwell-martin.co.uk](mailto:plymouthsales@atwell-martin.co.uk)

[plymouth.atwellmartin.co.uk/](http://plymouth.atwellmartin.co.uk/)

Atwell Martin Plymouth endeavour to ensure the accuracy of property details produced and displayed. Please note that we have not tested any apparatus, equipment, fixtures, fittings or services and so cannot verify that they are connected, in working order or fit for purpose. It is imperative that the buyer of any property makes such checks, prior to purchase so as to satisfy themselves of the properties suitability for their purchase. .

