

for sale

fixed price **£190,000**



Poppyfield Road Wootton Northampton NN4 6NE

A spacious two-bedroom first-floor apartment, set within an exclusive block of just three apartments. Early Viewing advised.

Poppyfield Road Wootton Northampton NN4 6NE

Entrance Hall

Doors leading to lounge/ kitchen/ diner area, bathroom, two bedrooms and utility cupboard. Radiator.

Utility Cupboard

Double doors. Shelving. Plumbing for washing machine.

Open Lounge/Kitchen/Diner Area

Kitchen/ Diner Area

Fitted with a range of wall and base level units. One and a half stainless steel sink and drainer set beneath the work surface. Tiled to splash back areas. Integrated appliances comprising a dishwasher, oven and gas hob with a cooker hood over. Central heating boiler. Radiator. Double glazed window to the side and rear elevation.

Lounge Area

Double glazed window to the side elevation. Radiator.

Bedroom One

Double glazed window to the rear elevation. Radiator.

Bedroom Two

Two double glazed windows to the rear and side elevation. Radiator.

Bathroom

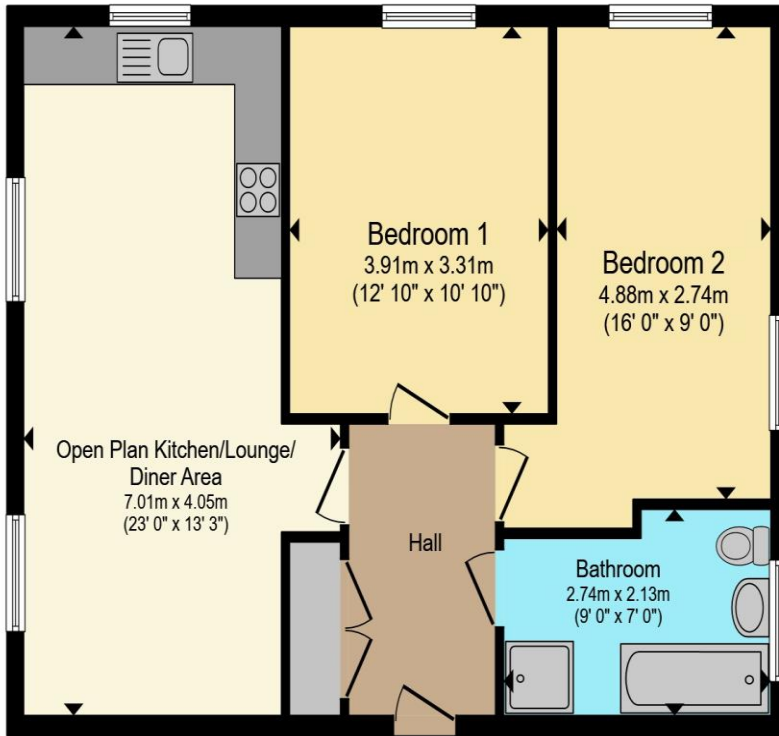
Four piece white suite comprising bath, shower cubicle, wash hand basin and low level flush wc. Heated towel rail. Double glazed opaque window to the side elevation. Partly tiled.

Parking

Two allocated parking bays.







Ground Floor

Total floor area 67.9 m² (730 sq.ft.) approx

This floor plan is for illustrative purposes only. It is not drawn to scale. Any measurements, floor areas (including any total floor area), openings and orientation are approximate. No details are guaranteed, they cannot be relied upon for any purpose and they do not form part of any agreement. No liability is taken for any error, omission or misstatement. A party must rely upon its own inspection(s). Powered by www.propertybox.io

Connells

To view this property please contact Connells on

T 01604 706644
E woottonfields@connells.co.uk

11 Tudor Court Wootton Hope Drive Wootton
 NORTHAMPTON NN4 6FF

Property Ref: WFL408685 - 0002

Tenure:Leasehold EPC Rating: B

Council Tax Band: C Service Charge: Ask Agent

Ground Rent: Ask Agent

view this property online connells.co.uk/Property/WFL408685

This is a Leasehold property. We are awaiting further details about the Term of the lease. For further information please contact the branch. Please note additional fees could be incurred for items such as Leasehold packs.

1. MONEY LAUNDERING REGULATIONS Intending purchasers will be asked to produce identification documentation at a later stage and we would ask for your co-operation in order that there will be no delay in agreeing the sale. 2. These particulars do not constitute part or all of an offer or contract. 3. The measurements indicated are supplied for guidance only and as such must be considered incorrect. Potential buyers are advised to recheck measurements before committing to any expense. 4. We have not tested any apparatus, equipment, fixtures, fittings or services and it is in the buyers interest to check the working condition of any appliances.

Connells Residential is registered in England and Wales under company number 1489613, Registered Office is Cumbria House, 16-20 Hockliffe Street, Leighton Buzzard, Bedfordshire, LU7 1GN. VAT Registration Number is 500 2481 05.

see all our properties at www.connells.co.uk | www.rightmove.co.uk | www.zoopla.co.uk

