



## Mayday Gardens, SE3

£685,000

A beautifully presented three bedroom semi-detached 1930s freehold family home, situated on the sought-after Mayday Gardens, SE3. Offering generous living accommodation, off-street parking for two cars, a garage and a stunning south-facing garden, this is an exceptional home ideal for family living.

Mayday Gardens is a sought-after residential street offering excellent transport links. Kidbrooke, Eltham and Blackheath stations provide regular services into London Bridge, Charing Cross and Victoria, while Woolwich offers access to the Elizabeth Line and DLR. The area is popular with families, with several highly regarded schools nearby, including Wingfield Primary School,

### Features

- Semi Detached
- Excellent Condition
- Scope To Extend (STPP)
- Off Street Parking
- Large Garden
- Garage

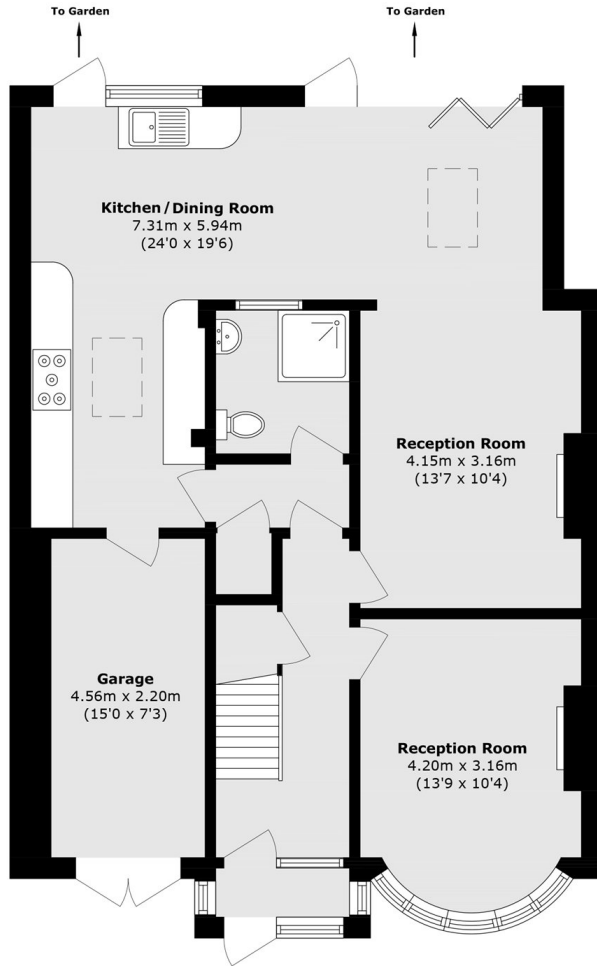


## Mayday Gardens, SE3

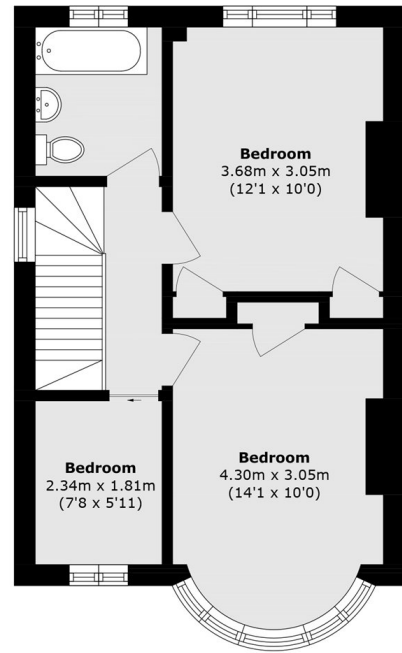
The ground floor comprises a welcoming front dining room, perfect for formal entertaining, while to the rear there is a spacious living room that seamlessly opens into an impressive wrap-around extension. Flooded with natural light through large bi-fold doors, this outstanding space overlooks and opens directly onto the beautifully maintained south-facing garden. The contemporary kitchen is thoughtfully designed with a range of integrated appliances, ample storage and generous worktop space. The ground floor further benefits from a modern shower room and internal access to the garage. Upstairs, the property offers three well-proportioned bedrooms and a stylish contemporary family bathroom. There is also excellent potential to extend into the loft space (STPP).



# Mayday Gardens, London, SE3



**Ground Floor**



**First Floor**

Total area (approx.): 125.6 sq. m (1351.9 sq. ft)  
(Including Garage)