

FREEHOLD



House - Terraced (EPC Rating: )

16 SHERWOOD STREET, LLWYNYPIA,  
TONYPANDY, CF40 2TB

£137,500



3



1



1



# 3 Bedroom House - Terraced located in Tonypanydy

Nestled in the charming area of Llwynypia, Sherwood Street presents an excellent opportunity for those seeking a house in a welcoming community. This property, while currently listed with no specified square footage, offers the potential for a comfortable living space tailored to your needs.

Llwynypia is known for its picturesque surroundings and friendly atmosphere, making it an ideal location for families and individuals alike. The area boasts convenient access to local amenities, including shops, schools, and parks, ensuring that all your daily needs are within easy reach.

This house on Sherwood Street is a blank canvas, ready for you to transform it into your dream home. Whether you envision a modern renovation or a more traditional aesthetic, the possibilities are endless.

If you are looking for a property that combines potential with a lovely community feel, this house in Llwynypia could be the perfect fit for you. Do not miss the chance to explore what this property has to offer.

## Living Room

23x7 x 14x7

This large living room offers a bright and spacious area with light walls and carpeted floors. The room benefits from natural light coming through the bay window, complemented by patterned curtains. A staircase leads to the upper floor, and there is a brick-style wall section adding character to the room. The space is ideal for relaxing and entertaining.

## Kitchen

13x X 9x5

This kitchen is fitted with wooden cabinetry that provides ample storage and features a dark countertop surface. It includes a double stainless steel sink situated below a window, allowing natural light to brighten the space. The kitchen is equipped with integrated appliances, including an oven, hob, and washing machine. The floor is covered with practical tile flooring. The kitchen offers both functionality and a tidy, well-organised layout.

## Landing

A landing area with neutral walls and a warm red carpet floor. It features a wooden balustrade overlooking the stairs and has a wooden door leading to another part of the house. The space is bright and airy, benefiting from natural light, making it a pleasant transition area between rooms upstairs.

## Bedroom 1

12x X 11x4

This bedroom is a comfortable space with two windows dressed in dark curtains that allow plenty of natural light to enter. The room is carpeted. A large mirrored sliding

wardrobe door reflects light and provides generous storage, while a white chest of drawers completes the furniture arrangement, offering additional storage options.

## Bedroom 2

11x8 X 9x4

A softly decorated bedroom with pale blue walls, dark carpeting, and a double bed. The room contains a white chest of drawers, a dark bedside table, and a white desk, creating a functional yet cosy atmosphere. Natural light flows in through the window, enhancing the calm and restful environment.

## Bedroom 3

8x6 X 6x1

This bedroom has a beige carpet floor and a feature wall painted in a deep red tone. The room includes a single bed, a mirrored wardrobe, and a matching chest of drawers and bedside cabinet. The neutral walls and furnishings provide a fresh and inviting space.

## Bathroom

6x9 X 5x3

The bathroom is presented in a clean and modern style with black floor tiles and white wall tiles featuring a decorative border. It includes a curved glass shower cubicle, a white toilet, and a corner basin with a vanity unit beneath. A large mirrored cabinet above the sink adds both light and storage, while a window allows for ventilation and daylight.

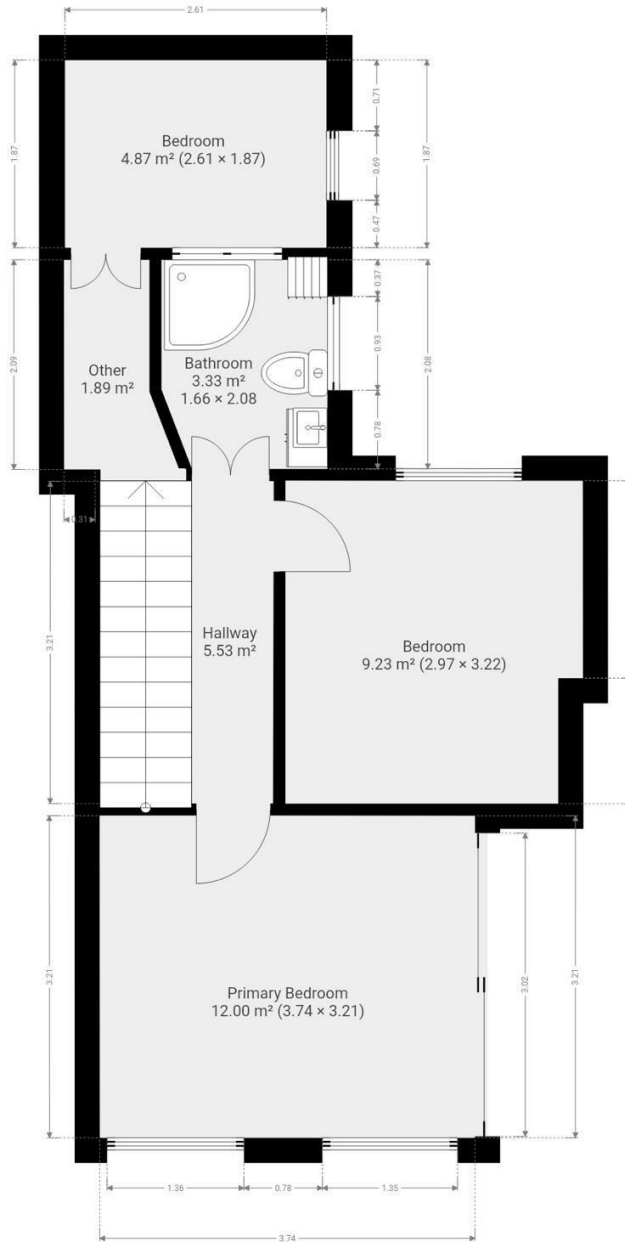
## Rear Garden

This rear garden offers a peaceful outdoor space with a paved patio area leading to a well-maintained lawn bordered by walls and fencing. A paved path runs through



the garden, which includes a shed for storage and a covered area that can be used for seating or outdoor activities. The garden is enclosed and private, with mature trees visible beyond the fence, creating a tranquil setting.





THIS FLOOR PLAN IS PROVIDED WITHOUT WARRANTY OF ANY KIND. SENSOPIA DISCLAIMS ANY WARRANTY INCLUDING, WITHOUT LIMITATION, SATISFACTORY QUALITY OR ACCURACY OF DIMENSIONS.

Council Tax Band

**A**

Energy Performance Graph

Energy Efficiency Rating		Current	Potential
<i>Very energy efficient - lower running costs</i>			
(92 plus) <b>A</b>			
(81-91) <b>B</b>			
(69-80) <b>C</b>			
(55-68) <b>D</b>			
(39-54) <b>E</b>			
(21-38) <b>F</b>			
(1-20) <b>G</b>			
<i>Not energy efficient - higher running costs</i>			
<b>England &amp; Wales</b>	EU Directive 2002/91/EC		

Call us on

**01443 43599**

[sales@osborneestates.co.uk](mailto:sales@osborneestates.co.uk)

[osborneestates.co.uk](http://osborneestates.co.uk)

Agents Note: Whilst every care has been taken to prepare these particulars, they are for guidance purposes only. All measurements are approximate and are for general guidance purposes only and whilst every care has been taken to ensure their accuracy, they should not be relied upon and potential buyers are advised to recheck the measurements.