

Brixton Hill, Brixton, SW2

1 bedroom flat - purpose built for sale

£425,000

Leasehold

Property Details

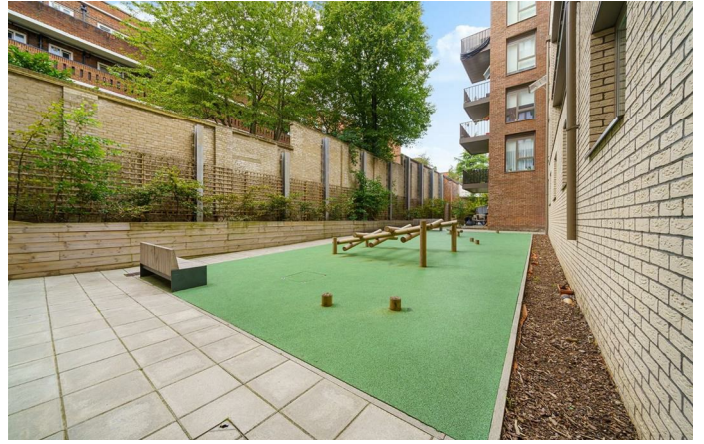
An exceptional one bedroom apartment with a private terrace and three Juliet balconies, in a sought-after luxury building. The open-plan reception boasts floor-to-ceiling glass dominating two walls, a wonderfully inviting space. The lounge is the ideal place to unwind, with space for a dining area, whilst the kitchen is fully integrated and neatly arranged. Two Juliet balconies allow air to breeze through the room, whilst sliding doors flow to the private terrace. South-West facing this low-maintenance terrace is ideal for al-fresco dining. The bedroom is a generous and bright double with full-height glass doors leading to yet another Juliet balcony, a lovely setting for relaxing weekends. The bedroom has built-in wardrobes plus space for further storage and a desk or dressing table if desired. The bathroom is spacious with mirrored storage and bathtub with overhead shower. Other selling points include built-in storage in the flat entrance, whilst the building as a whole has lifts, remaining build warranty, bike store, parcel lockers, residents' garden and residents' roof terrace with impressive views. *Please note one of the reception images and the bedroom have been virtually staged with furnishings*

Features

- One double bedroom
- Private South-West facing terrace plus three Juliet balconies
- Over 550 square feet
- Positioned away from the street
- Residents' roof terrace and garden
- Secure bike storage and lift
- Central Brixton, moments from Brixton tube station and Brixton Village
- A short stroll to Brockwell Park
- Chain-free

Council tax band C EPC rating B (82)



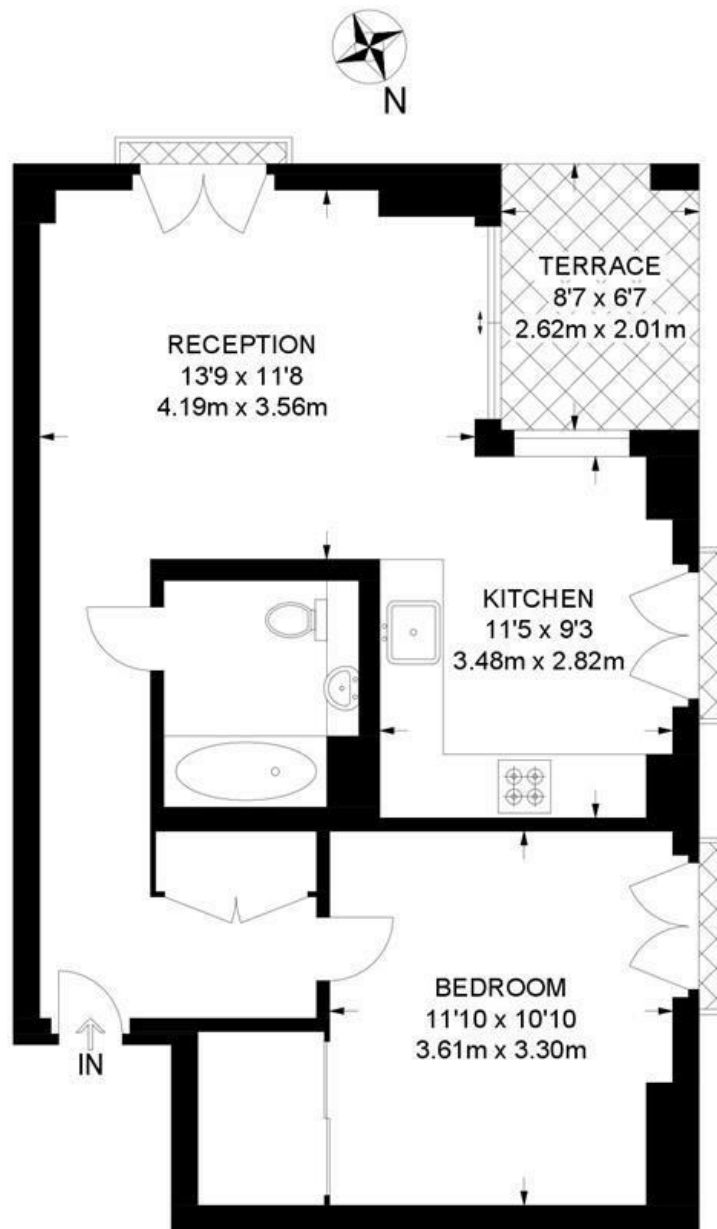


Brixton Hill, Brixton, SW2

Brixton Hill, SW2

1 Bedroom Flat

APPROXIMATE GROSS INTERNAL AREA: **560 SQ FT / 52 SQ M**



FIRST FLOOR



While we try our very best, floor plans are produced as a guide only and we take no responsibility for the precise accuracy with which any property is represented.

Brixton Hill, Brixton, SW2

