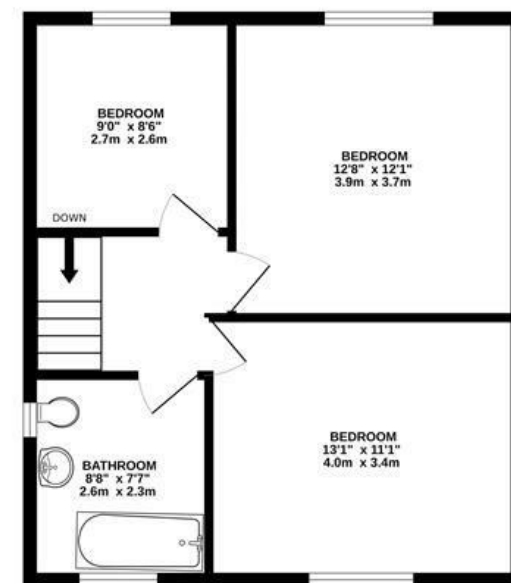
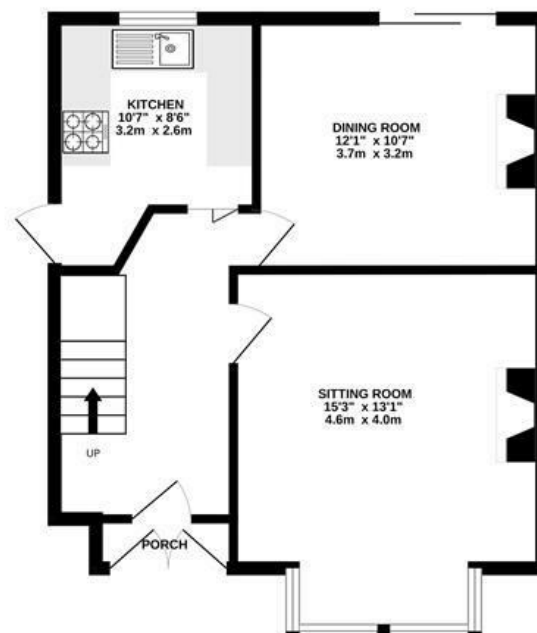


# Imperial Walk

## KNOWLE

APPROXIMATE FLOOR AREA  
90SQM / 971 SQFT



Illustrations are for reference purposes only,  
measurements are approximate, not to scale.

**Boardwalk**

# Imperial Walk

KNOWLE, BRISTOL

£

£390,000

zzz

3 Bedrooms



BS14 9AD



1 Bathrooms

*"The location is perfect, with views across the nature reserve, and south Bristol. It's a quiet street and it's been a happy home for the last 20 years!"*

