



**Dene Close, Wellingborough NN8 5QP**

**welcome to**

## **Dene Close, Wellingborough**

Situated in a cul-de-sac position occupying a corner plot. This well presented five bedroom detached family home offering generous living accommodation, three reception rooms, room to en-suite to master bedroom, garage, double glazing, gas radiator and central heating.

### **Entrance Hall**

Double glazed obscured door and window to the front aspect, stairs rising to first floor landing and radiator.

### **Shower Room**

Double glazed obscured window to the rear aspect, suit comprising built in double shower, vanity wash hand basin, low level WC, wall mounted heated towel rail and tiling to splash back areas.

### **Lounge**

Double glazed window to the front aspect further double glazed patio door to the rear aspect, feature fireplace, wood laminate flooring, coving to ceiling and radiator.

### **Dining Room**

Double glazed window to the rear aspect, wood laminate flooring, coving to ceiling and radiator.

### **Study**

Double glazed window to the front aspect, coving to ceiling and radiator.

### **Kitchen**

Kitchen comprising stainless drainer, stainless steel sink unit in set to worksurfaces, wall and base units, plumbing for washing machine and dish washer, built in range cooker, wall mounted extractor fan, tiling to splash back areas, double glazed window and door to the rear aspect.

### **First Floor Landing**

Hatch to loft space, built in storage cupboard, wood laminate flooring and doors leading to all rooms and shower room.

### **Bedroom One**

Skylight window to front and rear aspect, built in range of eave storage cupboards, hatch to loft space, restricted head height and radiator.

### **Bedroom Two**

Two double glazed window to the front aspect and radiator.

### **Bedroom Three**

Double glazed window to the rear aspect, wood laminate flooring and radiator.

### **Bedroom Four**

Double glazed window to the rear aspect, wood laminate flooring and radiator.

### **Shower Room**

Skylight, suite built in double shower, vanity wash hand basin, low level WC, wall mounted heated towel rail and tiling to splash back areas.

### **Bedroom Five**

Skylight to front aspect, eave storage cupboard, restricted height and radiator.



## Externally

### Front

Open plan and laid to lawn.

### Rear Garden

Enclosed, laid to lawn, mature shrubs, raised decked patio with pagola, side pedestrian access and paved patio.

### Garage

Up and over door to the front aspect, rear pedestrian access door, eve storage space, wall mounted boiler, light and power connected.



**check out more properties at** [williamhbrown.co.uk](http://williamhbrown.co.uk)



welcome to

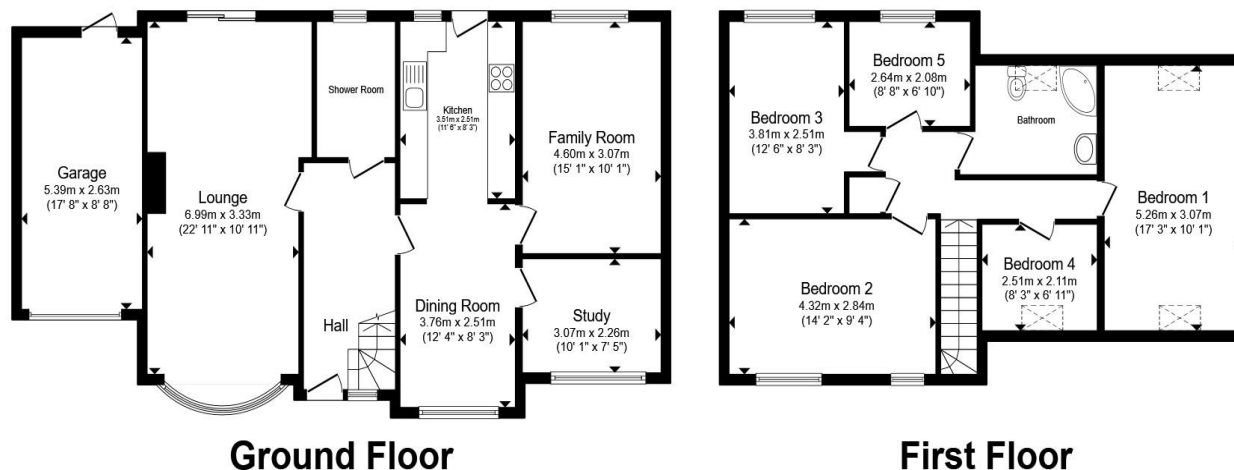
## Dene Close, Wellingborough

- Detached family home
- Well presented
- 5 bedroom, en-suite to master
- Cul-de-sac position and corner plot
- Viewing recommended

Tenure: Freehold EPC Rating: Awaited

Council Tax Band: D

**£450,000**



Total floor area 164.3 m<sup>2</sup> (1,768 sq.ft.) approx

This floor plan is for illustrative purposes only. It is not drawn to scale. Any measurements, floor areas (including any total floor area), openings and orientation are approximate. No details are guaranteed, they cannot be relied upon for any purpose and they do not form part of any agreement. No liability is taken for any error, omission or misstatement. A party must rely upon its own inspection(s). Powered by [www.propertybox.io](http://www.propertybox.io)



check out more properties at [williamhbrown.co.uk](http://williamhbrown.co.uk)



Property Ref:  
WBR114313 - 0003

1. MONEY LAUNDERING REGULATIONS Intending purchasers will be asked to produce identification documentation at a later stage and we would ask for your co-operation in order that there is no delay in agreeing the sale. 2. These particulars do not constitute part or all of an offer or contract. 3. The measurements indicated are supplied for guidance only and as such must be considered incorrect. Potential buyers are advised to recheck measurements before committing to any expense. 4. We have not tested any apparatus, equipment, fixtures or services and it is in the buyers interest to check the working condition of any appliances. 5. Where an EPC, or a Home Report (Scotland only) is held for this property, it is available for inspection at the branch by appointment. If you require a printed version of a Home Report, you will need to pay a reasonable production charge reflecting printing and other costs. 6. We are not able to offer an opinion either written or verbal on the content of these reports and this must be obtained from your legal representative. 7. Whilst we take care in preparing these reports, a buyer should ensure that his/her legal representative confirms as soon as possible all matters relating to title including the extent and boundaries of the property and other important matters before exchange of contracts.

William H Brown is a trading name of Sequence (UK) Limited which is registered in England and Wales under company number 4268443, Registered Office is Cumbria House, 16-20 Hockliffe Street, Leighton Buzzard, Bedfordshire, LU7 1GN. VAT Registration Number is 500 2481 05.

**Not for marketing purposes INTERNAL USE ONLY**



**01933 276622**



[wellingborough@williamhbrown.co.uk](mailto:wellingborough@williamhbrown.co.uk)



5 Sheep Street, WELLINGBOROUGH,  
Northamptonshire, NN8 1BL



[williamhbrown.co.uk](http://williamhbrown.co.uk)