



# Foxendale Square

Ecton Brook, Northampton

oriordanbond  
SALES & LETTINGS



## Foxendale Square

Ecton Brook

NN3 5AA

OFFERS OVER £220,000

An exceptionally well presented three double bedroom terraced home situated in this popular location within Ecton Brook. The property is offered to the market in outstanding condition and is within close walking distance to the local primary school, shops, doctors, pharmacy and restaurants.

This home must be viewed to be appreciated with accommodation comprising entrance hall, re-fitted cloakroom/utility, re-fitted kitchen and a large sitting/dining room with French doors opening out to the rear garden. The first floor provides three fantastic size bedrooms and a re-fitted family shower room. Outside are front and rear low maintenance gardens and nearby communal parking. Further benefits include gas radiator heating and uPVC double glazing. (A/1047/M)

### Additional information

- Council Tax Band: A
- Energy Efficiency Rating: C

### Viewing

Viewing strictly by appointment – details below

### Disclaimer

O'Riordan Bond Estate Agents Limited has not tested apparatus, equipment, fittings or services and so cannot verify they are in working order. The buyer is advised to obtain verification from their solicitor or surveyor.

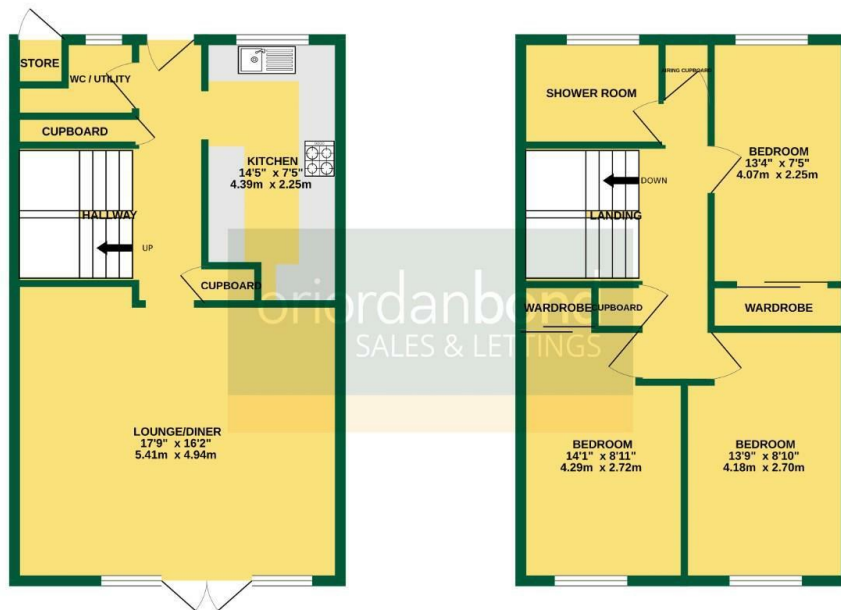
O'Riordan Bond Weston Favell Sales  
01604 784007

westonfavell@oriordanbond.co.uk



GROUND FLOOR  
524 sq.ft. (48.6 sq.m.) approx.

1ST FLOOR  
524 sq.ft. (48.6 sq.m.) approx.



TOTAL FLOOR AREA: 1047 sq.ft. (97.3 sq.m.) approx.

Whilst every attempt has been made to ensure the accuracy of the floorplan contained here, measurements of doors, windows, rooms and any other items are approximate and no responsibility is taken for any error, omission or mis-statement. This plan is for illustrative purposes only and should be used as such by any prospective purchaser. The services, systems and appliances shown have not been tested and no guarantee as to their operability or efficiency can be given.  
Made with Metapic C2026