

Symonds
& Sampson



Plot 35

Hendra Court, Poundbury, Dorchester, Dorset

Plot 35

Hendra Court

Poundbury

Dorchester

Dorset DT1 3BY

A brand new detached home constructed with brick under a tiled roof with accommodation arranged over two floors comprising of three bedrooms, bathroom, garden, a single garage and parking space.



- Dual aspect living room
- Kitchen/dining room
 - Family bathroom
 - Garage & parking
 - Enclosed garden
- NHBC 10-year Warranty



Guide Price **£435,000**

Freehold

Poundbury Sales
01305 251154
poundbury@symondsandsampson.co.uk



THE PROPERTY

On the ground floor, an entrance hall with useful downstairs cloakroom and understairs storage cupboard, leads into a dual aspect front sitting room. The open plan kitchen/dining room will be fitted with attractive wall and floor cupboards with worksurfaces over. There will be a range of integrated appliances, and double doors to the garden. On the first floor are three bedrooms and a contemporary fitted bathroom suite, airing cupboard and hatch to a loft space.

Externally, shrub and flower borders to the front. A timber gate to the side with access to the enclosed lawned garden with a paved area. Garage to the side with a parking space.

The property will include a NHBC 10-year warranty and benefits from a gas fired central heating system.

Please Note:

Images include virtually staged furniture for illustrative purposes only. Please note that any wardrobes or shelving shown are not fitted.

SITUATION

Poundbury is an urban extension to the Dorset county town of Dorchester, designed in accordance with the principles of architecture and urban planning as advocated by His Majesty, King Charles III. Offering all the essential

amenities including a large Waitrose, plenty of parking, and a delightful pub and restaurant. The coach house is well situated to enjoy all of Poundbury's amenities.

Poundbury is also within easy reach of the scenic Dorset countryside and Dorchester town centre is just 1 mile away. The development is built on land owned by the Duchy of Cornwall and features a selection of well thought-out and beautiful houses with unique and charming features.

DIRECTIONS

The property postcode is DT1 3LB, awaiting registry through HM Land Registry. Found just off Great Cranford Street by Dunabridge Square.

SERVICES

Electricity, gas, water and mains drainage. Gas fired central heating.

Local Authority

Dorset Council Tel: 01305 251010

MATERIAL INFORMATION

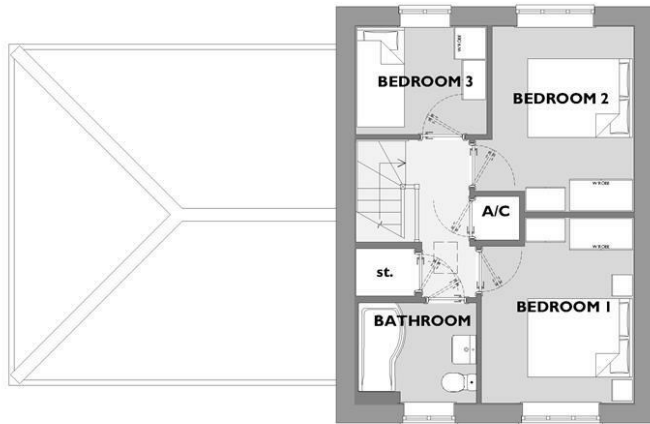
Council tax band: TBC

EPC: Predictive Assessment: B

Tenure

Freehold





FIRST FLOOR

PLOT 35

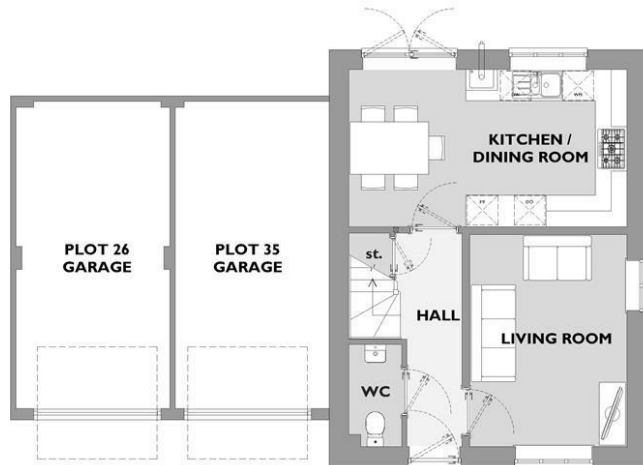
THREE BEDROOM HOME

FIRST FLOOR

Bedroom 1
2.90 x 3.55m (9'6 x 11'8ft max)
(Dimensions including recess)

Bedroom 2
2.70 x 3.54m (8'10 x 11'8ft max)
(Dimensions excluding door recess)

Bedroom 3
2.50 x 2.06m (8'2 x 6'9ft)



GROUND FLOOR

GROUND FLOOR

Living Room
2.99 x 4.04m (9'10 x 13'3 ft max)

Kitchen / Dining Room
5.30m x 3.00 m (17'5 x 9'10 ft max)

Energy Efficiency Rating		
	Current	Potential
Very energy efficient - lower running costs		
(92 plus) A		
(81-91) B	83	83
(69-80) C		
(55-68) D		
(39-54) E		
(21-38) F		
(1-20) G		
Not energy efficient - higher running costs		
England & Wales	EU Directive 2002/91/EC	



Poundbury/pgs/29.5.26



01305 251154

poundbury@symondsandsampson.co.uk
Symonds & Sampson LLP
Arch Point House, 7 Queen Mother Square,
Poundbury, Dorset DT1 3BY



Important Notice: Symonds & Sampson LLP and their clients give notice that they have no authority to make or give any representations or warranties regarding the property. These particulars do not form part of any offer or contract and must not be relied upon as statements of fact. Some descriptions and images may have been AI-assisted; while reviewed for accuracy, interested parties should verify key details through inspection or by contacting our agents. All measurements and distances are approximate. Text, photographs, and plans are for guidance only and may not be comprehensive. It should not be assumed that the property has all necessary planning or regulatory consents, and no services, equipment, or facilities have been tested. No investigations have been made into pollution or contamination; purchasers must make their own enquiries. The property is sold subject to all existing wayleaves, easements, and rights of way (public or private), whether mentioned or not. Vendors are not required to define such rights.