



Tawny Close, W13

£575,000

A fantastic family home situated in this quaint location, offering two double bedrooms, a bathroom, and a separate WC. There is huge potential to extend (STPP), as many neighbouring houses have done. Attractively offered to the market with no onward chain and allocated parking.

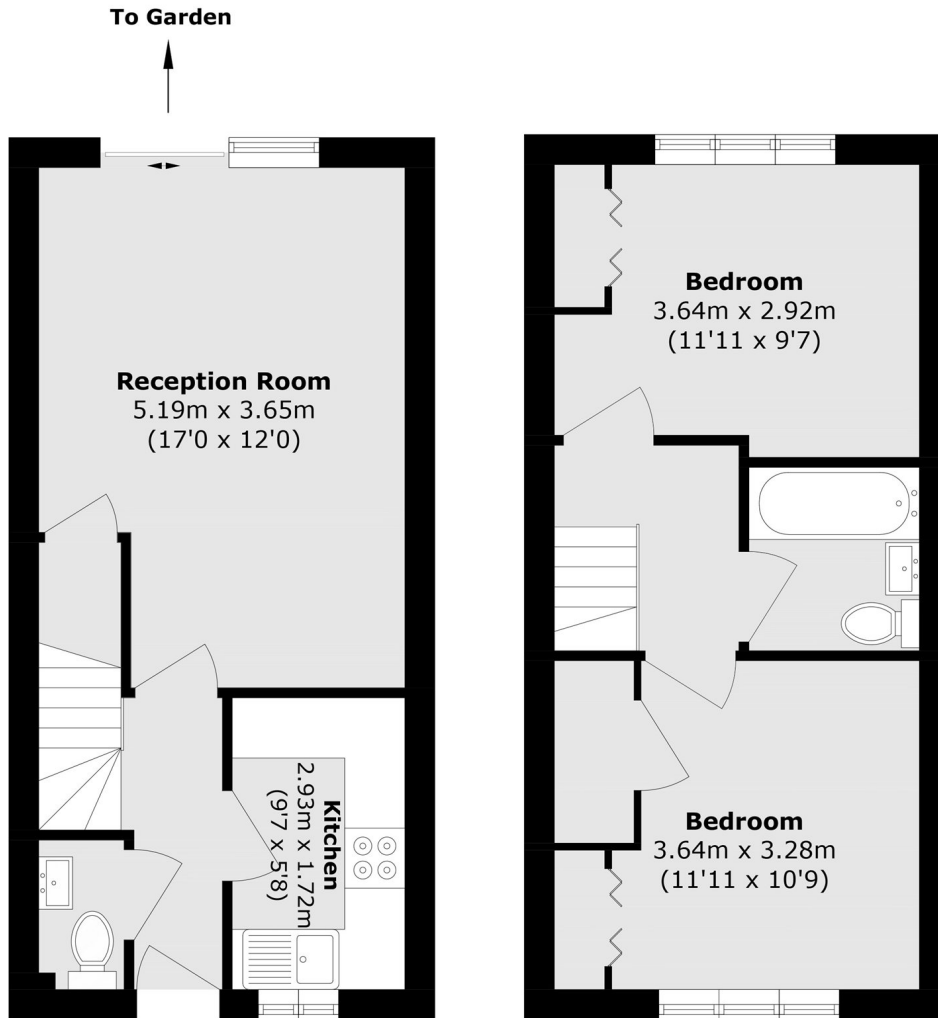


A wonderful family home featuring a ground-floor kitchen, WC, and reception room leading to a large, secluded garden. The first-floor accommodation offers two double bedrooms and a family bathroom.

Ideally located for excellent transport links, including Northfields station (Piccadilly Line) and West Ealing station (Elizabeth Line), providing unrivalled access across London. Local parks nearby include Lammas Park, Walpole Park, and Elthorne Park.

- No Onward Chain • Excellent Transport Links • Local Parks •
- Two Bed House • Well Regarded Schools • Potential to Extend (STPP) •





Ground Floor

First Floor

Total area (approx.): 59.8 sq. m (643.6 sq. ft)

Robertson Smith & Kempson Northfields Sales
116 Northfield Avenue,
London, W13 9RT
020 8566 2340
northfieldssales@robertsonsmithandkempson.co.uk

Energy Rating: D. We aim to make our particulars both accurate and reliable. However they are not guaranteed; nor do they form part of an offer or contract. If you require clarification on any points then please contact us, especially if you're traveling some distance to view. Please note that appliances and heating systems have not been tested and therefore no warranties can be given as to their good working order.