

Wilkinson Close, NW2

£400,000

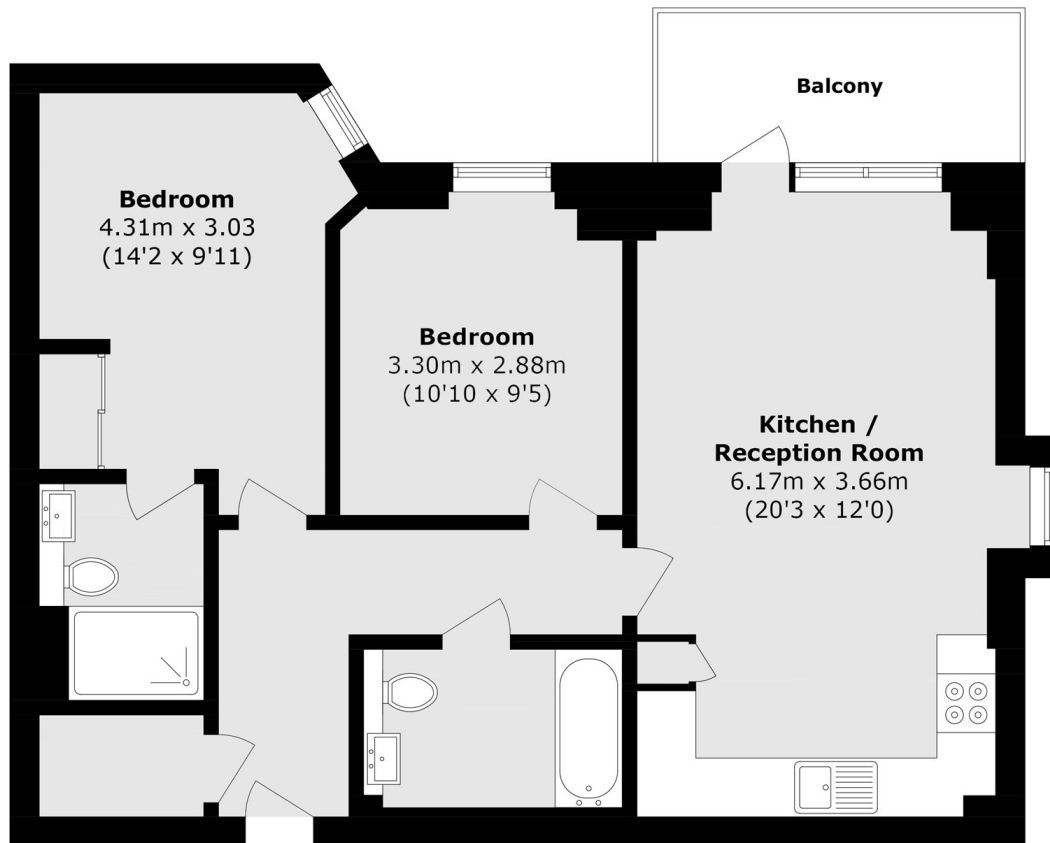
Located within a modern development, this flat offers over 750 sq ft of living space with two double bedrooms, two bathrooms (one of which is an en suite) and a winter garden accessed via the open plan living room kitchen. The development also has a residential gym and the property is being offered chain free.

Collins Building is within the Fellows Square development and is a short distance from the new Brent Cross West station (Thameslink), Brent Cross Shopping Centre and multiple road connections (A406, A41, M1).

Features

- Two Bedrooms
- Two Bathrooms
- Open Plan Living & Kitchen
- Winter Balcony
- Communal Gardens
- Allocated Parking

Wilkinson Close, London, NW2



Total area (approx.): 70.6 sq. m (759.9 sq. ft)

Balcony area (approx.): 5.6 sq. m (60.2 sq. ft)