



## Crescent Road, KT2

£365,000

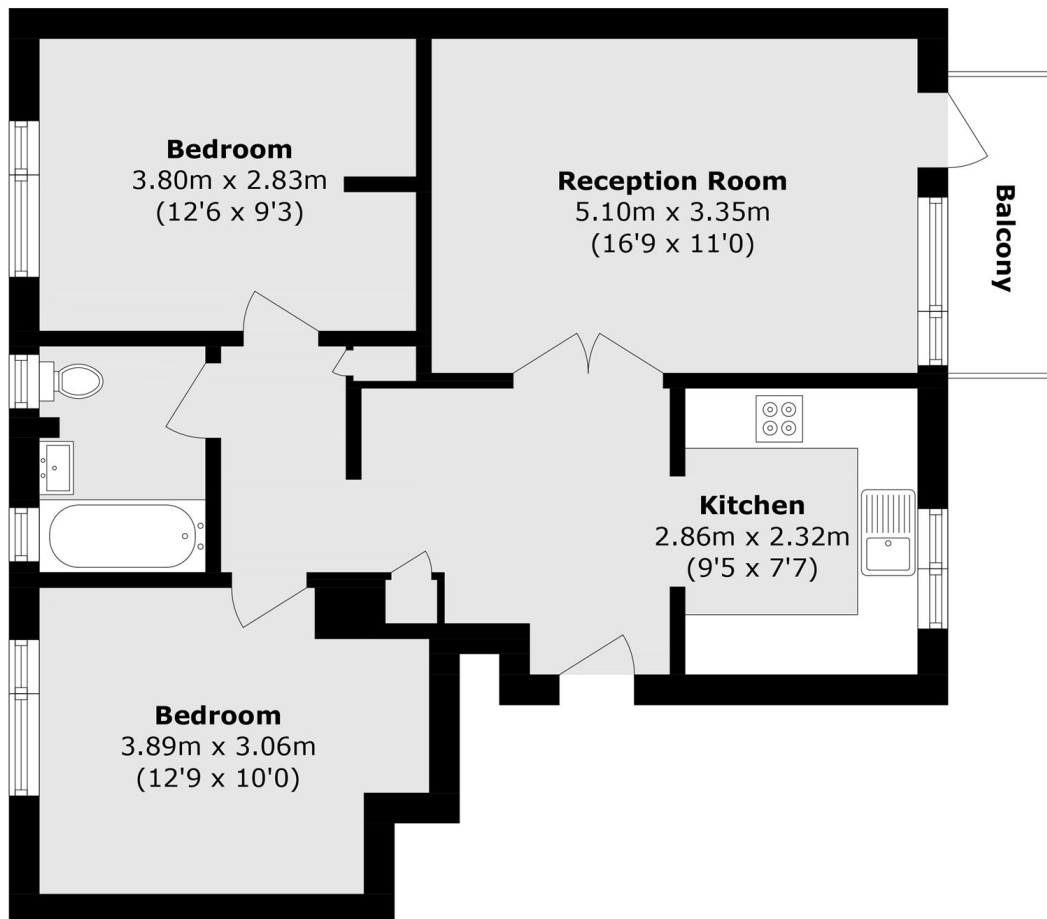
A beautifully presented, light-filled and spacious two double bedroom apartment situated on the top floor of this sought-after development on Crescent Road in Kingston. The property offers well-balanced and generously proportioned accommodation throughout, featuring a bright living space, a private balcony and excellent built-in storage. Further benefits include a private storage unit located within the communal gardens, providing valuable additional space.

Hillside Court is a lovely, low rise development just off Crescent Road and just over 500 yards to the gates of Richmond Park. Norbiton Station and local facilities are approximately half a mile away and the vibrant Kingston town centre 1 mile away.

### Features

- Two Double Bedrooms
- Top Floor
- Private Balcony
- External Storage Room
- Sought After Location
- Residents Permit Parking

# Crescent Road, Kingston Upon Thames, KT2



Total area (approx): 62.9 sq. m (677.0 sq. ft)  
Balcony area (approx): 3.1 sq. m (33.3 sq. ft)