



Guide Price
£265,000

Freehold

2x  1x  1x 

**Dolcroft Road, Rookley,
Ventnor, Isle of Wight,
PO38**

OVER 60?

Secure this property
for up to **59% less!**

Pittis 
Helping you move forwards



Main features

- Link detached bungalow in a peaceful village location
- Garage and Driveway
- Solar panels and air source heat pump
- Beautifully presented with a newly fitted kitchen
- Generous, easily maintained garden

Accommodation

GROUND FLOOR

Hall

Lounge / Dining Room: 14'11 x 11'10
(4.55m x 3.61m)

Kitchen: 10'10 x 8'11 (3.30m x 2.72m)

Bathroom

Bedroom 2: 11'9 x 8'11 (3.58m x 2.72m)

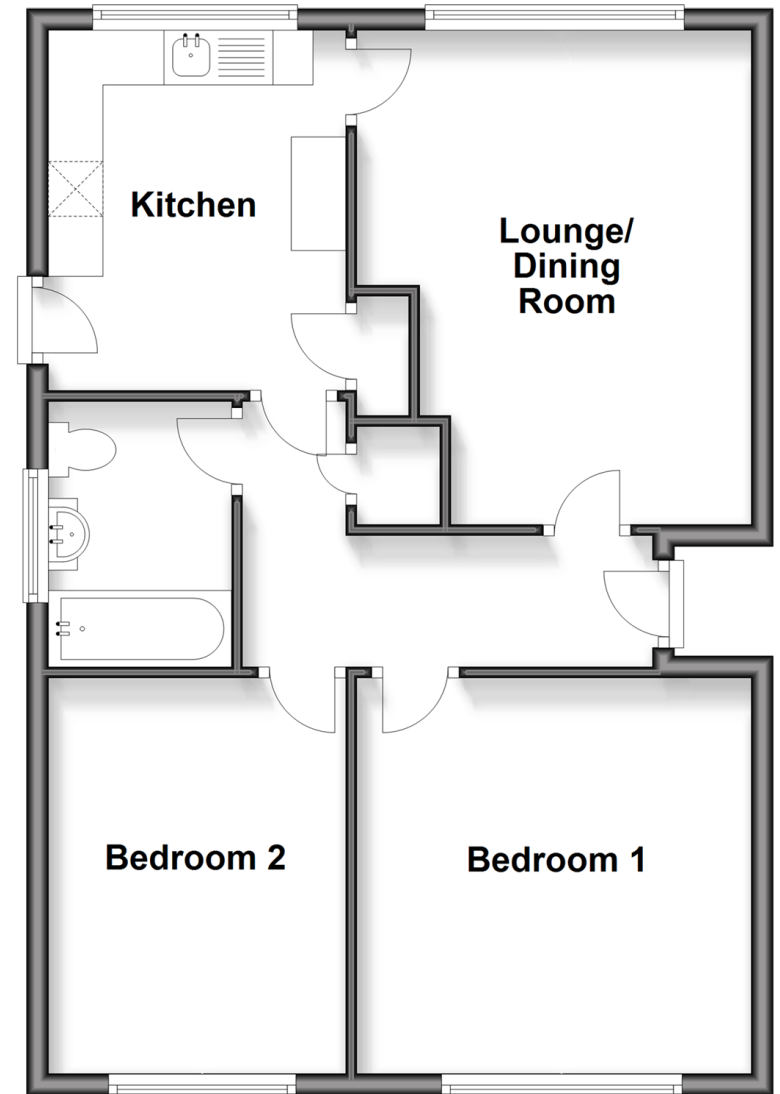
Bedroom 1: 11'10 x 11'9 (3.61m x 3.58m)

OUTSIDE

Front Garden
Driveway
Garage
Rear Garden

Ground Floor

Approx. 60.3 sq. metres (649.6 sq. feet)



Call Newport - 01983 528888 ■ pittis.co.uk

■ Through a Homewise Home For Life Plan people aged 60+ can secure this property for up to 59% less, by purchasing a Lifetime Lease



60322537/20260330/SC/TB