



Swn y Môr

Development Plan

House Types

- The Cefly
 - The Eston
 - The Odford
 - The Herley
 - The Kingley
 - The Wentworth Lifestyle
 - The Wentworth
 - The Wentworth
 - The Wiltshire
- Variations**
- R Rental Variant
 - * Affordable Housing



The development layout is indicative only, showing the intended layout and suggested house mix at the time of publication. The location of affordable homes, landscaping, and other features may change. Open market properties may be added to a variety of plots.

Castle Green

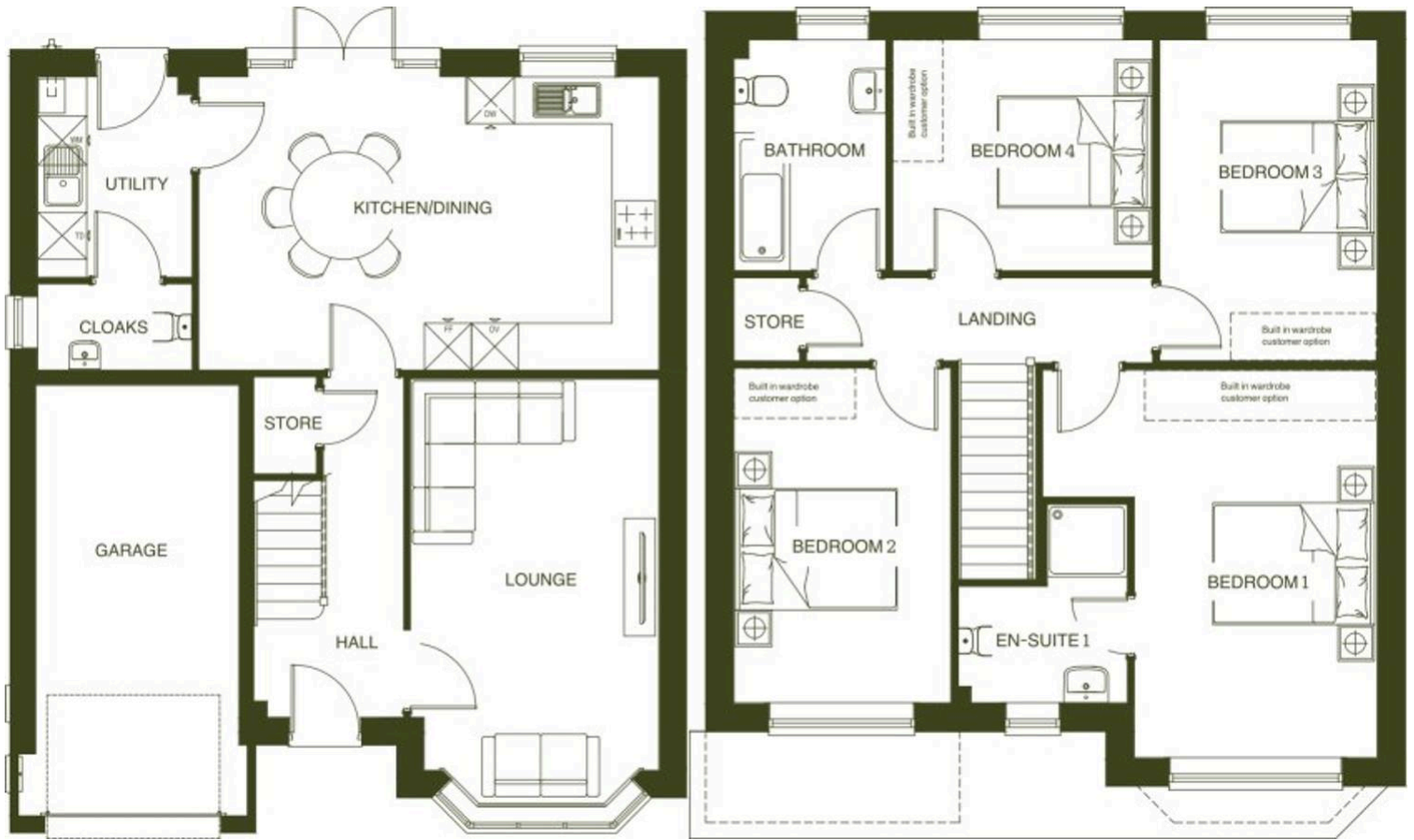


Plot 42 – Wentworth, Gronant Road, Prestatyn – LL19 9HP

£409,995

Introducing the Wentworth, a rare opportunity to secure a stunning four bedroom thoughtfully designed detached residence in a highly desirable area, where refined living meets exceptional convenience. Complete with premium quartz worktops, flooring throughout and lawned gardens to the rear. This newly built, energy-efficient home is part of the exclusive Swn y Môr development by Castle Green, an established and well-known developer celebrated for quality design and attention to detail which Williams Estates are proud to be working alongside.

Prices range from £249,995 – £499,995.



BRITISH
PROPERTY
AWARDS

2025



GOLD WINNER

ESTATE AGENT
IN FLINTSHIRE



BRITISH
PROPERTY
AWARDS

2025



GOLD WINNER

ESTATE AGENT
IN DENBIGHSHIRE

YOUR FREE PROPERTY REPORT



WE OFFER FREE ADVICE

MORTGAGES - SURVEYS - SOLICITORS

