



BEAUFORT GREEN



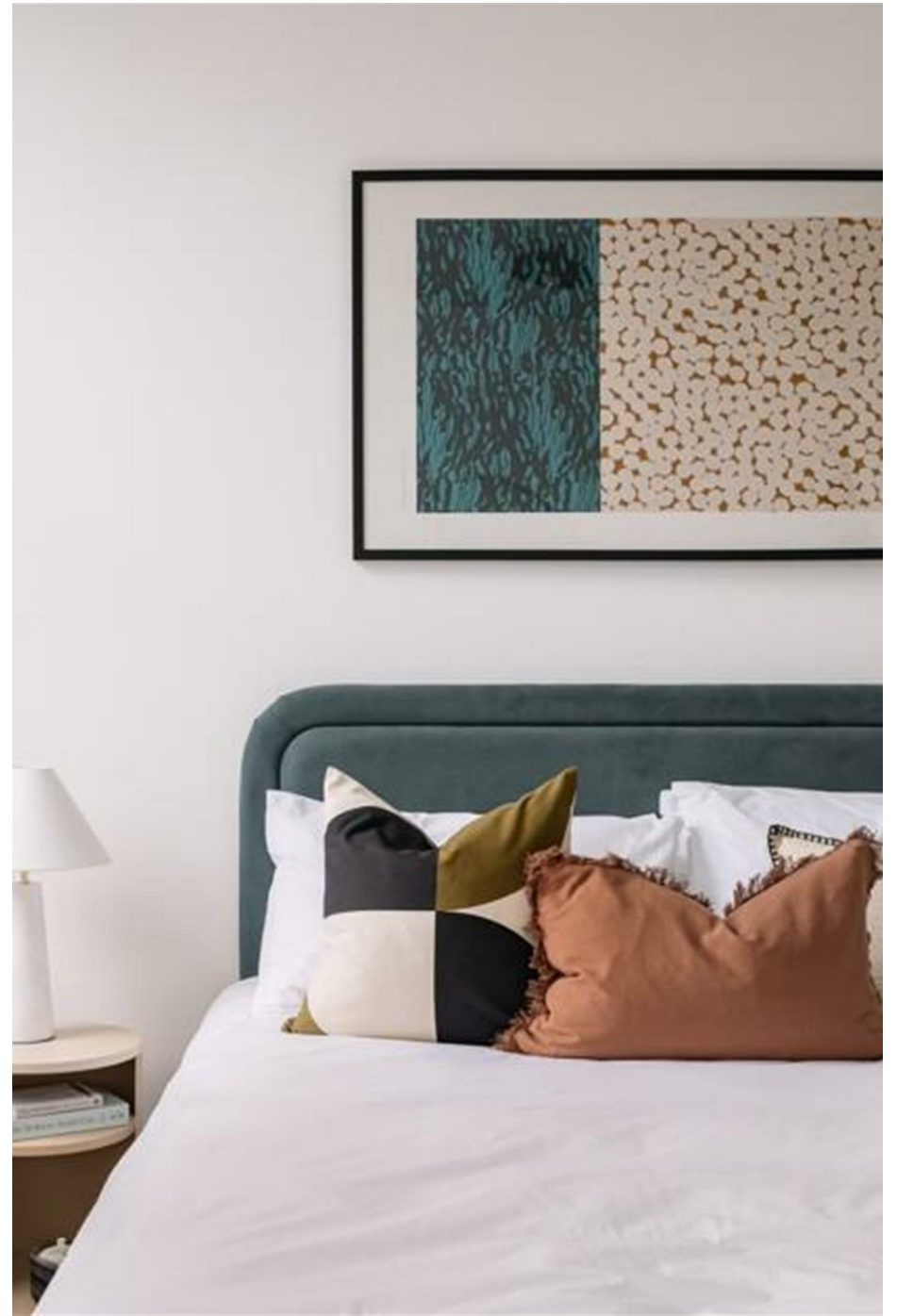
Warwick Road, SW5

£3,950,000



A brand newly refurbished, income producing building comprising of 7 flats moments away from Earls Court Station.



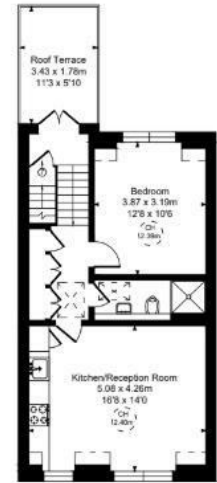
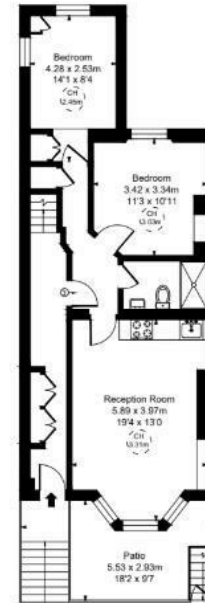


BEAUFORT GREEN



BEAUFORT GREEN

Warwick Road, SWS
 Approximate Gross Internal Area
 335.60 sq m / 3612 sq ft
 (Excluding mechanical shafts
 under 1.5m (5ft) in height)
 (CH = Ceiling Heights)



At a Glance.

BEAUFORT GREEN

02074594100

charlie@beaufortgreen.co.uk

263 New Kings Road
London
SW16 1DB