



Pavilion Terrace, W12

£750,000

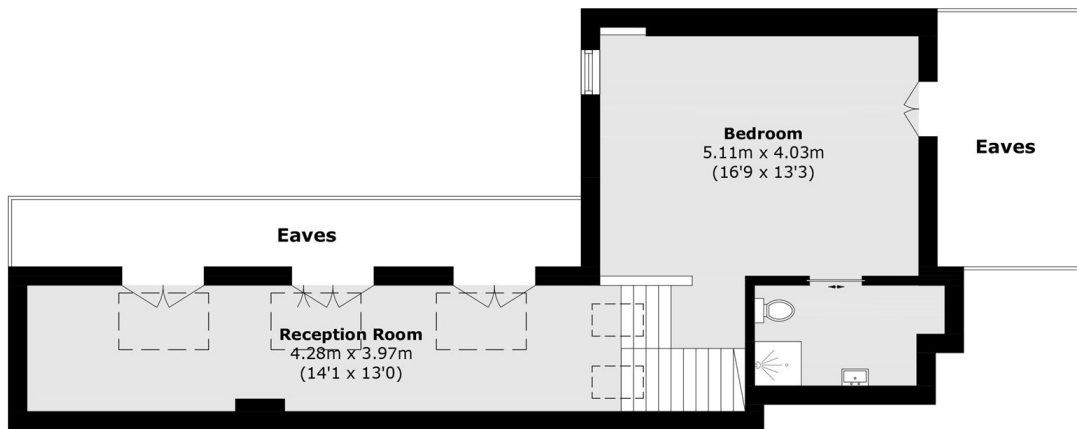
This beautifully presented split-level Edwardian maisonette with bright and flexible living space, accessed via its own private entrance. The accommodation includes two double bedrooms, two bathrooms (one en-suite), a stylish reception room, a generous kitchen/dining room, and an additional two rooms suitable as a study, den or yoga space.

Pavilion Terrace is located in close proximity to Notting Hill. It is moments away from the historic Television Centre, White City House and the abundance of shops and amenities in Westfield Shopping Centre as well as the bars and restaurants on Portobello Road. There are fantastic transport links with easy access into central London, the West End and The City.

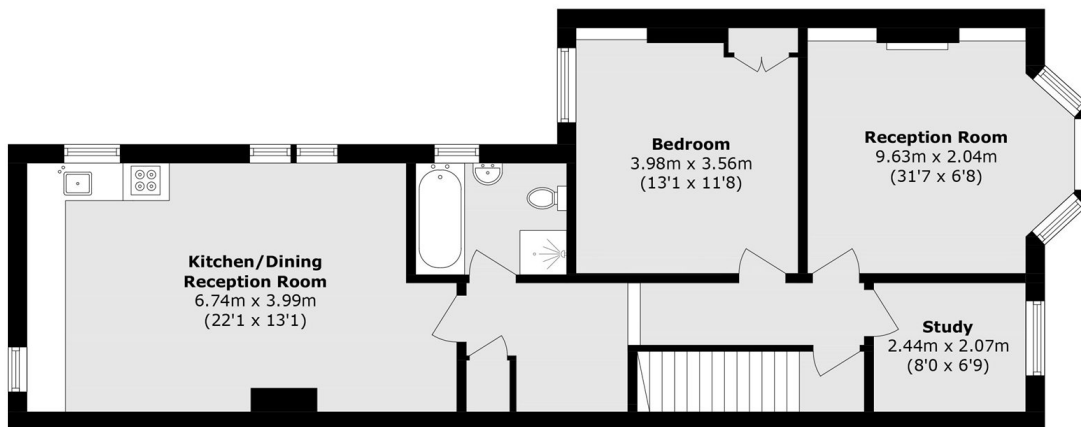
Features

- No Onward Chain
- Two Double Bedrooms
- Two Bathrooms
- Study
- Den/ Yoga Space
- Westfields Shopping Centre

Pavilion Terrace, London, W12



Second Floor



First Floor



Ground Floor

Total area (approx.): 138.1 sq. m (1486.5 sq. ft)

(Excluding Eaves)