



Cottenham Park Road, SW20

£529,500

Flat 4 Holland Court - A one double bedroom apartment with a private balcony, en-suite bathroom and bespoke built-in wardrobe. There is a high specification throughout, including underfloor heating, German appliances and energy-efficient windows and doors. The energy efficiency rating is B, meaning low running costs in both Summer & Winter.

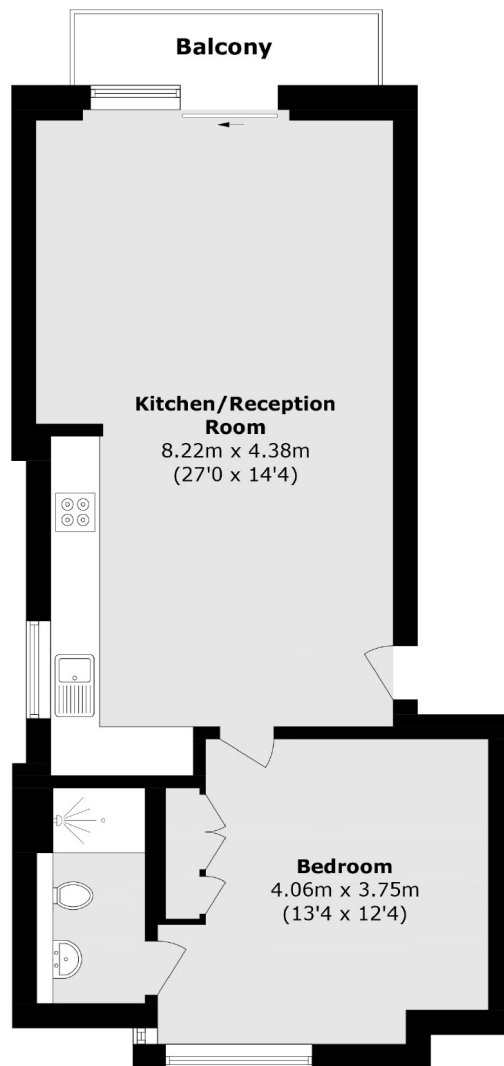
** Please Note - Some photography has been used from the show apartment within the same development **

Located on the edge of Wimbledon Village, within close proximity to Wimbledon Common and exceptional schools. Wimbledon Village has a host of boutique shops, delicious restaurants and a vibrant coffee culture. The green open spaces of Cannizaro Park are just around the corner with a range of attractions including a sunken garden, water garden, Mediterranean garden and rose garden.

Features

- Share Of The Freehold
- One Double Bedroom
- Private South-Facing Balcony
- Bespoke Built Wardrobe
- Underfloor Heating
- Walk To Wimbledon Village
- 999 Year Lease
- EPC Rating B

Cottenham Park Road, Wimbledon, SW20



First Floor

Total area (approx.): 52.6 sq. m (566.1 sq. ft)
Balcony area (approx.): 3.2 sq. m (34.4 sq. ft)