

Beresford Avenue, Rochester, ME1 2QX

Guide Price £350,000

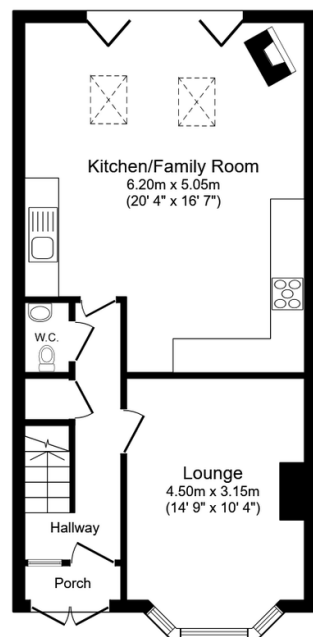
3 1 2



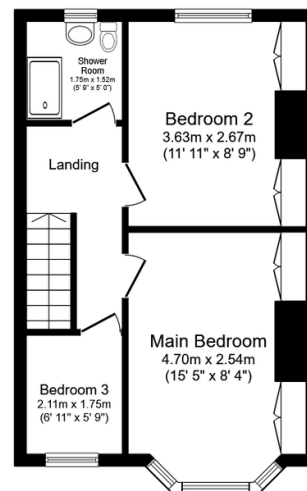
CALL TO BOOK YOUR VIEWING. Guide Price £350,000-£375,000. A great home located near sought after primary school and easy access to motorway links. Host in the stunning kitchen dining room with bi-folding doors or retreat to the outbuilding currently used as a bar. QUOTE AP0490

Key Features

- 3 Bedroom End Of Terrace Home
- Stunning Kitchen Dining Room With Bi-folds & Log Burner
- Cloakroom
- Driveway For Two Vehicles
- Fully Tiled Shower Room
- Outbuilding Used As A Bar
- Near To High Performing Schools
- South Facing Garden
- Tenure Freehold / Council Tax Band C
- QUOTE AP0490



Ground Floor
Floor area 51.6 sq.m. (555 sq.ft.)



First Floor
Floor area 38.9 sq.m. (418 sq.ft.)

Total floor area: 90.4 sq.m. (973 sq.ft.)

This floor plan is for illustrative purposes only. It is not drawn to scale. Any measurements, floor areas (including any total floor area), openings and orientations are approximate. No details are guaranteed, they cannot be relied upon for any purpose and do not form any part of any agreement. No liability is taken for any error, omission or misstatement. A party must rely upon its own inspection(s). Powered by www.Propertybox.io