



Connells

Foscote Rise
Banbury



Property Description

Connells are delighted to offer for sale this four bedroom link-detached home located in the sought after area of Foscote Rise.

On entering the property you have an entrance hall with stairs rising to the first floor. Access to ground floor rooms with a lounge to the front aspect. Kitchen to the rear over looking the garden and

To the First Floor three bedrooms and family Bathroom. The main bedroom is from a loft conversion and benefits from an en-suite.

Cloakroom

Lounge

16' 1" x 12' (4.90m x 3.66m)

Double glazed window to front aspect. Wood laminated flooring.

Kitchen/Dining

18' 5" x 9' (5.61m x 2.74m)

Double glazed window to rear aspect. Wall and base fitted kitchen. Sink with drainer. Plumbing space for washing machine. Patio doors leading to rear garden..

First Floor

Bedroom 2

12' 5" max x 10' 11" (3.78m max x 3.33m)

Double glazed window to rear aspect. Wood laminated flooring.

Bedroom 3

10' 1" max x 9' 10" (3.07m max x 3.00m)

Double glazed window to front aspect. Radiator

Bedroom 4

9' x 7' (2.74m x 2.13m)

Wood laminated flooring. Double glazed window to front aspect.

Bathroom

Double glazed window to front aspect. Wash hand basin. Free standing Bath and Shower cubicle.

Second Floor

Bedroom 1

15' 4" max x 15' 1" (4.67m max x 4.60m)

En-Suite

Double glazed window to side aspect. A modern bathroom suite with free standing bath with mixer taps, low level wc and wash hand basin.

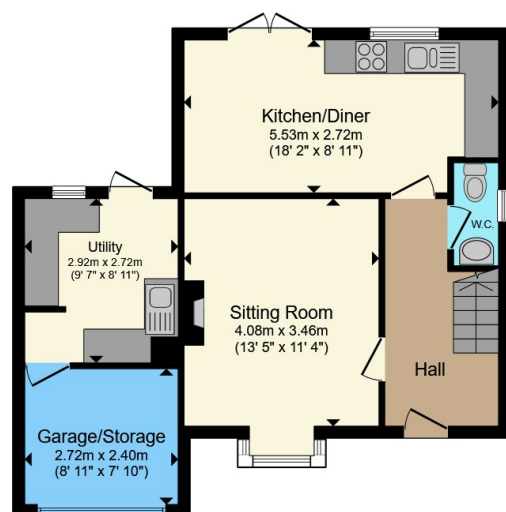
Off Road Parking To The Front

Off road parking to the front of the property for three cars. The Garage has been partitioned off to offer an additional room and storage.

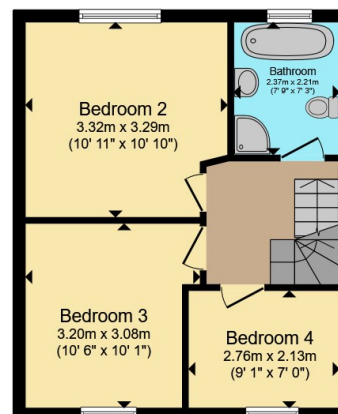




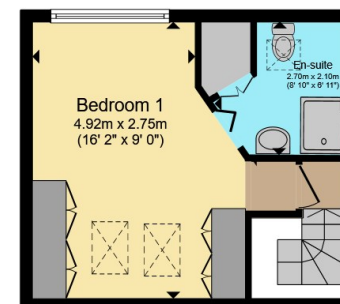




Ground Floor



First Floor



Second Floor

Total floor area 119.9 m² (1,290 sq.ft.) approx

This floor plan is for illustrative purposes only. It is not drawn to scale. Any measurements, floor areas (including any total floor area), openings and orientation are approximate. No details are guaranteed, they cannot be relied upon for any purpose and they do not form part of any agreement. No liability is taken for any error, omission or misstatement. A party must rely upon its own inspection(s). Powered by www.propertybox.io

Connells

To view this property please contact Connells on

T 01295 268 101
E banbury@connells.co.uk

33 Bridge Street
BANBURY OX16 5PN

EPC Rating: C Council Tax
Band: D

Tenure: Freehold

view this property online connells.co.uk/Property/BAN309830



1. MONEY LAUNDERING REGULATIONS Intending purchasers will be asked to produce identification documentation at a later stage and we would ask for your co-operation in order that there will be no delay in agreeing the sale. 2. These particulars do not constitute part or all of an offer or contract. 3. The measurements indicated are supplied for guidance only and as such must be considered incorrect. Potential buyers are advised to recheck measurements before committing to any expense. 4. We have not tested any apparatus, equipment, fixtures, fittings or services and it is in the buyers interest to check the working condition of any appliances.

Connells Residential is registered in England and Wales under company number 1489613, Registered Office is Cumbria House, 16-20 Hockliffe Street, Leighton Buzzard, Bedfordshire, LU7 1GN. VAT Registration Number is 500 2481 05.

See all our properties at www.connells.co.uk | www.rightmove.co.uk | www.zoopla.co.uk

Property Ref: BAN309830 - 0002