



3  1  1 

Deveron Walk, Corby

£190,000 Freehold

BELVOIR!



Nestled down a quiet walk is this spacious three bedroom residence within close proximity of local amenities & leisure facilities including the Corby Tennis Centre & Corby Town Football Club.

The ground floor provides a bright & airy lounge/diner with sliding door into garden with a fitted kitchen providing ample storage & work surfaces perfect for any keen cook.

Three well proportioned bedrooms are located on the first floor with two being double in size & complemented by a modern fully tiled bathroom with waterfall & telephone shower attachments.

Externally you will find a walled garden which is laid to lawn with a private rear garden with patio & laid lawn.

Viewing is advised to fully appreciate the accommodation this home has to offer.

EPC Rating C. Council Tax A.

Entrance Porch

1.96m x 1.83m (6.4ft x 6ft)

Double glazed door to front, double glazed window to front and side, laminate to flooring, radiator.

Lounge/Diner

6.33m x 3.36m (20.8ft x 11ft)

Double glazed window to front, double glazed sliding doors to rear, carpet to flooring, radiator.

Kitchen

6.34m x 3.4m (20.8ft x 11.2ft)

Double glazed window to rear, kitchen comprising of wall and base units, work surfaces over, electric oven, induction four ring hob, cooker hood over, space for washing machine, space for dishwasher, space for fridge/freezer, laminate to flooring.





First Floor Landing

Carpet to flooring, loft access, airing cupboard.

Bedroom One

3.46m x 3.33m (11.4ft x 10.9ft)

Double glazed window to front, carpet to flooring, radiator, built in wardrobe.

Bedroom Two

3.39m x 2.89m (11.1ft x 9.5ft)

Double glazed window to rear, carpet to flooring, radiator.

Bedroom Three

3.45m x 2.16m (11.3ft x 7.1ft)

Double glazed window to rear, carpet to flooring, radiator.

Bathroom

2.87m x 1.67m (9.4ft x 5.5ft)

Double glazed window to rear, panelled bath, waterfall tap, mains shower with telephone shower attachment and waterfall shower attachment, concealed cistern WC, wall mounted wash hand basin, wall mounted mirror with light, heated towel rail, fully tiled.



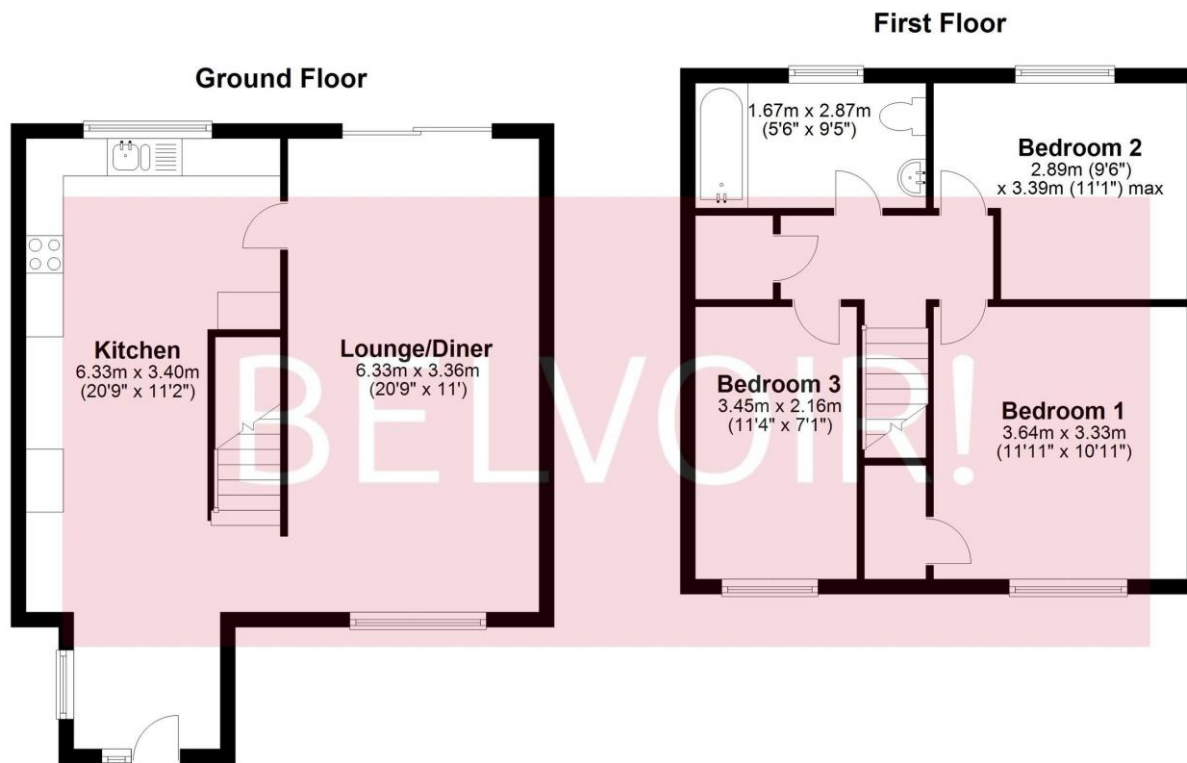
External

Front - Walled frontage, laid to lawn, path leading to front door.

Rear - Mainly laid to lawn, patio, gated access to rear.

Agent Notes

Whilst every care has been taken to prepare these sales particulars, they are for guidance purposes only. All measurements are approximate, are for general guidance purposes only and whilst every care has been taken to ensure their accuracy, they should not be relied upon and potential buyers are advised to recheck the measurements.



We endeavour to make our sales particulars accurate and reliable, however, they do not constitute or form part of an offer or any contract and none is to be relied upon as statements of representation or fact. Any service, system and appliances listed in this specification have not been tested by us and no guarantee as to their operating ability or efficiency is given. All measurements have been taken as a guide to prospective buyers only, and are not precise. If you require clarification or further information on any points, please contact us, especially if you are travelling some distance to view. Fixture and fittings other than those mentioned are to be agreed with the seller by separate negotiation.

Plan produced using PlanUp.

Energy Efficiency Rating		Current	Potential
Very energy efficient - lower running costs:			
(92-100)	A		84
(81-91)	B		
(69-80)	C	72	
(55-68)	D		
(39-54)	E		
(21-38)	F		
(1-20)	G		
Not energy efficient - higher running costs			
England, Scotland & Wales		EU Directive 2002/91/EC	



Contact us today to arrange a viewing...

BELVOIR!

www.belvoir.co.uk

68 George Street, Corby, Northants, NN17 1QE

corby@belvoir.co.uk

01536 261666