



## St. Peters Square, W6

£12,500 Per calendar month

A rare opportunity to rent a four bedroom family home located in one Hammersmith's most prestigious locations, the highly sought after St Peters Square. The house is arranged over four floors and spans 2,500 square ft of space. On the lower ground floor you will find a large kitchen and semi-open plan dining room, utility room, WC and access onto a large mature garden.

The property is located on St Peters Square in Hammersmith, very close to Stamford Brook tube station (District Line) as well as being near to Chiswick High Road, King Street and a short walk to the River Thames.

### Features

- Four Bedrooms
- Three Bathrooms
- 2,500 Square Feet
- Prestigious Location
- Private Garden
- St Peters Square

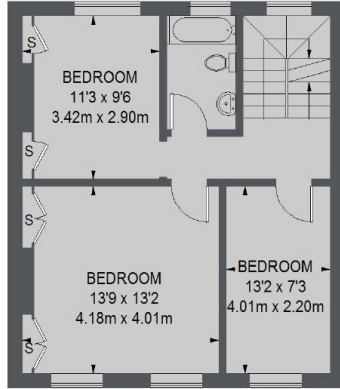


## St. Peters Square, W6

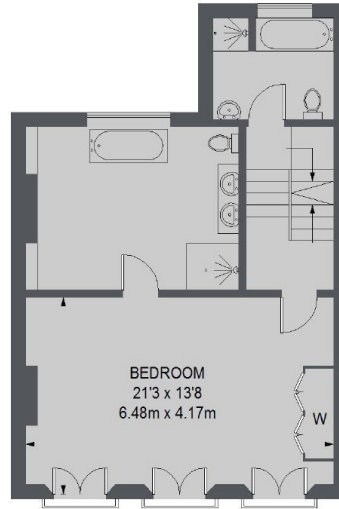
The raised ground floor has a double reception room and study. Upstairs you will find on the first floor a family bathroom, large master bedroom with recently refurbished en-suite bathroom. The top floor consists of three further bedrooms and family bathroom. Many of the period features have been retained including marble fireplaces, cornicing and ironwork.



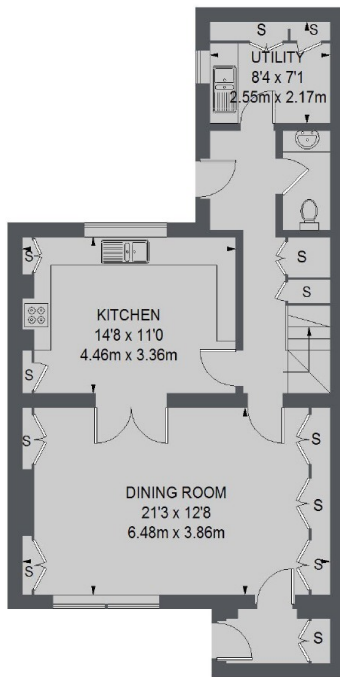
# St. Peters Square, London, W6



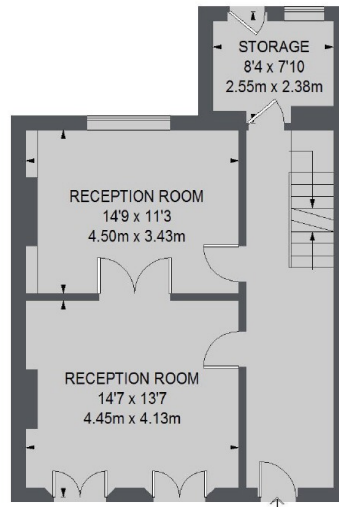
**SECOND FLOOR**



**FIRST FLOOR**



**BASEMENT**



**RAISED GROUND FLOOR**

TOTAL APPROX. FLOOR AREA 2424 SQ. FT. (225.15 SQ. M.)